

# What's *Trending?*

FIND INSPIRATION in the trends that moved us.



*Sleek, Cool Metals*



*Colors of the Year*

## *Recreate* THE CLASSICS

Experience refreshed traditions with our latest roomscape, where modern style meets traditional fabrication details. We've incorporated the trends we love to create showstopping moments everywhere you look.



*Botanicals*

*Curved Details*

*Textured Velvets*



*Artisanal Embellishments*



*Layered Window Treatments*

what's  
trending  
in

# DRAPERY HARDWARE

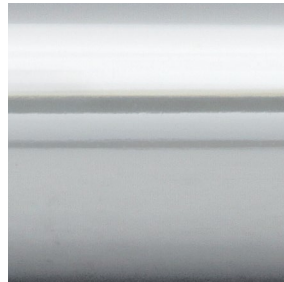


WHAT'S TRENDING  
Sleek,  
Cool  
Metals  
WHAT'S TRENDING



*Our Pick:* CHROME FINISH

With a resurgence of cool silver tones & metals, a highly reflective chrome finish pairs beautifully with most colors, making it a classic trend that's here to stay.



Simple Details

Modern

Chrome

Silver Tones

Atelier  
by  
Aria<sup>®</sup>  
Metal Hardware

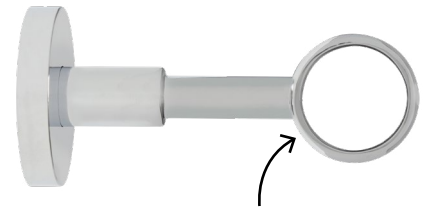


*Our Pick:* TAPERED BALL

A modern twist on a classic ball finial.  
FM600/CH/CH

*Our Pick:* RINGS

Classic rings with eyelets provide the perfect place for drapery pins. All rings include plastic inserts for smoother gliding.  
FM200/CH



*Our Pick:* ORBITAL BRACKETS

Our sleekest bracket offering.  
FM406/CH

*Our Pick:* FIXED POLE

The perfect chrome hardware base for our interchangeable panels.  
FM284/CH



Recreate THE CLASSICS

© 2024 Rowley Company LLC | All rights reserved



what's  
trending  
in

# COLORS



WHAT'S TRENDING  
Moody  
Hues  
WHAT'S TRENDING



*Our Pick:* COLORS OF THE YEAR  
This year's trending colors shine in our roomscape, blending moody vibes and peachy hues. Fabricut's Alice in Wonderland Day Break was the perfect botanical print to bring this colorway to life.



Pantone®: Peach Fuzz

Sherwin Williams®: Upward

Behr®: Cracked Pepper

HGTV Home®: Persimmon

Pantone® 13-1023



PEACH FUZZ

A gentle peach tone that can be soothing while also awakening the senses.

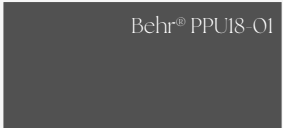
HGTV® Home by Sherwin Williams HGSW6339



PERSIMMON

A warm peach tone that evokes a feeling of renewed comfort.

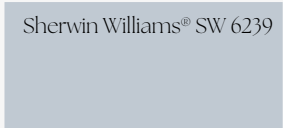
Behr® PPU18-01



CRACKED PEPPER

Elevate your senses with a versatile soft black that accentuates spaces you create life's moments in.

Sherwin Williams® SW 6239



UPWARD

Slow down, take a breath, and allow your mind to clear with a breezy and blissful blue.

*Our Pick:* SETTEE  
Fabricut's Etcetra velvet/grospoint fabric in Daybreak combines the perfect blend of Peach Fuzz and Persimmon.



*Our Pick:* DRAPERIES  
Fabricut's Prose velvet/grospoint fabric in Sunrise introduces the warm coral tone of Persimmon.



*Our Pick:* WALL COLOR  
Moody Cracked Pepper walls create an inviting and modern bedroom.



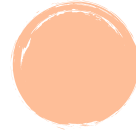
*Our Pick:* BEDSKIRT  
Inspired by Upward, Fabricut's Arashi woven/faux silk fabric in Frost mimics the cool tones of our chrome hardware.



Recreate THE CLASSICS

what's  
trending  
in

# PATTERNS



WHAT'S TRENDING  
Botanicals  
WHAT'S TRENDING



*Our Pick:* NATURE INSPIRED  
Modern florals, stem shapes, and soft natural forms offer a timeless yet stylish touch, blending contemporary looks with classic elegance to create a serene and inviting atmosphere.



Romanticizing the Home

Geometric Botanicals

Simple Stems

Easy Florals

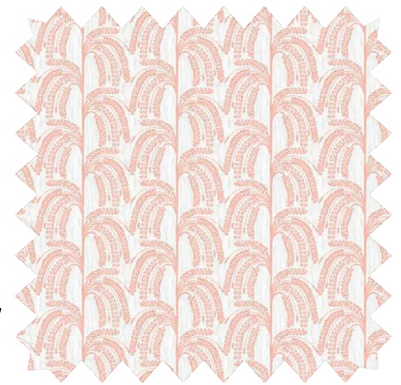
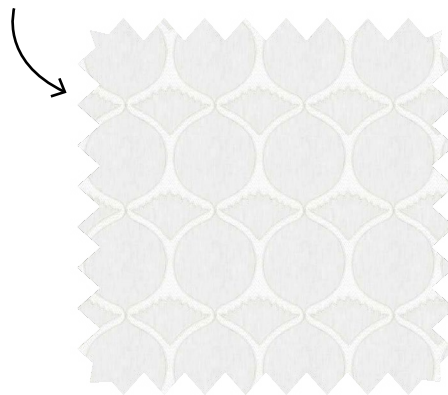


*Our Pick:* ROMAN SHADES  
WITH CORNICE FABRIC

Vivid flowers stand out in Fabricut's Alice in Wonderland in Day Break. To push the modern style further, we've used the same fabric for both layers to add depth while keeping the coordination.

*Our Pick:* BED SHEET & PANEL FABRIC

Fabricut's Hamilton Tulip in Crystal is a botanical inspired geometric design, perfect for a modernized traditional look. This monochromatic fabric adds texture and depth to balance out the other eye-catching hues in the room.



*Our Pick:* PILLOW SHAM FABRIC

Fabricut's Anna Vine in Sunrise features a simple, repeated stem pattern in a soft peach hue. Paired with our white lace scallop trim, this combination creates a standout look. Our R-TEX High Quality Polyester Cluster Pillow Inserts (PJPC272) are ideal for queen size sham inserts.

Recreate THE CLASSICS



what's  
trending  
in

# SHAPES



WHAT'S TRENDING  
Curved  
Details  
WHAT'S TRENDING



### Our Pick: DUVET TRIM

Inspired by the blue tones in the room, Fabricut's Ribbontie Trim in Sky adds a playful, whimsical swirl to our duvet cover, providing a perfect accent and a touch of fun. Our Light, Queen Duvet Insert (DUPC63) provided the perfect fill and clean lines.

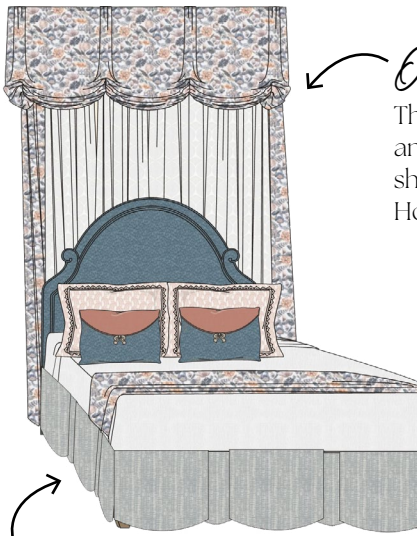


Waves in Motion

Scallop Details

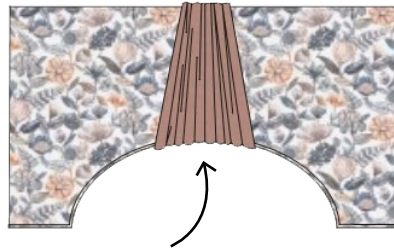
Curves in Focus

Arches



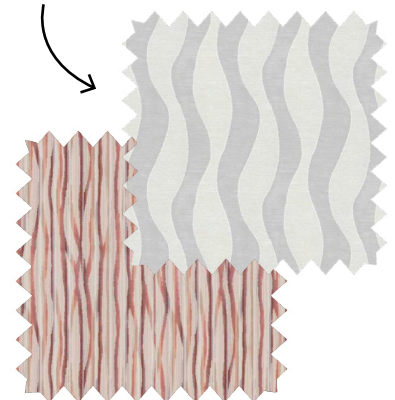
### Our Pick: VALANCE-TOPPED PANELS

The over-bed valance drapes into three sections and features a beaded trim that highlights the curve shape even more. Easy installation with Right-Angle Hook Strip (HS200/8W).



### Our Pick: CURVY FABRICS

Fabricut's Codex in Champagne, used for our drapery sheers, and Fabricut's Etcetra in Daybreak, used for our upholstered settee, both add a dynamic sense of motion with their wave patterns.



### Our Pick: SCALLOPED BEDSKIRT

This three-piece scalloped bed skirt overlaps beautifully, with graceful curves that create a seamless and elegant look. Easy installation with our Basting / Tacking Gun (ST26).

### Our Pick: ARCHED CORNICE DESIGN

Our cornices feature a soft arches, making a classic piece have a refreshed look. Explore our Cornice Board items.

Recreate THE CLASSICS



what's  
trending  
in

# UPHOLSTERY



WHAT'S TRENDING  
Classic  
Details  
WHAT'S TRENDING



## Our Pick: HEADBOARD

Our arch-shaped upholstered headboard is covered in Fabricut's Hayes in Sky, a vibrant blue textured velvet that makes this piece a focal point in the space. Create a fabric-covered Welt Cord (WCIO) to enhance the curved design.



Abstract Patterns

Global

Textured Velvets

Artisanal Embellishments



## Our Pick: SETTEE DETAILS

Artisanal details are trending in upholstery, and we've chosen our French Gimp Trim in Ivory (G20S/2I) to bring our settee to life.



*Tip:* Use our Magnetic Tack Hammer (MH10) for easy installation of decorative nails.

## Our Pick: HEADBOARD DETAILS

We've chosen our Round, #9 Metal Upholstery Nails in Nickel finish (UN20/N) for our upholstered headboard. The smaller diameter creates a greater impact, though these nails come in various sizes and finishes.



## Our Pick: SETTEE FABRIC

Fabricut's Etcetra in Daybreak, used for our upholstered settee, adds a global and abstract pattern to modernize this antique piece of furniture.

Recreate THE CLASSICS

© 2024 Rowley Company LLC | All rights reserved

what's  
trending  
in

# WINDOW TREATMENTS



WHAT'S TRENDING  
Layer &  
Embellish  
WHAT'S TRENDING



*Our Pick:* ROMAN SHADE  
WITH COORDINATING CORNICE

We've layered our motorized Roman shade under an arched cornice using the same fabric, adding depth and interest. This window treatment blends modern convenience with elegant design.



Trims

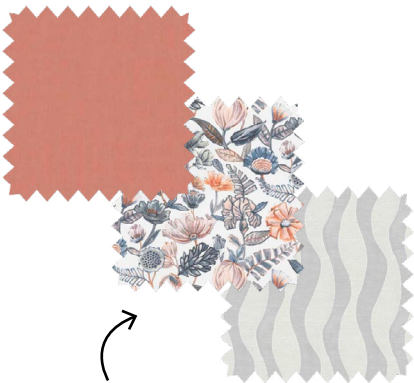
Layered Draperies

Roman Shade with Cornice

Inverted Pleat Header

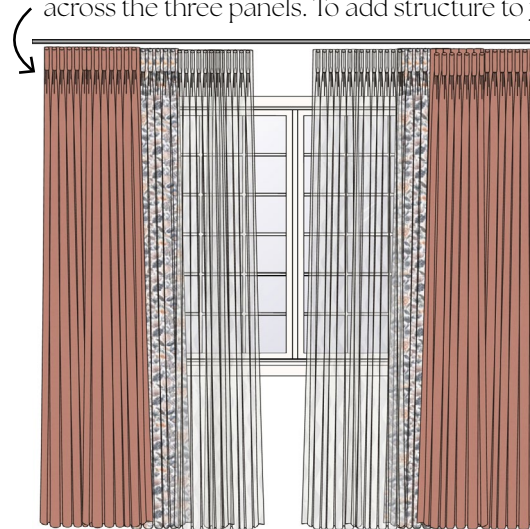
*Our Pick:* INVERTED PLEAT HEADER

This header style features inward-facing pleats for a sleek, tailored look across the three panels. To add structure to your header, use Buckram.



*Our Pick:* FABRIC LAYERS

We've layered our drapery to perfection using Fabricut's Prose in Sunrise, Alice's Wonderland in Day Break, and Codex in Champagne.



*Our Pick:* DOUBLE TRIM

We've used two trims side-by-side on our main fabric to add visual depth and an artisanal touch: Fabricut's Rivulet in Sunrise and Tingling in Baby's Breath.

Recreate THE CLASSICS

© 2024 Rowley Company LLC | All rights reserved