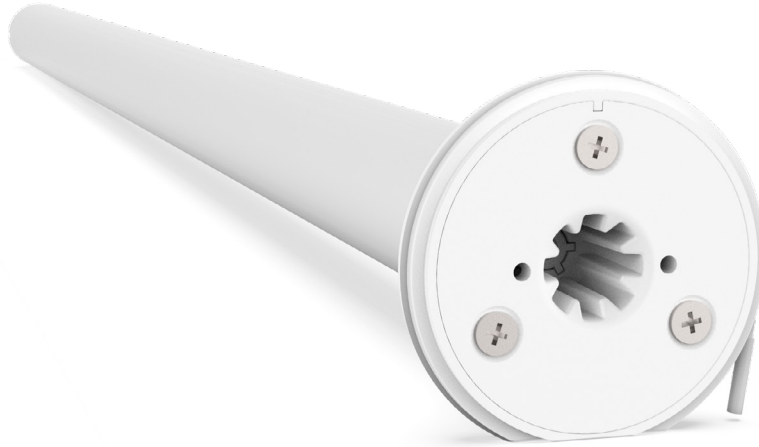


25 mm Standard Wirefree Tubular Motor RTM5VL25, RTM5VL25S



Li-ion battery powered motorized shades are a perfect retro fit for existing homes or small commercial projects. Li-ion powered motors require no electrical wiring, no external battery pack and no complicated installation.

The standard 25 mm motor allows a maximum shade size of 84" x 84" and has a 21 ½" minimum shade width / roller tube length.



2-Way RF Communication

Integrated radio frequency control allows for easy programming of individual, group or ALL control across window treatments.



Leveling Control

This feature allows for precise positioning of multiple window treatments, ensuring perfect alignment.



Preferred Upper / Lower Limit Settings

Electronic "autoset" limits accurately program preferred upper and lower limit settings.



Favorite Position

Allows a most used or favorite position to be set between upper and lower limit settings.



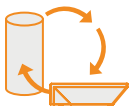
Adjustable Speed

Three operational speed settings available, allowing you to customize the open / close speed of your shade.



Optimal Solar Recharge Option

Pairs with optional solar panel battery charger for autonomous recharging of the built-in li-ion battery.



IOT Integration

Pairs with several voice control systems using the R-TEC Hub and Automation[®] App, including Apple HomeKit, Amazon Alexa, Google Assistant, IFTTT and SmartThings.



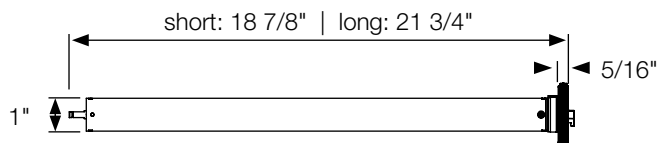
Battery Powered

Rechargeable built-in Li-ion battery that operates up to 500 up and down cycles per charge (based on recommended shade size).

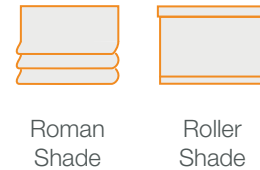
SPECIFICATIONS

Voltage	5 V DC	Limit Switch Type	Electronic
Torque	1.1 Nm	Amps	0.83 A
Max. Run Time	12 min.	Battery Size / Type	2600 mAh
Speed	20 RPM (Adj. to 24 or 28)	Temperature Working Range	32° F - 140° F (0° C - 60° C)
Radio Frequency	433.92 MHz	Insulation Class	III
RF Modulation	FSK	Sound Level	~46 DB
IP Rating	IP20	Power	10 W

DIMENSIONS



APPLICATIONS



USE WITH

Compatible Power Options

Item #	Description
RTMLDSSBC	5v USB Wall Charger, 2A
RTMLDSSUSB	Micro USB Charger Cable, 157"
RTM5VLCXT48	Micro USB Extension Cable, 48"
RTM5VLMCK1	5v Micro USB/Magnetic Charger Cable Kit (1 cable and 1 connector)
RTM5VLMCK5	5v Micro USB/Magnetic Charger Cable Kit (1 cable and 5 connectors)
RTM5VLMC25	USB/Magnetic Connector, 25 pieces
RTMSOLAR2	Solar Panel Battery Charger

Compatible Brackets & Bracket Covers

Item #	Description
RSB10	Bracket: 1 5/8" Projection, 2 1/4" Width
RSB20	Bracket: 2 1/8" Projection, 2 1/4" Width
RSBC10/	Bracket Cover for RSB10 (SN, W or K)
RSBC20/	Bracket Cover for RSB20 (SN, W or K)
RSNB10	Bracket: 1 5/8" Projection, 1 1/2" Width
RSNB20	Bracket: 2 1/8" Projection, 1 1/2" Width
RSNB30	Bracket: 2 7/8" Projection, 1 1/2" Width

Compatible Drive Set Kits & Motor End Covers

Item #	Description
RTMDRK25114	1 1/4" Drive Set Kit (includes motor adapter plate, crown & drive set and end pin)
RTMDRK25112	1 1/2" Drive Set Kit (includes motor adapter plate, crown & drive set and end pin)
RTM5VMC2528/	25/28 mm Motor End Covers (W or K)

Compatible R-TEC Smart Controls

Item #	Description
RTMHUB2	R-TEC Hub, includes USB Power Cord, Power Plug & Ethernet Cable, Range: 60'
RTMUSR	ARC USB Signal Repeater, Extends the wireless range of the R-TEC Hub and Remotes up to 60'
RTMLDSSBC	Wall Charger for USB Signal Repeater
RTMHR1C	Handheld Remote with Wall Mount, 1 Channel, Range: 65'
RTMHR5C	PushHandheld Remote with Wall Mount, 5 Channel, Range: 65'
RTMHR15C	Handheld Remote with Wall Mount, 15 Channel, Range: 65'
RTMHRP15C RTMHRP15C/K	Push15 Handheld Remote with Wall Mount, 15 Channel, Range: 65'
RTMWSR5C	Surface Wall Mount Switch, 5 Channel, Range: 65'
RTMWSR1C	Cut-In Wall Mount Switch, 1 Channel, Range: 65', Requires RTMSMB/W
RTMWSR2C	Cut-In Wall Mount Switch, 2 Channel, Range: 65', Requires RTMSMB/W
RTMWSR15C	Cut-In Wall Mount Switch, 15 Channel, Range: 65', Requires RTMSMB/W
RTMSMB/W	Surface Mount Wall Back Box for Cut-In Style Remotes
RTMISS	Interior Sun Sensor, Range: 65'

Compatible Aluminum Rollers

Item #	Description
RC58/4	1 1/4" (4', 6', 8', 12' or 16' lengths)
RC60/4	1 1/2" (4', 6', 8', 12' or 16' lengths)