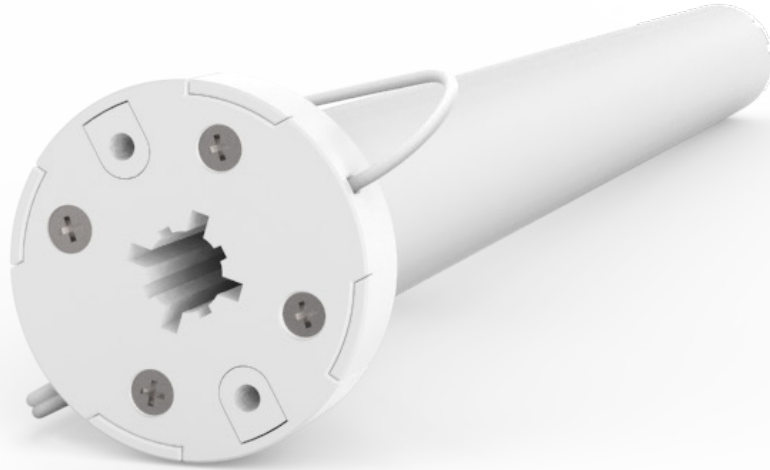


25 mm Standard DC Tubular Motor RTMDC25



DC motorized shades are ideal when designing a new home, motorizing an existing home or planning a commercial project. DC wired shades are maintenance free and the AC power supply adapter keeps installation costs to a minimum. They offer a low voltage, easy-to-use and program solution to suit a large range of applications, including narrow applications, setting this tubular motor apart from other options.

The standard 25 mm motor allows a maximum shade size of 84" x 84" and has a 14 ½" minimum shade width / roller tube length.



2-Way RF Communication

Integrated radio frequency control allows for easy programming of individual, group or ALL control across window treatments.



Leveling Control

This feature allows for precise positioning of multiple window treatments, ensuring perfect alignment.



Preferred Upper / Lower Limit Settings

Electronic "autoset" limits accurately program preferred upper and lower limit settings.



Favorite Position

Allows a most used or favorite position to be set between upper and lower limit settings.



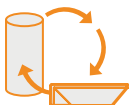
Adjustable Speed

Three operational speed settings available, allowing you to customize the open / close speed of your shade.



Optimal Solar Recharge Option

Pairs with optional solar panel battery charger for autonomous recharging if using High Capacity Battery Pack power option.



IOT Integration

Pairs with several voice control systems using the R-TEC Hub and Automation[®] App, including Apple HomeKit, Amazon Alexa, Google Assistant, IFTTT and SmartThings.



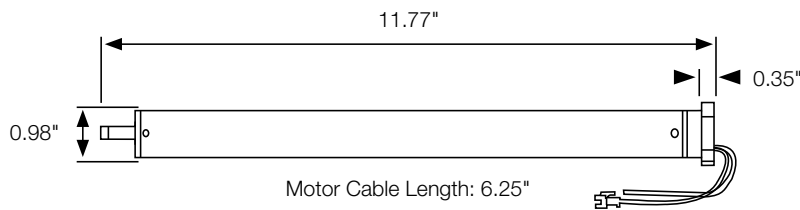
Optional Battery Power

Pair your DC Tubular Motor with the Battery Pack or Battery Tube so there's no hassle of a power supply cord.

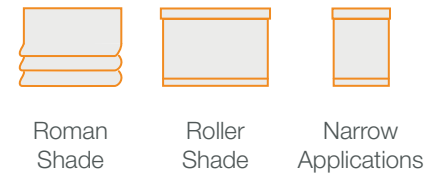
SPECIFICATIONS

Voltage	12 V DC	Limit Switch Type	Electronic
Torque	1.1 Nm	Amps	0.83 A
Max. Run Time	10 min.	Battery Size / Type	External Battery Pack
Speed	40 RPM (Adj. to 30 or 20)	Temperature Working Range	32° F - 140° F (0° C - 60° C)
Radio Frequency	433.92 MHz	Insulation Class	III
RF Modulation	FSK	Sound Level	~46 DB
IP Rating	IP44	Power	10 W

DIMENSIONS



APPLICATIONS



USE WITH

Compatible Power Options

Item #	Description
RTMDCBT	Battery Tube for 25 mm Motors (requires 8 AA Li-ion Batteries)
RTMDCHCBP	High Capacity Battery Pack for 25/28 mm Motors (requires RTMLBC or RTMSOLAR2)
RTMLBC	Battery Charger 12', .4Amp, 12V
RTMSOLAR2	Solar Panel Battery Charger
RTMDC18/25	Power Supply for 25 mm Motors 5'
RTMDCXT48	Power Cable Extender 48"

Compatible Brackets & Bracket Covers

Item #	Description
RSB10	Bracket: 1 5/8" Projection, 2 1/4" Width
RSB20	Bracket: 2 1/8" Projection, 2 1/4" Width
RSBC10/	Bracket Cover for RSB10 (SN, W or K)
RSBC20/	Bracket Cover for RSB20 (SN, W or K)
RSNB10	Bracket: 1 5/8" Projection, 1 1/2" Width
RSNB20	Bracket: 2 1/8" Projection, 1 1/2" Width
RSNB30	Bracket: 2 7/8" Projection, 1 1/2" Width

Compatible Aluminum Rollers

Item #	Description
RC58/4	1 1/4" (4', 6', 8', 12' or 16' lengths)
RC60/4	1 1/2" (4', 6', 8', 12' or 16' lengths)

Compatible R-TEC Smart Controls

Item #	Description
RTMHR1C	Handheld Remote with Wall Mount, 1 Channel, Range: 65'
RTMHR5C	Handheld Remote with Wall Mount, 5 Channel, Range: 65'
RTMHR15C	Handheld Remote with Wall Mount, 15 Channel, Range: 65'
RTMWSR5C	Surface Wall Mount Switch, 5 Channel, Range: 65'
RTMWSR15C	Wall Box Mount Switch, 15 Channel, Range: 65'
RTMHUB2	R-TEC Hub, includes USB Power Cord, Power Plug & Ethernet Cable, Range: 60'
RTMISS	Interior Sun Sensor, Range: 65'
RTMUSR	ARC USB Signal Repeater, Extends the wireless range of the R-TEC Hub and Remotes up to 60'
RTMLWCW	Wall Charger for USB Signal Repeater

Compatible Drive Set Kits & Motor End Cover Kits

Item #	Description
RTMDRK25114	1 1/4" Drive Set Kit (includes motor adapter plate, crown & drive set and end pin)
RTMDRK25112	1 1/2" Drive Set Kit (includes motor adapter plate, crown & drive set and end pin)
RTMMC25/	25 mm Motor End Cover Kit (W or K)