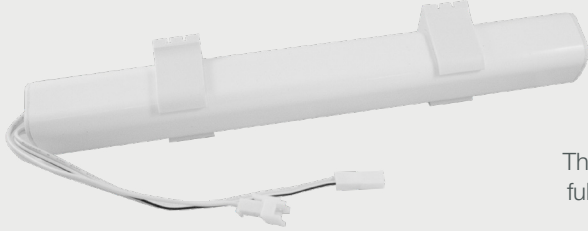


High Capacity Battery Pack RTMDCHCBP



High Capacity Battery Pack - The rechargeable Li-ion Battery Pack enables DC Tubular Motors to operate wirelessly and without the constraints of traditional battery wands with disposable batteries.

The small profile allows for optimal placement in the window pocket, fully recharges in about 6 hours and can be paired with the optional Solar Panel Battery Charger for continuous recharging.

FEATURES



Up to 500
Up / Down Cycles
on Single Charge



Small
Profile



Battery Health
Status in R-TEC
Automation[®] App



Recharges
in 6 hours

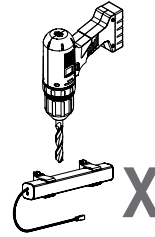
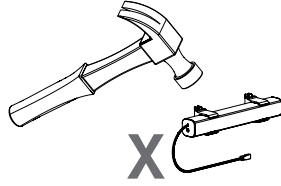
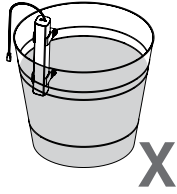


Optional Solar
Panel for Continuous
Recharging

SAFETY INSTRUCTIONS

WARNING: Important safety instructions to be read before installation.

Incorrect installation can lead to serious injury and will void manufacturer's liability and warranty.



CAUTION

- Do not expose to moisture or extreme temperatures.
- Do not allow children to play with this device.
- Use or modification outside the scope of this instruction manual will void warranty.
- Installation to be performed by a suitably qualified installer.
- For use with DC powered Cord Lift, Tilt and tubular motors.
- Ensure correct crown and drive adaptors are used for the intended system.
- Use only Rollease Acmeda hardware.
- Before installation, remove any unnecessary cords and disable any equipment not needed for powered operation.
- Do not expose the battery to water or install in humid or damp environments.
- Do not drill into battery body.
- The routing of cable through walls shall be protected by isolating bushings or grommets.
- Ensure cables are clear and protected from moving parts.
- Do not use if any cables are damaged

Important safety instructions to be read prior to operation.

- It is important for the safety of persons to follow the enclosed instructions. Save these instructions for future reference.
- Persons (including children) with reduced physical, sensory or mental capabilities, or lack of experience and knowledge should not be allowed to use this product.
- Keep battery away from acid, alkali, heat & fire.



Do not dispose of in general waste.

Please recycle batteries and damaged electrical products appropriately.



SPECIFICATIONS

Input Volts	12.6V
Output Volts	12.0V
Capacity	2600mAh
Insulation Class	III
Battery Size/Type	1-1/4" x 1-1/4" x 10" / Lithium-ion Rechargeable
Temperature Working Range	32°F to 140°F (0°C to 60°C)

1 INSTALLATION

1.1 Charging

Charging uses the 2 pin locking “SMR” style connector.



IMPORTANT

Rechargeable Battery Pack must be fully charged prior to first use to prolong battery lifespan.

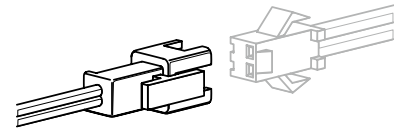
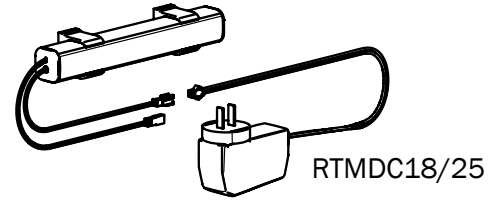
Step 1. Connect the High Capacity Battery Pack to the Battery Charger. RTMDC18/25

Step 2. Charge for 6 hours.

Step 3. Install as required.

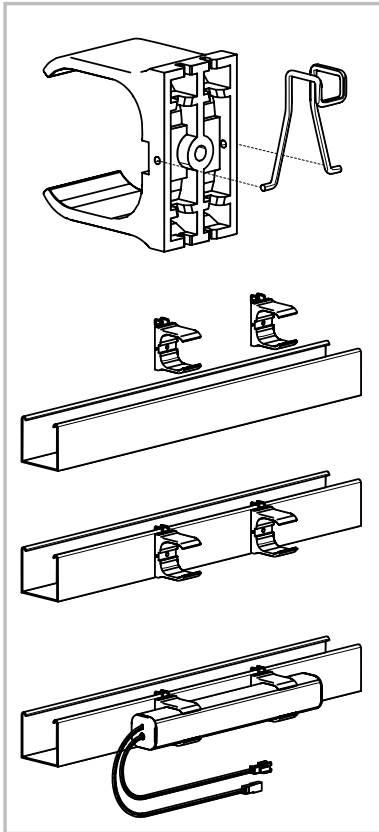
See Section 1.2 Attachment Methods

Charging Cable

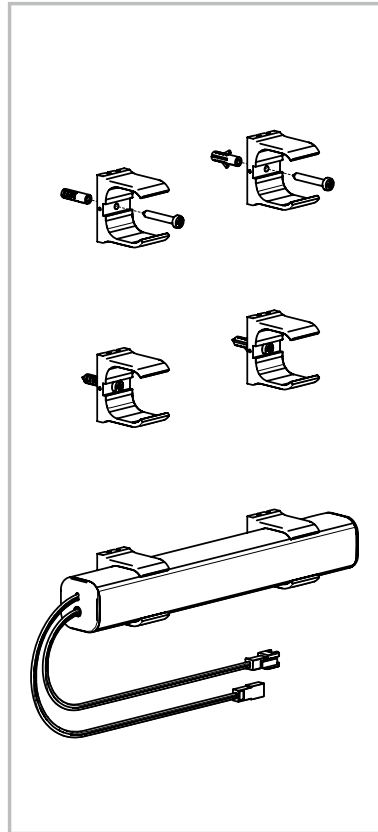


1.2 Attachment Methods

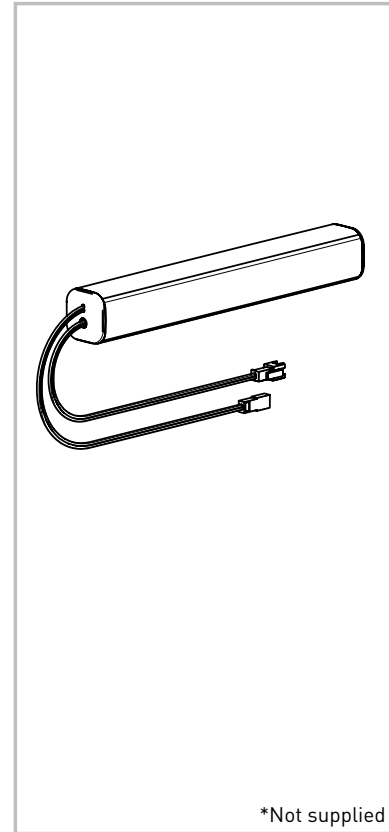
Hook



Screw



Double Sided Tape*



*Not supplied



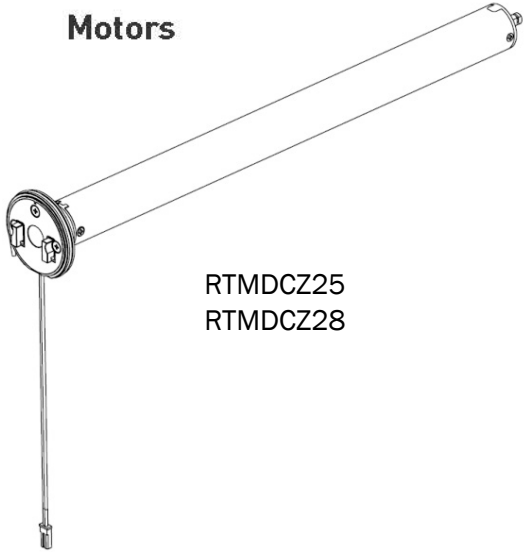
IMPORTANT

Do not install Rechargeable Battery Pack where it will be exposed to direct sun light.

1.3 Motor Connections

Charging uses the 2 pin, non-locking "JST" style connector.

Motors



RTMDCZ25
RTMDCZ28

Any Questions?

Contact our R-TEC Automation® in-house experts at 866.985.3423. Email us at RTECAutomation@RowleyCompany.com.