

Roller Shade Spring Instructions

Introduction

The Roller Shade Spring System is a traditional system to manually control roller shades. The total weight of the shade can be as high as 5 lb. By pulling at the bottom of the shade, an operator can raise and lower the shade. Fig. 1 shows an assembled roller shade with the roller shade spring inside, end brackets and bracket covers.

The roller shade can be mounted either inside or outside the window casing; and the shade can be regular wind or reverse wind as shown in Fig. 2.

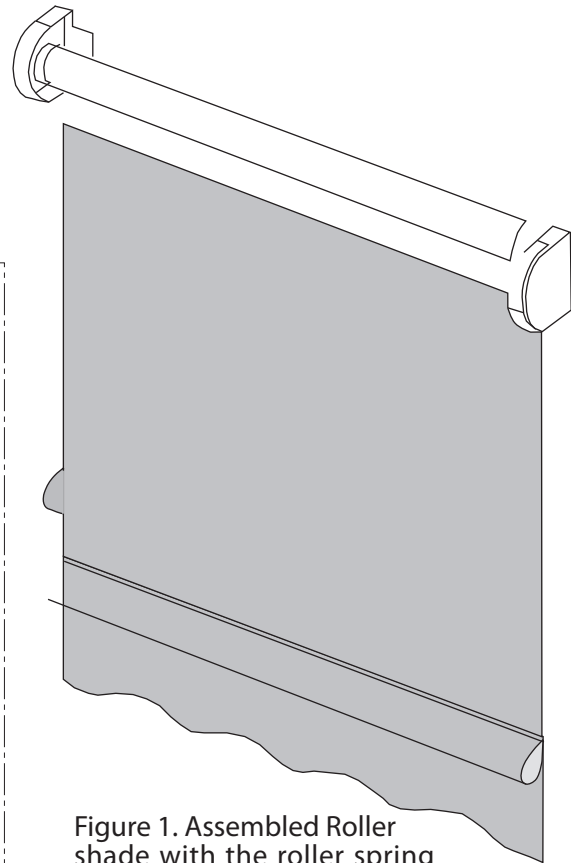
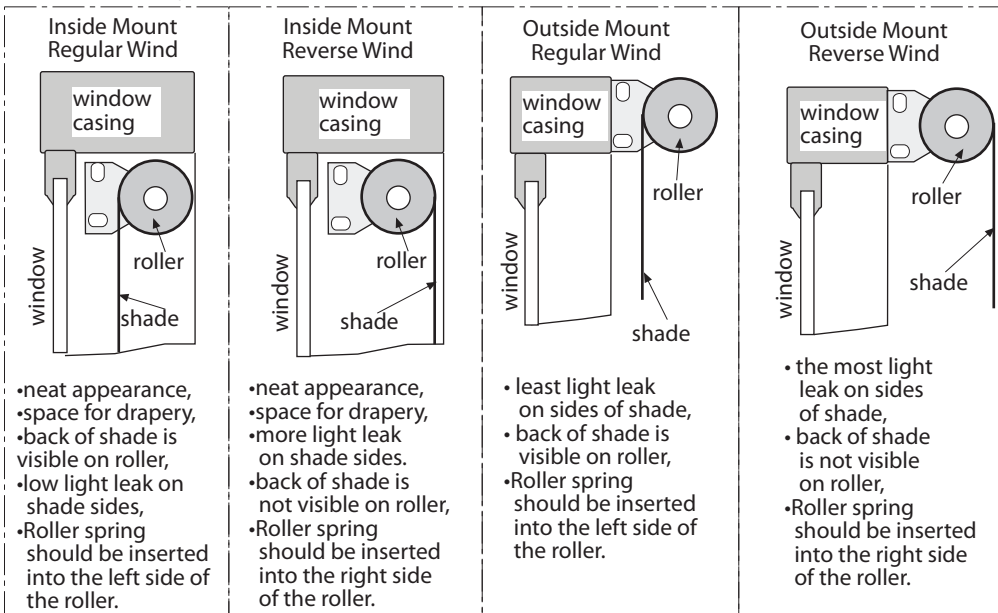


Figure 1. Assembled Roller shade with the roller spring

Figure 2. Side view of the top portion of the window



Basic Components are shown in Fig. 3.

1. Roller Spring (Stk# RS) includes:
Roller Spring and End Plug.
2. Bracket Set (Stk# RS1 and RS2) include:
2 Universal Brackets, 2 Bracket Covers,
2 Bracket Inserts, 4 screws.
3. Aluminum Roller (Stk# RC50, 1" diameter) in 4', 6', 8' and 12' lengths.

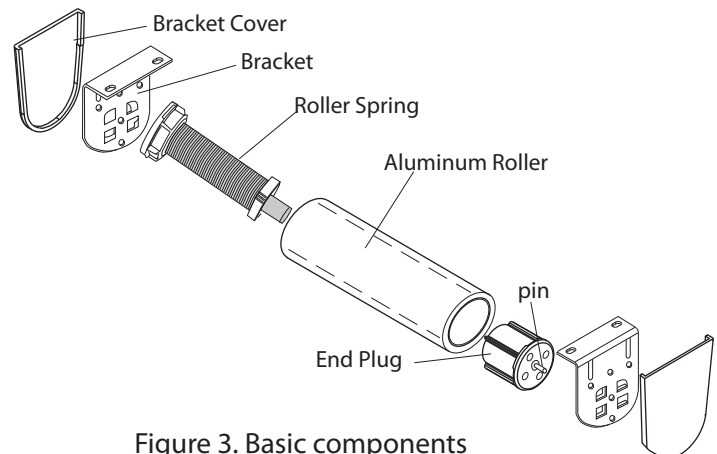


Figure 3. Basic components

Brackets are available to mount the roller shade, see Fig. 4.

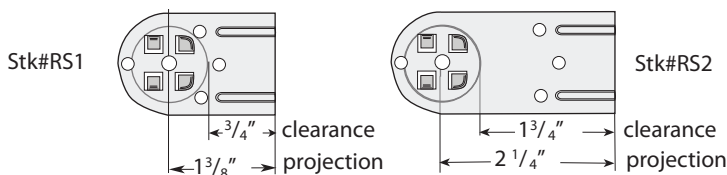


Figure 4. Brackets for Roller Spring (Stk# RS) and 1" tube

Measurement

Step 1. Measurements (see Fig. 5)

A. Inside Mount

Measure the Width inside the casing (jam-to-jam, or casing-to-casing), where the brackets will be installed; and the Length from the top of the bracket to the bottom of the window.

B. Outside Mount

Measure the Width outside between the outer edges of the window trim where the brackets will be installed; and the Length from the top of the bracket to the bottom of the window.

Note: Measure all windows for accuracy even though they may look the same.

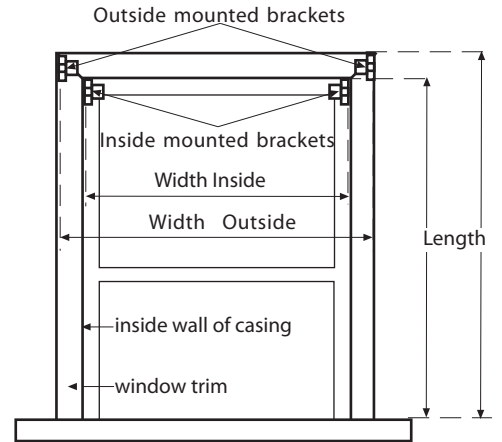


Figure 5. Measurements on a window

Fabrication

Step 2. Cut shade cloth and aluminum roller.

Width - 1¹/₁₆" = Cut length of the roller and Finished Shade Cloth Width

Length + 10" = Finished Shade Cloth Length (includes allowance for pocket and to wrap around roller at top)

Note: Cut the shade cloth "square" to ensure the shade will travel up and down straight.

Step 3. Peel the yellow plastic backing from the sticky tape on the roller. For a regular wound shade, affix the top face of your shade cloth to the roller. For a reverse wound shade, affix the backside of the shade cloth to the roller. Make sure to adhere the cloth straight onto the roller so the shade rolls up evenly.

Installation

Step 4. At the job site, install the brackets on the window casing according to Fig. 5. If brackets are going to be mounted inside the casing, try to position them as close to the window as possible, yet have enough space for the roller shade when completely rolled up.

Step 5. For best results, deburr the inside edge of the roller after cutting to the correct size. Insert the shade roller spring into the roller on the left side for regular wind, or on the right side for reverse wind as described in Figure 2 and as shown in Figure 6. Insert the end plug into the opposite end of the roller. This may require additional force, but do not push directly on the clutch blade or the end plug pin (see Figure 6).

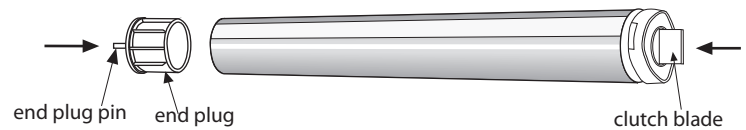


Figure 6. Install roller spring and end plug

Step 6. Put the roller spring bracket insert on the roller spring side bracket and end plug bracket insert on the end plug side bracket. Lay the bracket insert on the bracket, push the insert downward into the place while squeezing the top opening as shown in Figure 7.

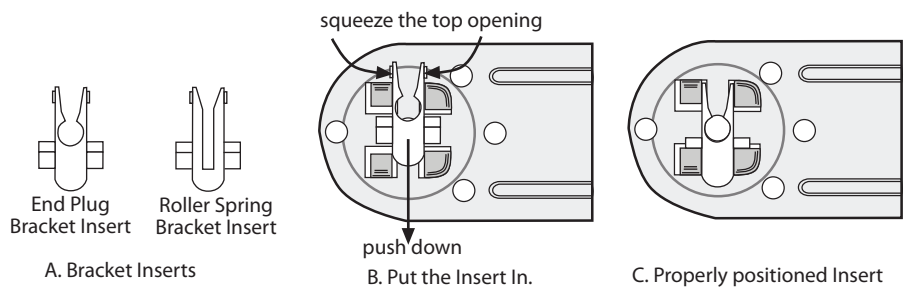


Figure 7. Put bracket inserts in

Step 7. Roll the shade all the way up by hand. Install shade end plug pin into the end plug bracket. Slide the clutch blade in the clutch side bracket. The roller should fit in the brackets securely, with just a little play.

Step 8. Pull the shade all the way down. Remove the shade from the brackets: spring side first, then end plug side while taking care to avoid releasing the spring. Repeat Steps 7 and 8 one to five times to get proper spring tension.

Step 9. Use end bracket covers to cover the brackets on outside mount roller shades. After the spring roller shade is installed, slide the bracket covers onto the brackets.