

Additional Information for Swag Template Video, (DYC23)

To make our Swag Template (**DYC20**) easier to follow, we have made changes to the template in 2003. The changes only affect cutout swags.

Which Version Do You Have?

On the Swag Template, close to the title, you will find the swag template copyright year. The **pre-2003** version has the copyright year of ©1996, and the **2003** version has the copyright of ©1996, ©2003, as shown at the right.

If You Have a Pre-2003 Version:

If you have a **pre-2003** version, follow the instructions in this video tape and/or the instructions came with your template. The instructions in this **Additional Information** sheet DOES NOT apply to you.

If You Have a 2003 Version:

If you have a **2003** version, you may still follow the instructions in this video tape and/or the instructions came with your template. However, if you are making a **cutout swag**, you may find the instructions in this **Additional Information** sheet easier and simpler to follow.

Swag Template

Pre-2003 Version

Rowley Co. ©1996

Swag Template

2003 Version

Rowley Co. ©1996, ©2003

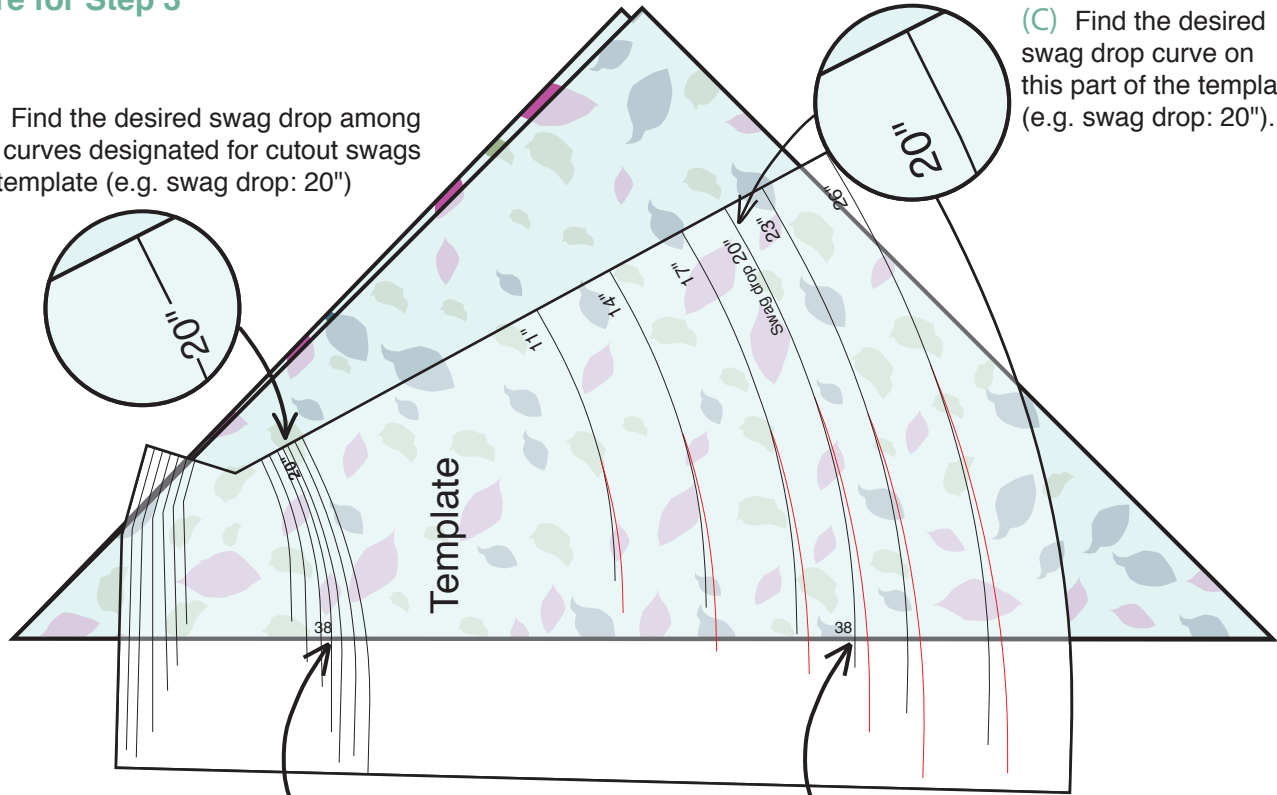
The Following Instruction Only Apply to the 2003 Version Swag Template (DYC20), And For the Cutout Swags Only:

1. Prepare and fold the fabric according to the instruction video.
2. Place the Swag Template on the folded fabric.
3. See the **Figure for Step 3** (backside). On the template, an arrow with words "**For cutout swags, use the curved lines below**" points at a group of curves. Among these curves, find one with the desired **swag drop** (e.g. swag drop: 20"). Along the 20" swag drop curve, find the point with the desired **swag width** (e.g. swag width: 38"). Place this point on the fabric folded edge.
Among the large curves on the other side of the Swag Template title, find one with the desired **swag drop** (e.g. swag drop: 20"). Along the 20" swag drop curve find the desired **swag width** (e.g. swag width: 38"). Place this point also on the fabric folded edge.
4. Make a note of the color of the swag width (38" is in Black). See the **Figure for Step 4**, trace the pattern with a fabric marking pen.
5. For the rest of the steps, please follow the instructions in the video and/or the instructions came with your Swag Template.

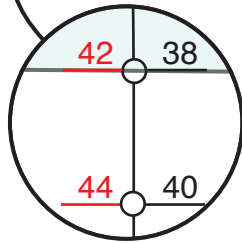
Figure for Step 3

(A) Find the desired swag drop among the curves designated for cutout swags on template (e.g. swag drop: 20")

(C) Find the desired swag drop curve on this part of the template (e.g. swag drop: 20").



(B) Along the 20" swag drop curve, find and align the desired swag width (e.g. swag width: 38") with fabric folded edge.



(D) Along the 20" swag drop curve, find and align the desired swag width (e.g. swag width: 38") with fabric folded edge.

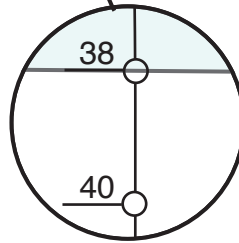


Figure for Step 4

(A) Mark dots through all the holes along both 20" swag drop curves.

(B) Trace along this edge.

(C) Remove the template, pattern is now traced on the fabric.

