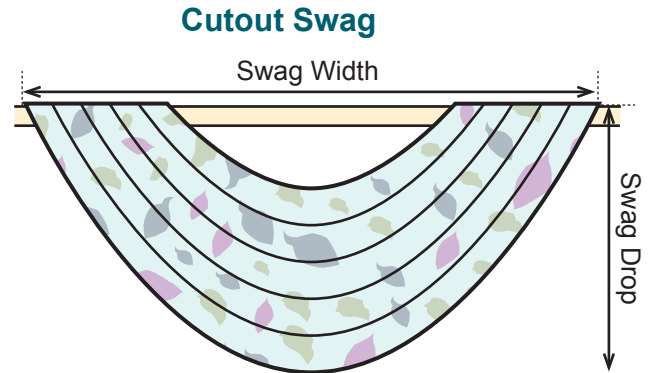
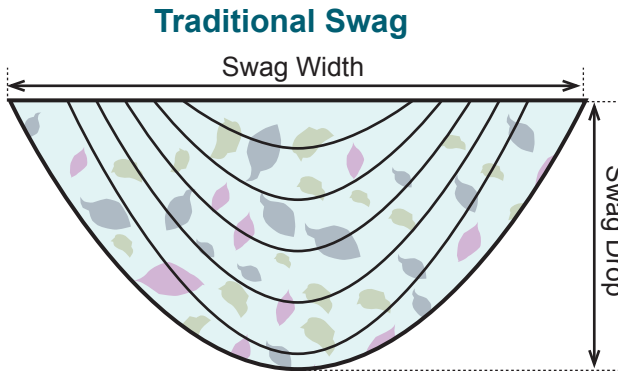


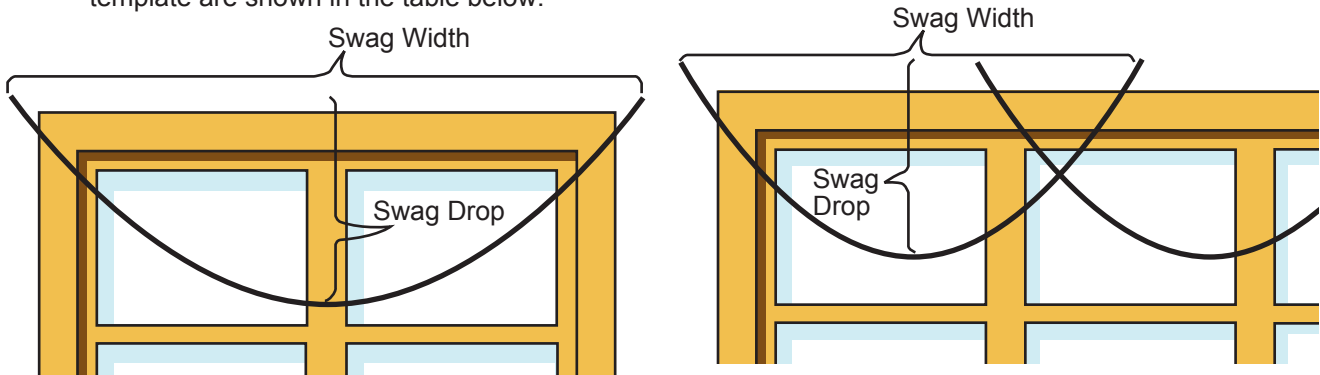
# Instructions for Using 2003 Version Swag Template Systems (DYC20)

The Swag Template System (DYC20) makes the process of designing, cutting, and forming swags much easier. The template can be used for making both traditional and cutout swags. For traditional swags, you also have the choice of 5, 6 or 7 pleat swags.



## Procedures for Traditional Swags:

**Step 1.** Drape a string at the window to plan, then measure the swag width and drop. The swag sizes covered by this template are shown in the table below:

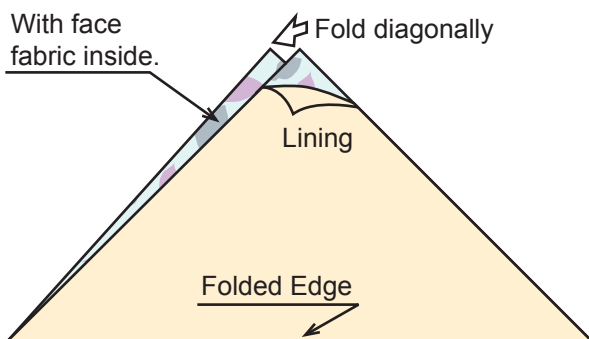


| Swag Drop        | 11"     | 14"     | 17"     | 20"     | 23"     | 26"     | 29"     |
|------------------|---------|---------|---------|---------|---------|---------|---------|
| Swag Width Range | 20"-30" | 24"-38" | 28"-44" | 32"-52" | 36"-58" | 42"-60" | 46"-60" |

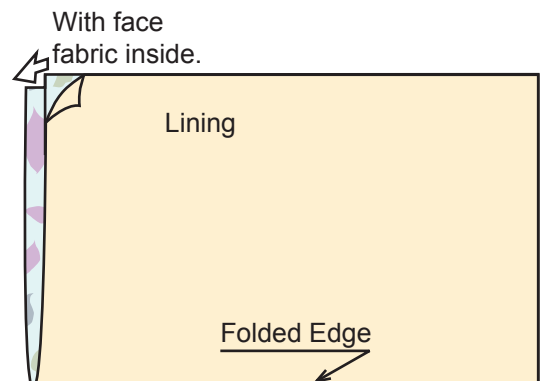
*Due to the differences in fabric drapability and stretchability, the finished swag may differ from the desired swag size by as much as + or - 1 inch.*

**Step 2.** Swags can be cut either on bias or straight or railroaded. However, Bias cut swags hang better. For a bias cut, find yardage requirement for 54" width fabrics in **Table 1** (page 8). **Table 2** (page 8) shows how to cut and seam the fabric to make a square. Prepare both face fabric and lining to the same size. Stack the face fabric and lining with the right sides together. Fold fabrics with lining side out.

### Bias Fold:



### Railroad or Straight Fold:



**The following procedures are the same for both bias or railroad or straight cut swag.**

**Note:** an example of a 5 pleat swag with 17" drop, 40" width is used to explain the following steps.

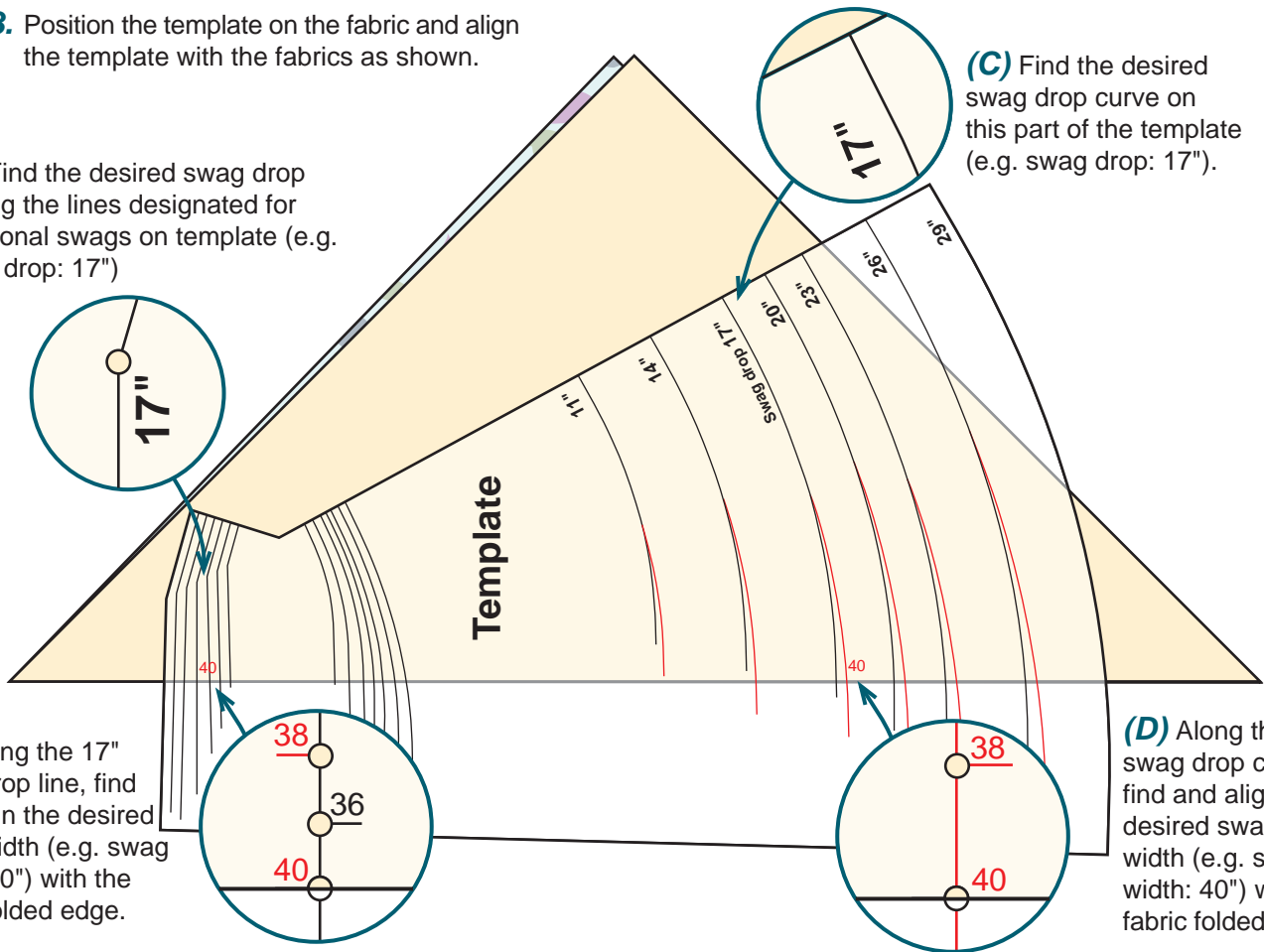
**Step 3.** Position the template on the fabric and align the template with the fabrics as shown.

**(A)** Find the desired swag drop among the lines designated for traditional swags on template (e.g. swag drop: 17")

**(C)** Find the desired swag drop curve on this part of the template (e.g. swag drop: 17").

**(B)** Along the 17" swag drop line, find and align the desired swag width (e.g. swag width: 40") with the fabric folded edge.

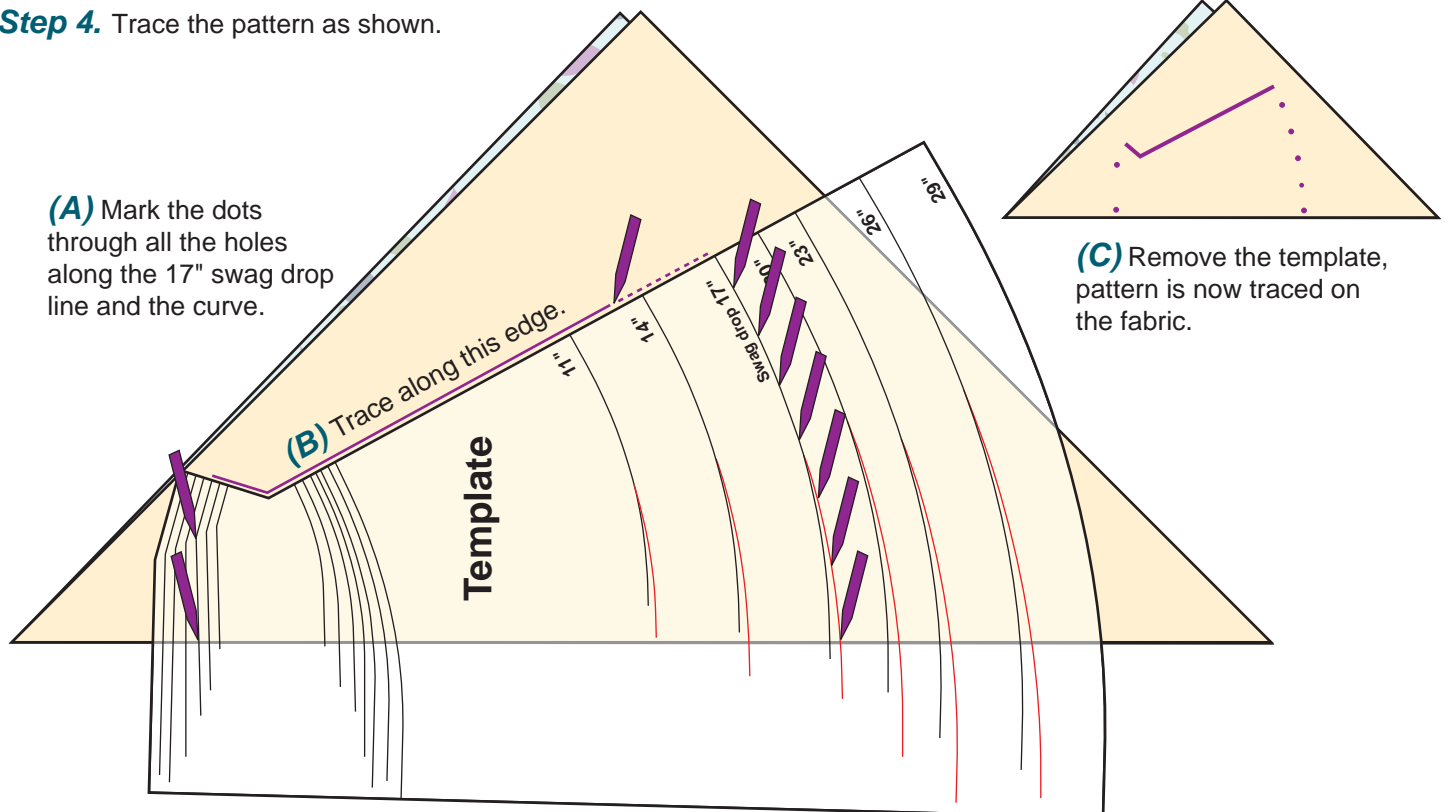
**(D)** Along the 17" swag drop curve, find and align the desired swag width (e.g. swag width: 40") with fabric folded edge.



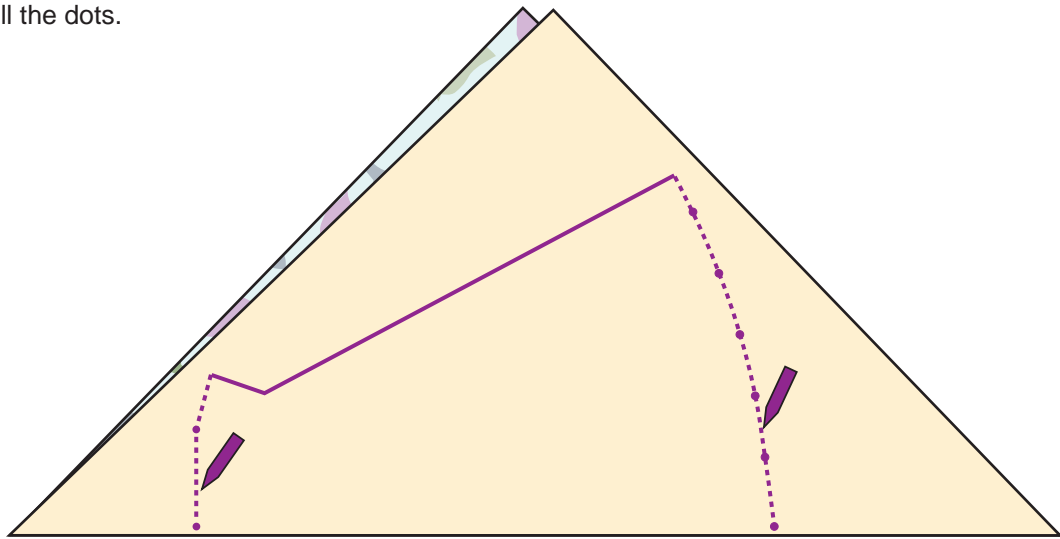
**Step 4.** Trace the pattern as shown.

**(A)** Mark the dots through all the holes along the 17" swag drop line and the curve.

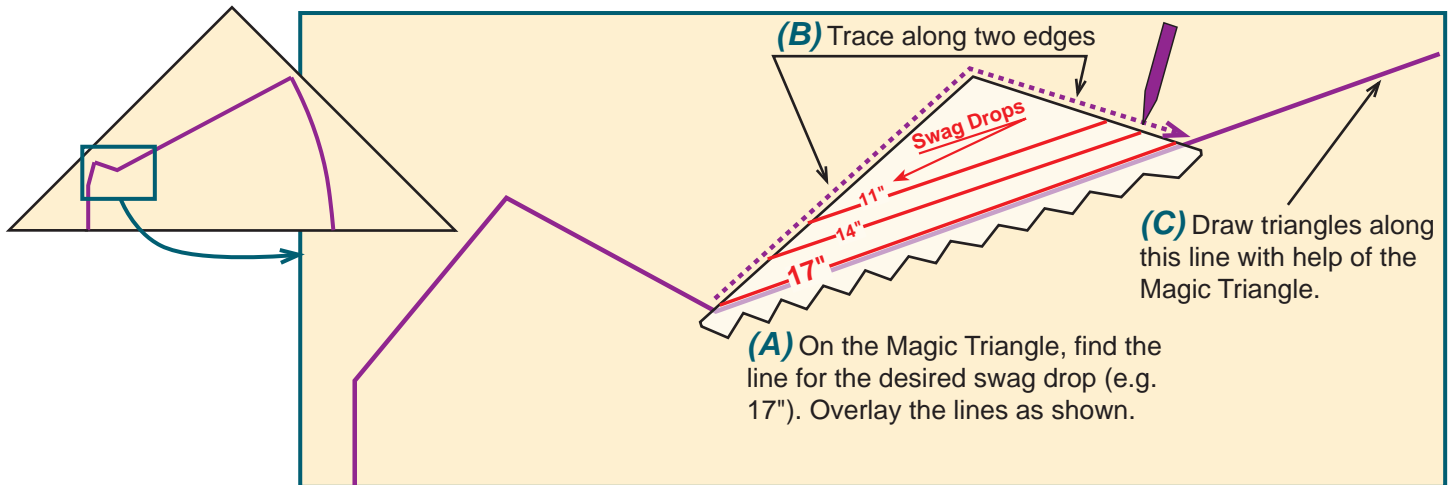
**(C)** Remove the template, pattern is now traced on the fabric.



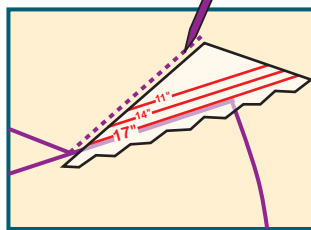
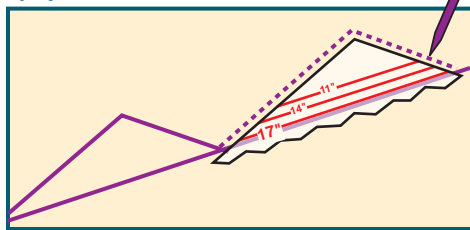
**Step 5.** Connect all the dots.



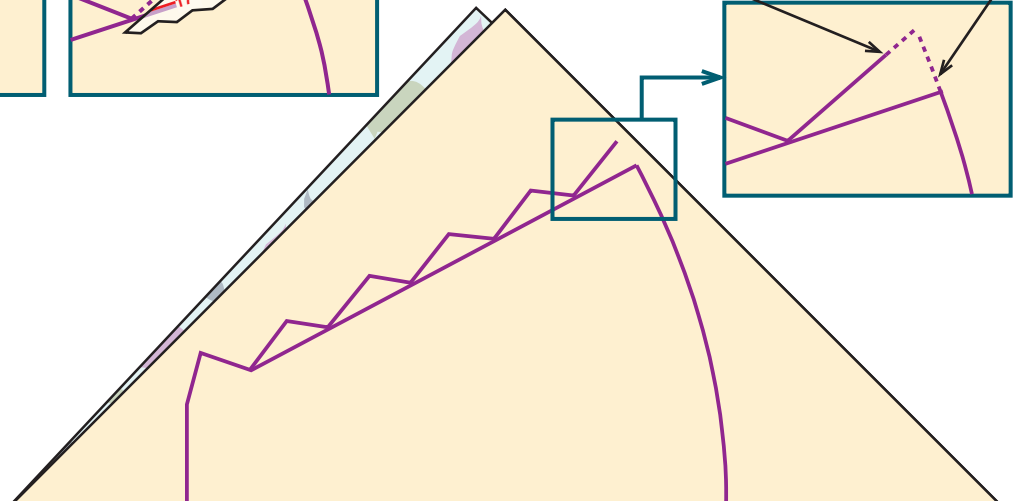
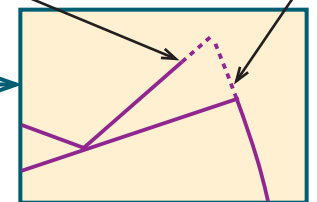
**Step 6.** Choose a Magic Triangle for the desired number of pleats (e.g. 5 pleats). The Triangles are color coded with the Template. If the swag width on the template is in red, use the red print side of the triangle (e.g. 17" drop, 40" width is printed in red on the template, so use the red print side of the Magic Triangle). Note all the numbers on Magic Triangle are swag drops.



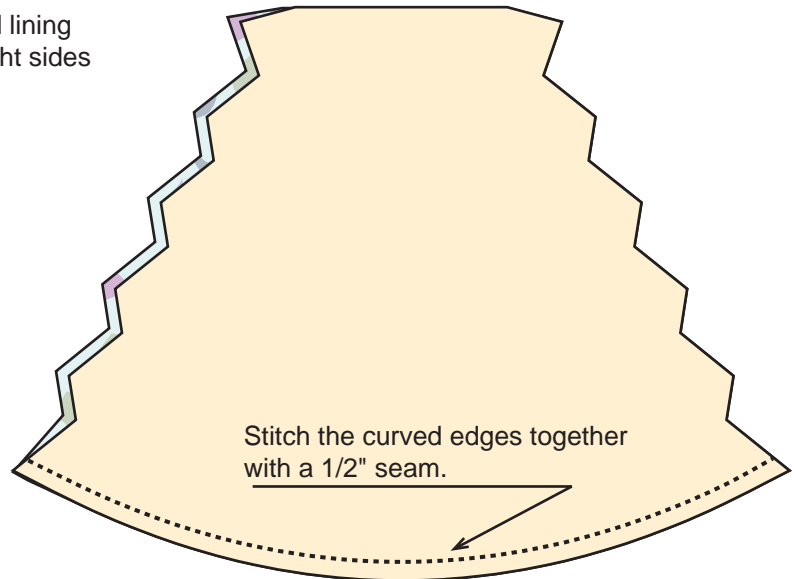
**(D)** Continue on.



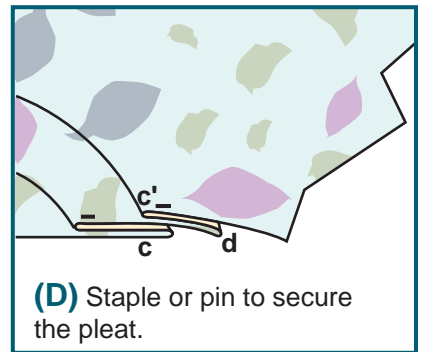
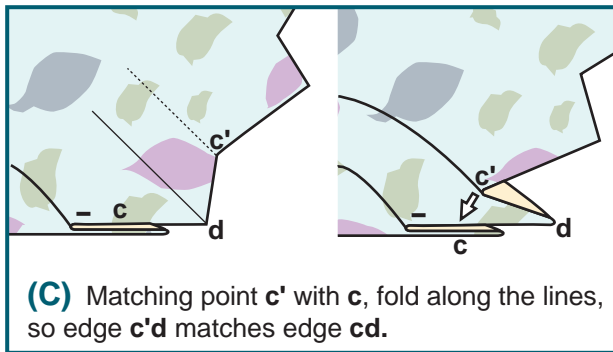
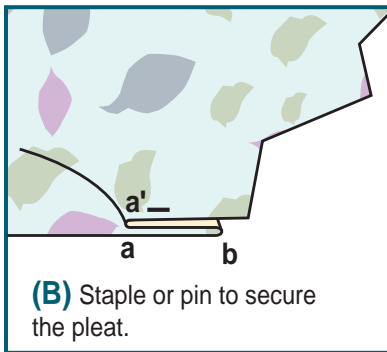
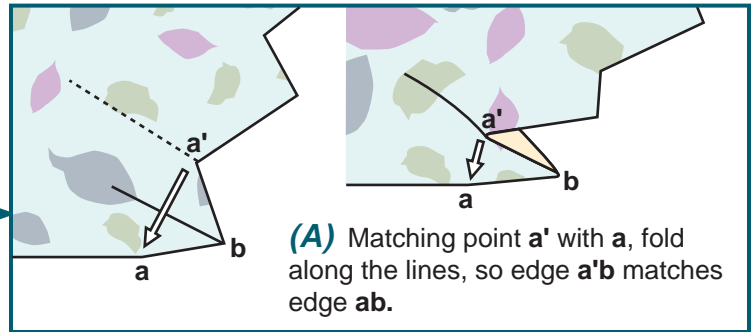
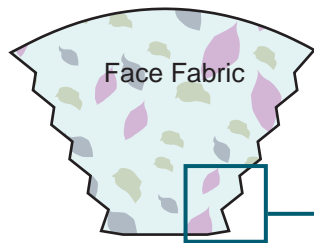
**(E)** Extend these two lines to meet at one point



**Step 7.** Cut fabric. Unfold. Stitch face fabric and lining together along the curved edge. Turn right sides out. Press.



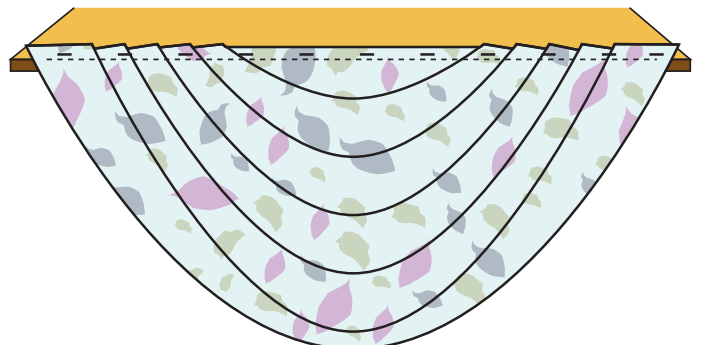
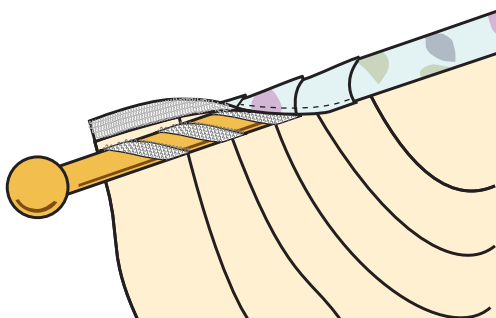
**Step 8.** Lay the swag, face fabric side up, on worktable. Fold pleats and pin or staple the swag as shown. Repeat folding and pinning on both sides.



**Step 9.** Stitch across the top to hold all the pleats. Staple the swag to a mounting board. Dress the pleats into round folds. Work on the top pleat first. Pleat by pleat, progress to the outer ones.

**Or**

Sew a strip of loop tape (our Stock#: **LT100**) to the back of swag and attach it to a pole spiral wrapped with pressure sensitive hook tape (our Stock #: **HPS100**).



## Procedures for Cutout Swags:

Follow the steps 1 and 2 on page 1.

**Note:** an example of a cutout swag with 20" drop, 38" width is used to explain the following steps.

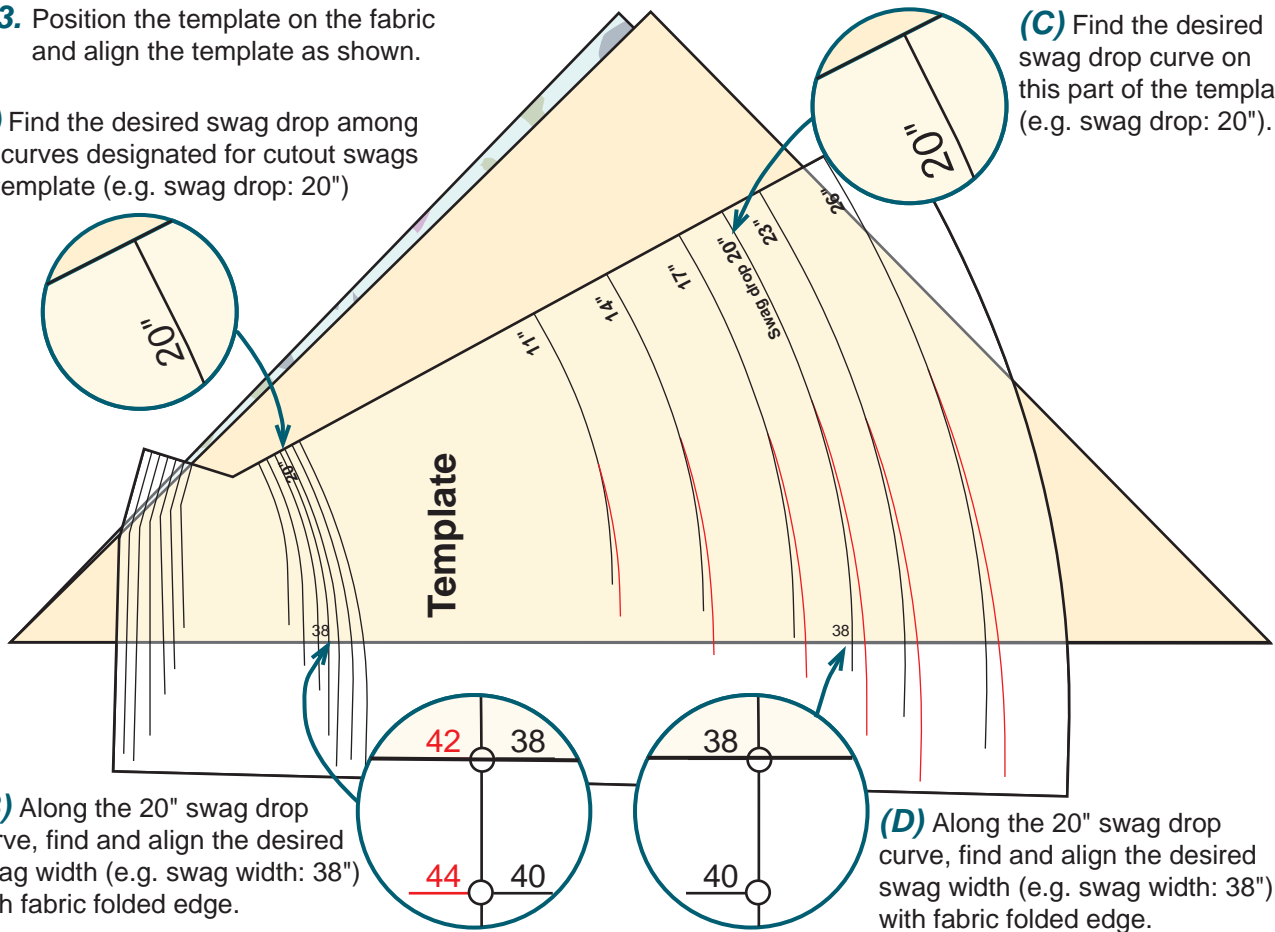
**Step 3.** Position the template on the fabric and align the template as shown.

**(A)** Find the desired swag drop among the curves designated for cutout swags on template (e.g. swag drop: 20")

**(C)** Find the desired swag drop curve on this part of the template (e.g. swag drop: 20").

**(B)** Along the 20" swag drop curve, find and align the desired swag width (e.g. swag width: 38") with fabric folded edge.

**(D)** Along the 20" swag drop curve, find and align the desired swag width (e.g. swag width: 38") with fabric folded edge.

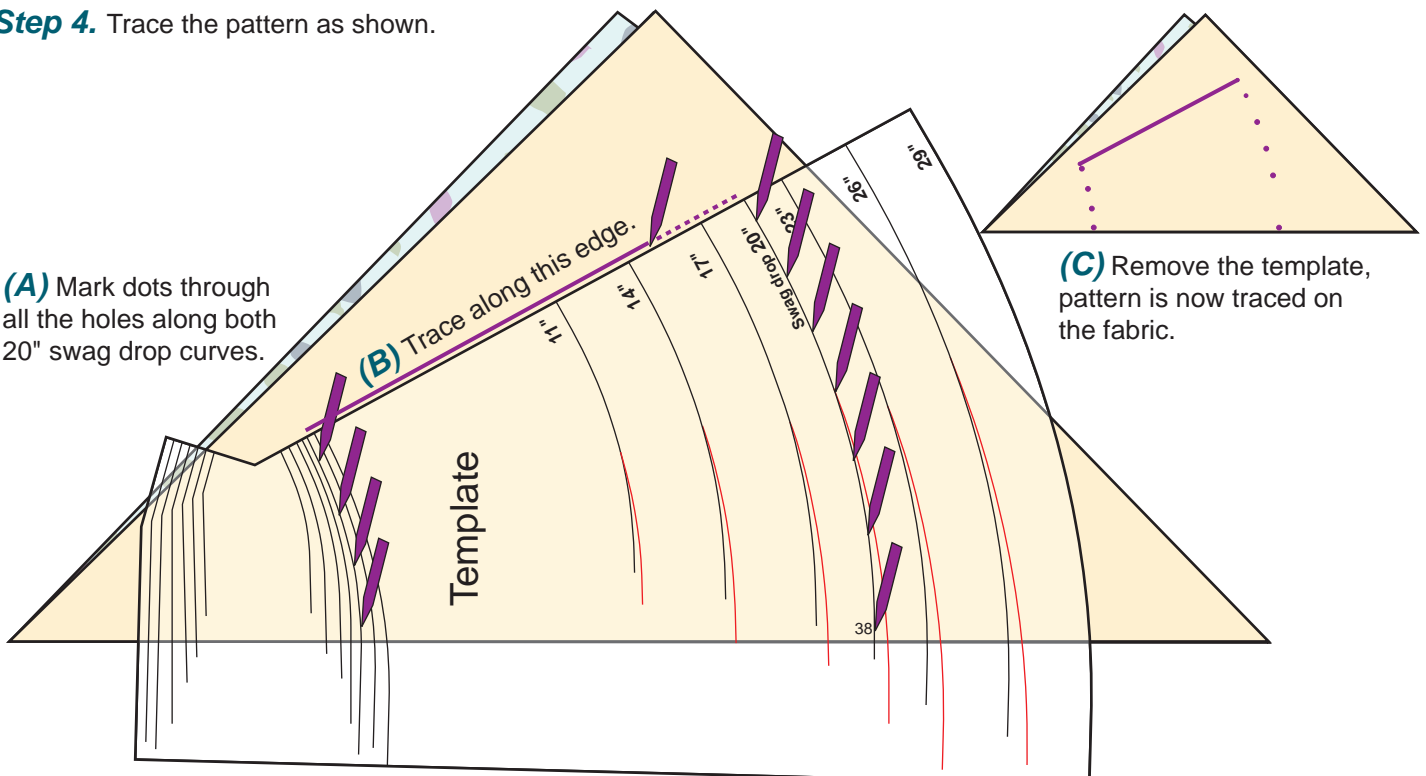


**Step 4.** Trace the pattern as shown.

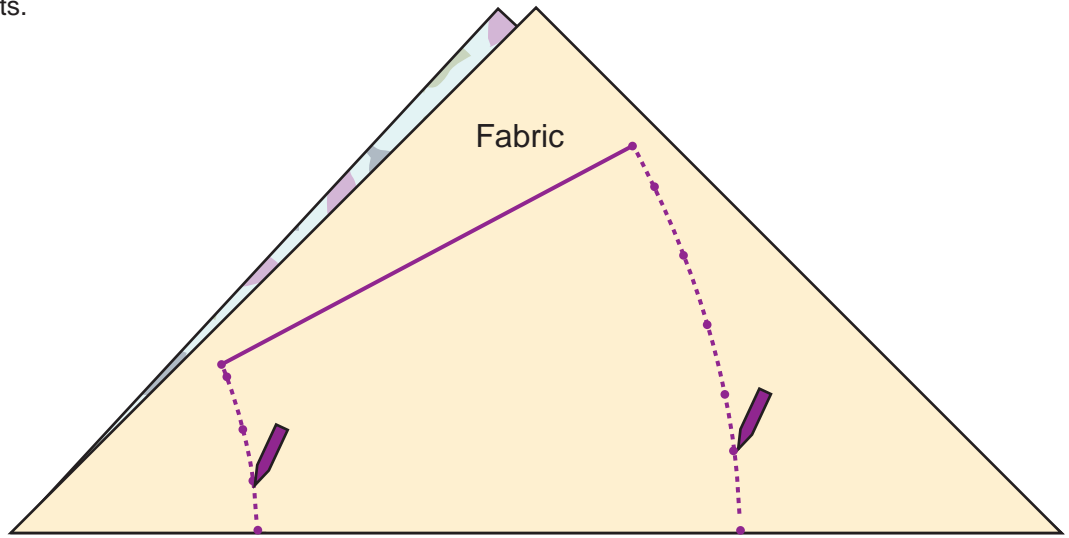
**(A)** Mark dots through all the holes along both 20" swag drop curves.

**(B)** Trace along this edge.

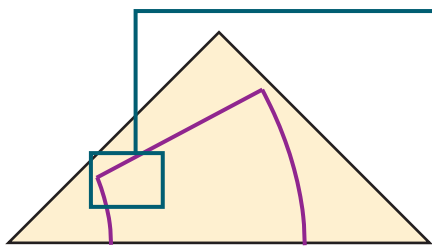
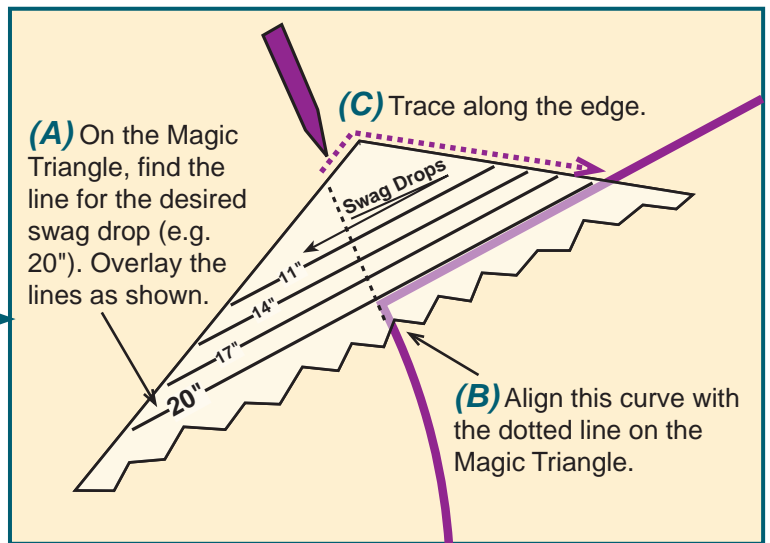
**(C)** Remove the template, pattern is now traced on the fabric.



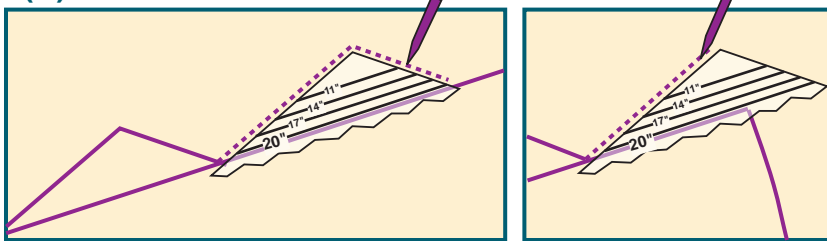
**Step 5.** Connect all the dots.



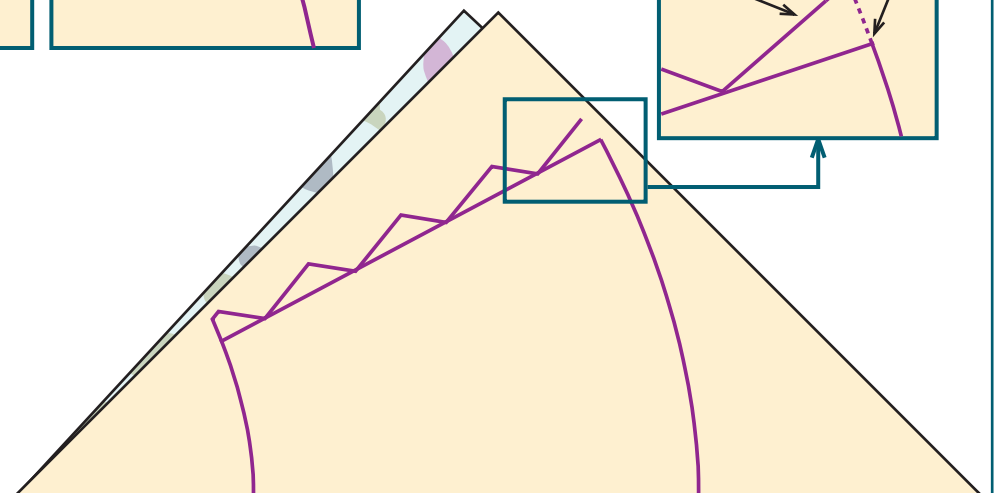
**Step 6.** Use only the 6-Pleat and Cutout Swag Magic Triangle to draw the triangles as shown. The Triangles are color coded with the Template. If swag width on the template is in red print, use the red print side of the triangle (e.g. For a 20" drop, 38" width swag, 38" is printed in black on the template, so use black print side of the Magic Triangle). Please note all the numbers on the Magic Triangle are swag drops.



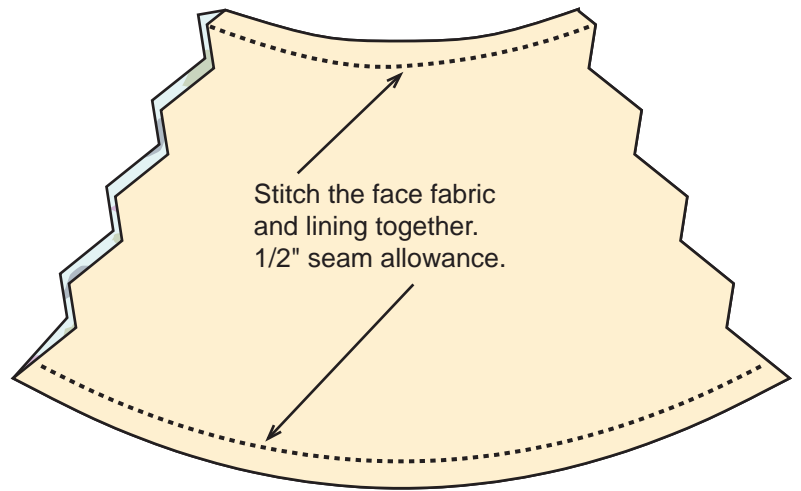
**(D)** Continue on.



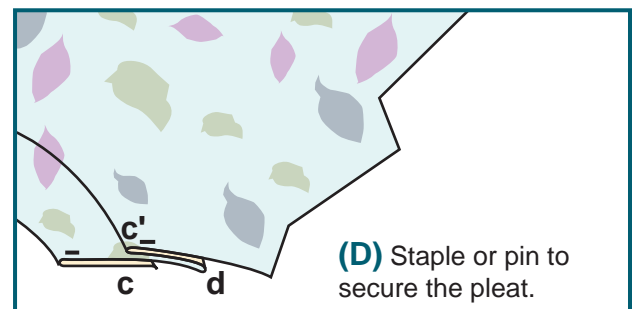
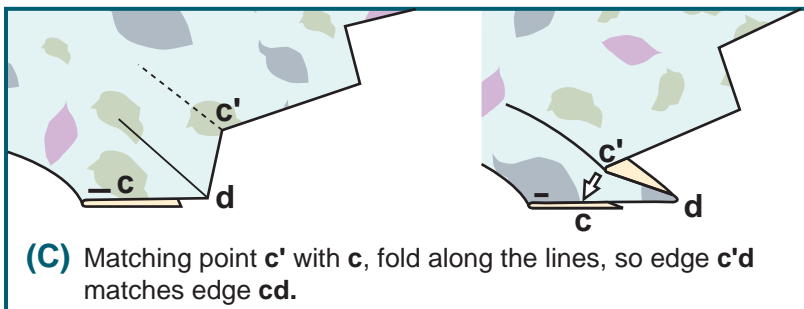
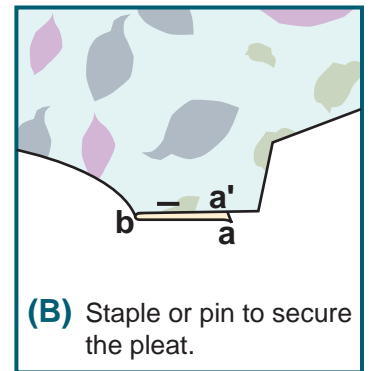
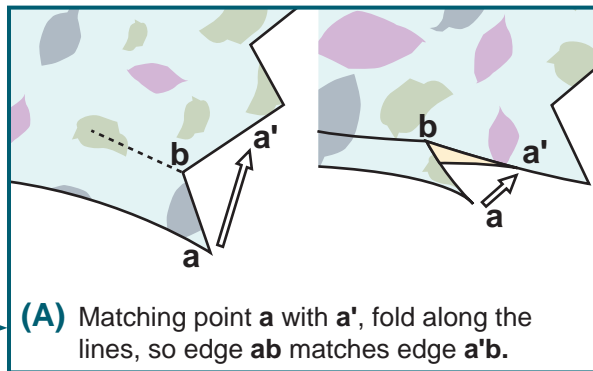
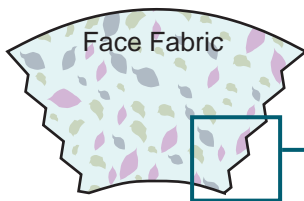
**(E)** Extend these two lines to meet at one point



**Step 7.** Cut fabric. Unfold. Stitch the face fabric and lining together along the curved edges. Turn right sides out. Press.



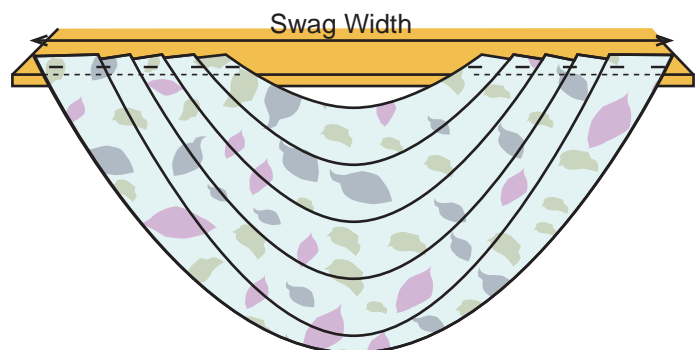
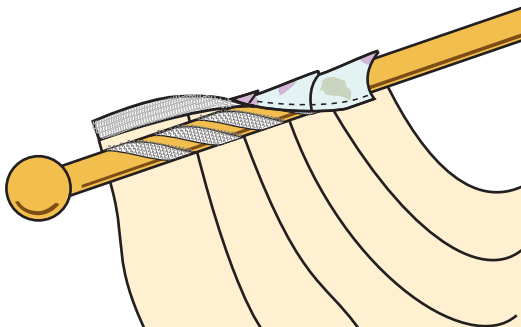
**Step 8.** Lay swag, face fabric side up, on worktable. Fold pleats and pin or staple the swag as shown. Repeat folding and pinning on both sides.



**Step 9.** Stitch across the top to hold all the pleats. Staple the swag to a mounting board. Dress the pleats into round folds. Work on the top pleat first. Pleat by pleat, progress to the outer ones.

**Or**

Sew a strip of loop tape (our Stock #: **LT100**) to the back side of the swag and attach it to a pole spiral wrapped with hook tape (our Stock#: **HPS100**).



**Table 1 Yardage Requirement for One Bias Cut Swag Using 54" Width Fabrics**

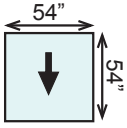
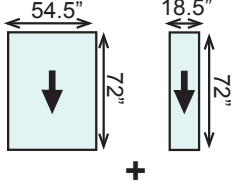
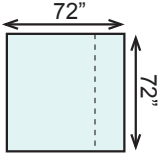
| For Traditional Swags: |       |            |       |            |       |                    |            |            |      |            |      |            |      |
|------------------------|-------|------------|-------|------------|-------|--------------------|------------|------------|------|------------|------|------------|------|
| Swag Drop              |       |            |       |            |       |                    |            |            |      |            |      |            |      |
| 11"                    |       | 14"        |       | 17"        |       | 20"                |            | 23"        |      | 26"        |      | 29"        |      |
| Swag Width             | Yds.  | Swag Width | Yds.  | Swag Width | Yds.  | Swag Width         | Yds.       | Swag Width | Yds. | Swag Width | Yds. | Swag Width | Yds. |
| 20"-30"                | 1 1/2 | 24"-38"    | 1 1/2 | 28"-44"    | 1 1/2 | 32"-38"<br>40"-52" | 1 1/2<br>4 | 36"-58"    | 4    | 42"-60"    | 4    | 46"-54"    | 4    |

| For Cut Out Swags: |       |            |       |            |       |                    |            |                    |            |            |      |            |      |
|--------------------|-------|------------|-------|------------|-------|--------------------|------------|--------------------|------------|------------|------|------------|------|
| Swag Drop          |       |            |       |            |       |                    |            |                    |            |            |      |            |      |
| 11"                |       | 14"        |       | 17"        |       | 20"                |            | 23"                |            | 26"        |      | 29"        |      |
| Swag Width         | Yds.  | Swag Width | Yds.  | Swag Width | Yds.  | Swag Width         | Yds.       | Swag Width         | Yds.       | Swag Width | Yds. | Swag Width | Yds. |
| 20"-30"            | 1 1/2 | 24"-38"    | 1 1/2 | 28"-44"    | 1 1/2 | 32"-48"<br>46"-52" | 1 1/2<br>4 | 36"-40"<br>42"-58" | 1 1/2<br>4 | 42"-60"    | 4    | 46"-60"    | 4    |

**Note:** This table is based on solid color fabrics. You will need extra yardage if pattern matching is necessary.

**Table 2 How to Prepare a Square of Fabric with 54" Width Fabric**

|              | If the yardage requirement found in Table 1 is:                                     |  |
|--------------|---|--|
|              | 1 1/2   | 4  |
| <b>Cut:</b>  |  |  |
| <b>Seam:</b> | No seam required  |   |

**Note:**

- 1) ↓ indicates the direction fabric comes off the bolt.
- 2) 1/2" for seam allowance.
- 3) Dotted line indicates the seam.

