

Safety, Operation & Maintenance Instructions

Long & Short Nose Upholstery Air Stapler (NS13LN & NS13)

IMPORTANT:

Drop 1-2 drops of oil into the stapler air inlet **BEFORE** first use. See page 3.

Please read the safety, operation and maintenance instructions **BEFORE** using the Air Stapler.

IMPORTANT:

This manual contains safety warnings, operation, maintenance, parts lists and diagrams. Keep the manual in a safe place for future reference. The instructions will help you maximize the service life of your stapler.



APPLICATIONS:

- For upholstery: cornice boards, head boards, sofas, chairs, ottomans, upholstered walls, etc.
- For Window treatment: covering dust boards, mounting soft treatments to dust boards, etc.

SAFETY INSTRUCTIONS:

1. Please read the instruction carefully before use.
2. Always wear ear and eye protector.
3. Do not exceed the maximum operating air pressure of 110 psi (or 8kGf/sqcm).
4. Always disconnect the tool from the air supply before loading staples, clearing a jam or servicing.
5. Always disconnect the tool from the air supply when not in operation. Never leave tool unattended while connected to air supply.
6. Do not point the tool at yourself or at any person.
7. Do not use oxygen, flammable gas, or any other type of gas as a power source. Use regulated and filtered compressed air only.
8. Keep hands, or any body parts away from the stapler nose area when the tool is connected to the compressed air.
9. Keep tool out of reach of children.

SPECIFICATIONS:

- Operating Power: Compressed air with pressure: 60 ~100 psi. equipped with filter.
- Hose length should be no greater than 16 ft (or 5M).
- Keep all parts clean, dry, no debris, no air leaking.
- Fastener type: 22 gauge fine wire 71 series staples.
- **NS13** and **NS13LN** staplers use the same fasteners Rowley Company sells (Item #s: **NS32/E**, **NS33/E**, **NS34/E**, **NS35/E**).

OPERATION INSTRUCTIONS:

STEP 1. Load Staples

- Disconnect stapler from air supply.
- Turn upside down. Depress the magazine lever (Fig. 1) and pull open magazine slide (Fig. 2).
- Drop in a strip of staples with staple legs pointing up (Fig. 2).
- Push the magazine slide forward until magazine lever catches securely (Fig. 3).

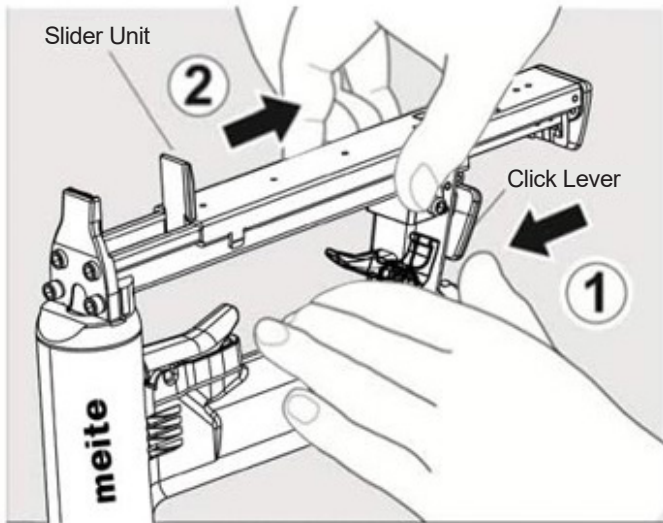


Fig. 1

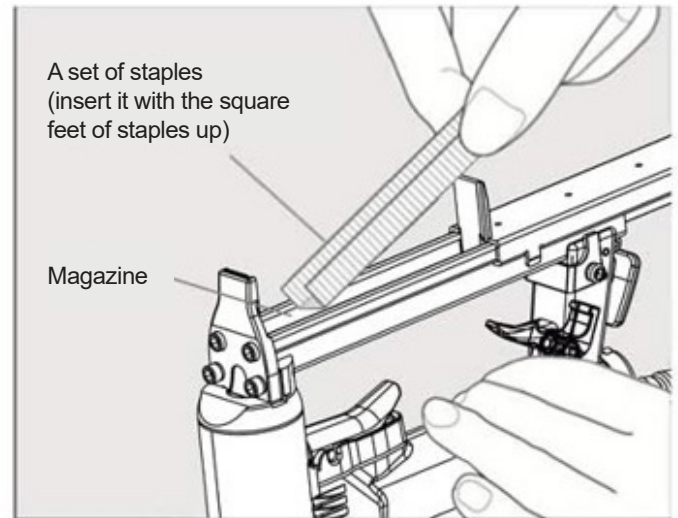


Fig. 2

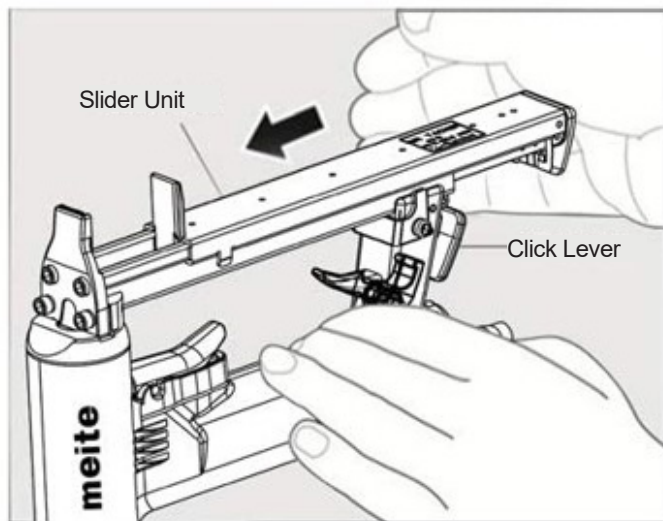


Fig. 3

OPERATION INSTRUCTIONS (cont.):

STEP 2. Shooting Staples

- CAUTION: Always wear safety glasses and ear plugs.
- Connect the stapler to the air supply.
- Regulate air pressure to 70 psi.
- Keep the drive guide downward and stick against the object before pulling the trigger.
- If staples do not penetrate deep enough, especially when stapling into hardwood or if stapler misfires occasionally, or the piston does not return to full up position at the end of cycle, the air pressure may be too low. Adjust regulator to increase air pressure gradually and try again.
- WARNING: Do not exceed maximum operating pressure of 100 psi.
- After use, always disconnect stapler from air supply and unload the staples.

STEP 3. Maintenance

- Stapler requires lubrication before each use. Disconnect stapler from air supply. Drop 1-2 drops of oil into the air inlet. Wipe off excess.
- If tool is not working properly, contact customer service for repair.

Limited Warranty

- 90 days warranty period from the date of purchase.
- The warranty covers material and workmanship defects of the Long and Short Nose Upholstery Stapler sold by Rowley Co. only.
- During the warranty period, replacements or repairs (at Rowley Co.'s discretion) of the tool will be made free of charge.
- The warranty does not cover damages by accident, misuse or due to using staples not recommended by Rowley Co. Unauthorized repair or modification of the tool will void the warranty.
- After warranty period expires, customers can still receive repair services from Rowley Co. The customer will be charged the labor and parts cost.
- To receive the repairs or replacements under warranty or to obtain repair services after warranty period expires, the tool must be returned to Rowley Co. at the customer's expense.
- The user of the tool must read and understand the safety, operation, and instructions. Rowley Co. is not liable for any personal injuries or material damages associated directly or indirectly with using this tool.

