

Building and Upholstering a Seating Cube

Materials and Supplies:

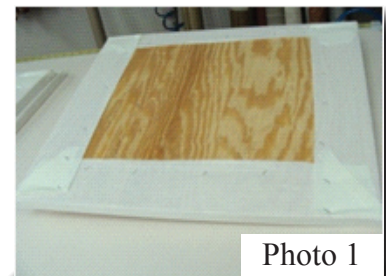
Items	Rowley Item#
¾" plywood	
Saw to cut plywood	
Screw Gun	
Wood Screws	
Wood Glue	
2" medium density foam	
Contact Spray Adhesive	AS30
Polyester Quilt Batting	PF66,PF72 OR PF76
Upholstery Thread	TU6K
Curved Needle	SG01 OR SG02
Safety Glasses	G20S/
Gimp	
Furniture leg pads	



NOTE: This sample finishes out at 18" cubed (18x18x18).

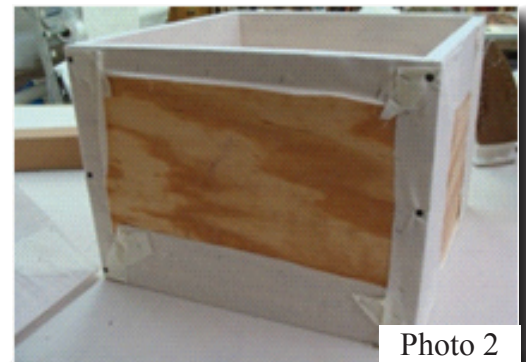
Step-by-Step: Preparing the Base:

1. Cut the Plywood pieces:
 - a. Cut 1 piece measuring 18x18 for the top of the cube.
 - b. Cut 2 pieces measuring 16Hx18W for two sides
 - c. Cut 2 pieces measuring 16Hx16.5W for the other two sides.
2. Lightly sand all pieces, if applicable.



Prepping the Cube

3. Pre-cover the four sides and the top, individually, by wrapping and stapling each piece, making sure the fabric comes over the side edges to the outside (Photo 1). No raw edges should show on the inside of the cube.
4. Build the sides of the cube by attaching the four sides to the top piece (Photo 2).
 - a. The 16x18 pieces will run full side to side, while the 16x16.5 pieces will sit inside of the others.
 - b. You will need to screw the sides to the top and to each other. Be sure the frame is square as you are screwing it together.



5. Cut the foam for the top of the cube $\frac{1}{2}$ " larger, all the way around. Center the foam on the top. Using the Spray Adhesive, glue the foam to the wood (Photo 3). Wrap the foam and the cube in Batting, eliminating bulk at the corners (Photo 4-5).

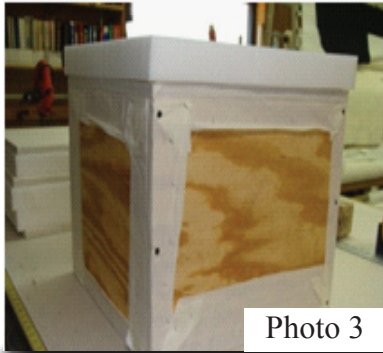


Photo 3



Photo 4



Photo 5

- a. Using Upholstery Thread and a Curved Needle, hand close the sides of the Batting using a running stitch.
- Bunny- loop the end of the double thread with a knot, leaving room for the needle to pass through the loop (photo 6).
 - Insert needle into both sides of the batting and back through the loop (Photo 7). Pull tight.
 - Complete the rest of the attachment with a running stitch, pulling only tight enough to leave the two pieces lay next to each other, not puckered (Photo 8).
 - At the end of the stitch, double wrap the needle and pull tight on the thread. This will knot the end of the thread for you (Photo 9).

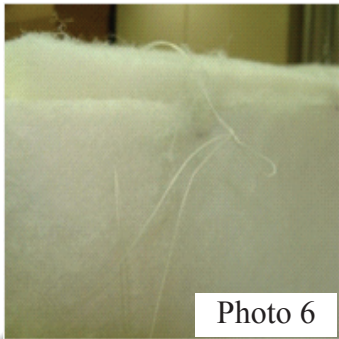


Photo 6

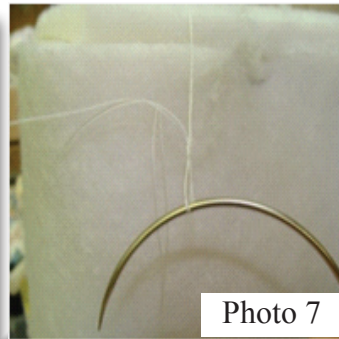


Photo 7

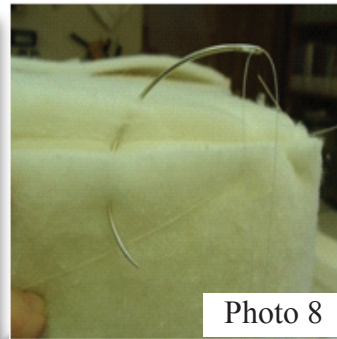


Photo 8

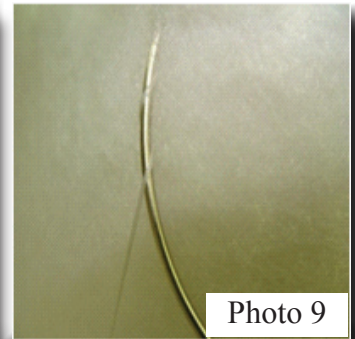


Photo 9

6. Prepare the fabric to wrap the outside of the cube. Be sure to add to the length for stapling onto the bottom.
- Either cut four pieces for the sides and sew them together or cut one long piece. Remember to add seam allowances.
 - Cut the piece for the top. Remember to add seam allowances.
 - The side(s) piece and the top piece should be sewn together and pulled over the cube as one piece.

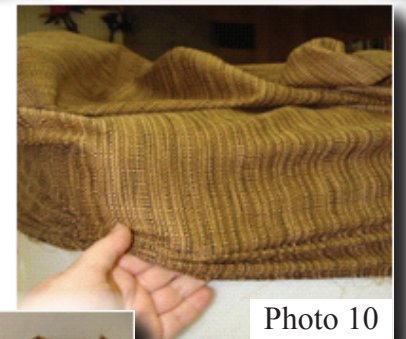


Photo 10

7. Pull the face fabric onto the cube, positioning it so that the seam(s) fall at the corner(s) (Photo 10). Staple fabric to the inside of the cube (Photo 11). Trim.



Photo 11

8. Cover the staple line with gimp (Photo 12).

9. Add the furniture leg pads to the bottom of each corner (Photo 13).



Photo 12



Photo 13