

Rowley project list: Upholstered Lamp – Custom Diaper Stacker – Cuddly Blanket

Add-on sales can cover a range of accessories when customizing a Nursery. Upholstering a lamp base and shade, creating a stylish diaper stacker and a cuddly blanket can tie all of the fabrics in the room together, elevating the overall custom design.

MATERIALS & SUPPLIES

Rowley Products

R-TEC Upholstery Air Stapler – Long Nose
 71 Series Staples - $\frac{3}{8}$ "
 Gimp Trim
 High Temperature Glue Gun
 High Temperature Glue Sticks
 Upholstery Nails
 Magnetic Tack Hammer with Nylon Tip
 Roc-Lon Budget Blackout Lining
 Spray Adhesive
 R-TEX Micro Welt Cord
 Fringe Adhesive
 Polyester Iron-On Batting
 Glass Head Straight Pins
 Scissors
 R-TEX Polyester Welt Cord - $\frac{1}{4}$ "
 John James Hand Sewing Needles
 A&E Upholstery Thread
 FirmaFlex™

SKU

[NSG10](#)
[NS33/E](#)
[G22S/](#)
[DT50](#)
[DT55](#)
[UN20/](#)
[MH12](#)
[LN20/](#)
[AS30](#)
[WC85](#)
[FA10](#)
[PA20/](#)
[TP49](#)
[CU22](#)
[WCP2/](#)
[TP110](#)
[TU6K/](#)
[BP48/](#)



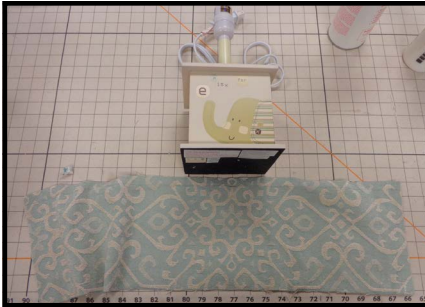
UPHOLSTERED LAMP – CUSTOM DIAPER STACKER – CUDDLY BLANKET: STEP-BY-STEP INSTRUCTIONS

This project guide covers the steps to upholster a lamp base with designer details, and cover a lamp shade to coordinate. Along with steps on how to make a diaper stacker that you will never find in a retail store, it covers the steps to complete a wonderfully soft and cuddly nap time blanket.

Upholstered Lamp:

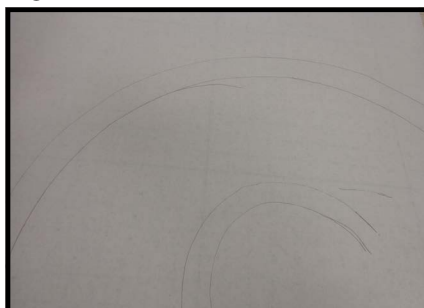
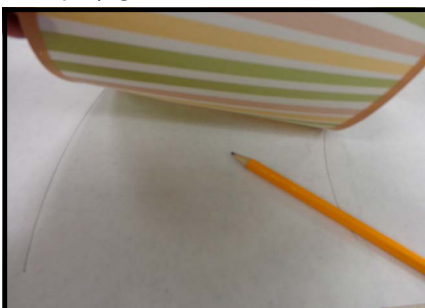
Covering the Base:

- 1 Cut a piece of face fabric as tall as the base area to be covered, plus 2" x the circumference of the base plus 2".
- 2 Fold under the top edge 1" and top staple to the frame, keeping the staple at the top ½" and angled.
- 3 Fold under the bottom edge and do the same stapling, working your way around the base.
- 4 At the back, cut away an opening for the cords, if applicable.
- 5 Turn under the final raw edge and staple at the top and bottom only.
- 6 Glue on a row of decorative gimp over the staples at the top and bottom.
- 7 Add a decorative nail in the center of the three sides to add interest.

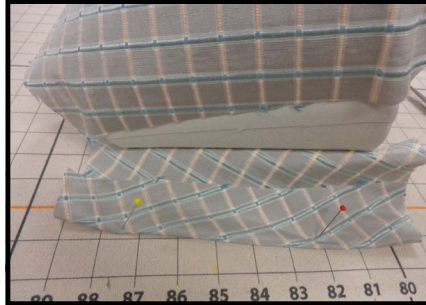
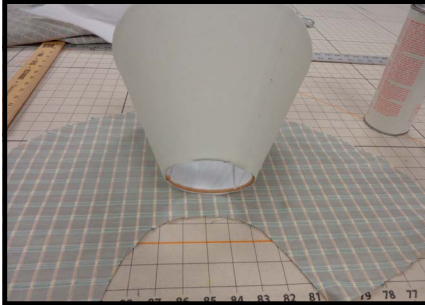


Covering the Lamp Shade:

- 1 Make a pattern for the shade by rolling the shade along a large piece of paper.
- 2 Cut out the pattern, cutting longer on the top and bottom for tucks.
- 3 If the original shade fabric will bleed through your fabric once lit, cut a piece of black-out lining the same size as the shade and spray-glue it to the shade before adding fabric.



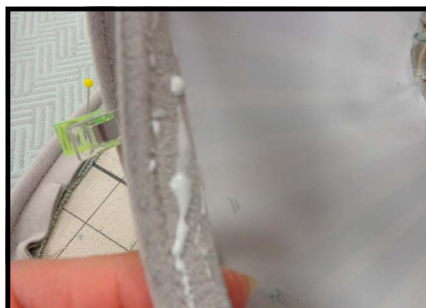
- 4 From the pattern, cut the face fabric.
- 5 Spraying a small area at a time, apply the fabric to the shade.
- 6 At the joining seam, fold under raw edges and glue.



- 7 At the top and the bottom, trim fabric to 1". Make small relief cuts so the fabric will fold over the frame. Glue to secure.



- 8 Cut and make enough micro-welt cord to go around the top and bottom of the shade.
- 9 Trim the seam of the welt cord to 1/4" and glue to top and bottom of shade, butting ends and clipping in place until dry.



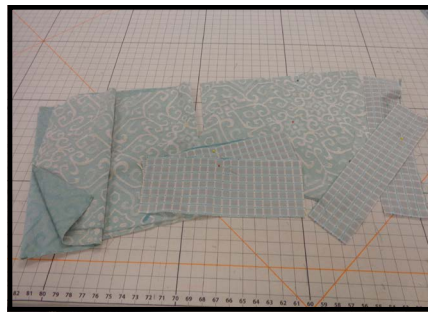
- 10 Add a row of decorative gimp to help hide raw edges.



Custom Diaper Stacker:

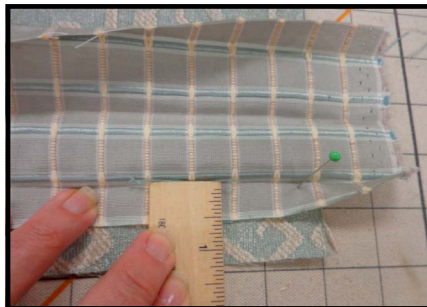
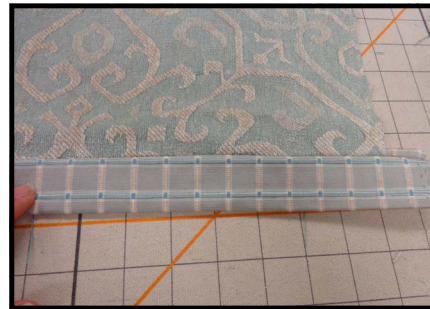
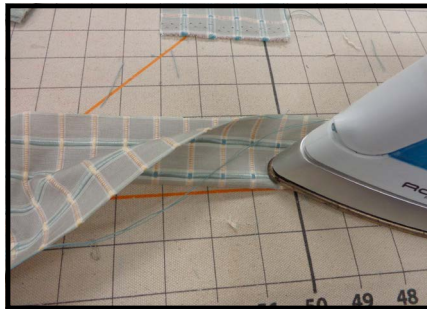
Cutting and Preparing the Pieces:

- 1** Start with a plan and then figure your cuts for each fabric.
 - A.** Our project is self-lined but you could use a thinner, coordinating fabric.
 - B.** We used one fabric on the bottom, a second fabric for the top, a third fabric for banding detail and a fourth for welt cord detail.
- 2** Cut the pieces needed: face (1) - face fabric, bottom (1) - face fabric, a piece to wrap around the FirmaFlex™ bottom - face fabric, Lining (1) - lining fabric, decorative front bands (2) - coordinating fabric, top bands (2) - coordinating fabric, and welt cord.



Making the Bottom:

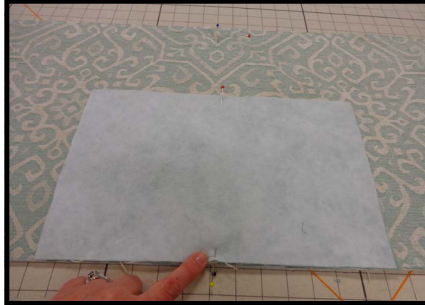
- 1** On the two decorative front band pieces, fold in half lengthwise and iron. Also iron in seam allowance along both long sides.
- 2** Place bands on the outside (short) edges of the face and sew.
 - A.** Do not fold to the back yet.



3 Iron on a layer of Iron-On Batting to the Bottom and to the face piece.

4 Align the bottom to the center of the face.

A. Sew the bottom to the face at that seam only.



5 Turn wrong sides out and attach the lining so when it is turned right sides out the face side shows on the inside.

A. Sew in the original seam allowance.

B. There will be no bottom piece for the lining.

C. At the bottom seam, sew within the seam allowance to attach.

6 Pull all tops so they are even and align the front to the back to mark for side pleats.

7 Hand close decorative band edges.



8 Mark and sew in side pleats.

A. Pleats will fall to the inside.

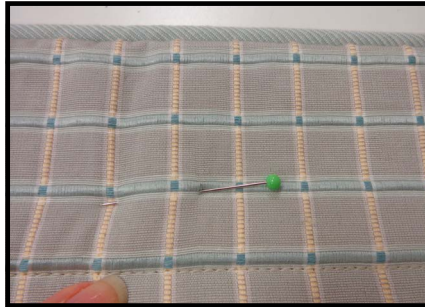
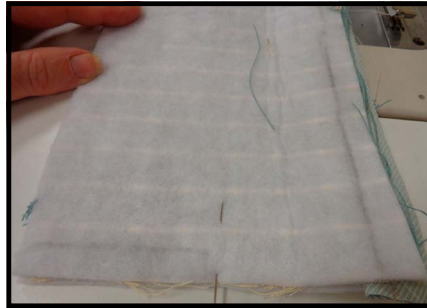
9 Fold pleats to the back.

10 Sew through all layers, across the top to secure.



Making the Top:

- 1 Iron on a layer of Iron-On Batting to both the front and back.
- 2 Sew a line of welt cord to the top of the front, cutting cord away from the casing at the side seams.
- 3 Mark for rod pocket seam.
- 4 For the sides of the rod pocket, fold under raw edges and top stitch.
- 5 Re-fold so it is wrong sides out and complete the side seams, sewing from the rod pocket down.
- 6 Turn right sides out and top stitch rod pocket seam.



Finishing the Stacker:

- 1 On the front sides, place right side of top to right side of bottom. Sew.
- 2 Flip top over raw edges of bottom, turn under seam allowance and hand close.



- 3 Cut a piece of FirmaFlex™ slightly smaller than the true bottom.
- 4 Cover by wrapping and stapling face fabric to the top.
- 5 Slip inside of stacker and press so it sits flush within the seam allowances.



Making a Cuddly Blanket:

Our blanket finished out at 30" x 42" and has a thin layer of batting as padding.

- 1 Cut the face fabric and back fabric 32" x 44" to allow for take-up once the batting is added.
- 2 Cut a thin layer of batting the finished length and width of the blanket.
- 3 Apply trim to the face, if applicable.
- 4 Place front and back right sides together, tucking in trim, if needed.
- 5 Sew around outsides, leaving an opening for turning.
- 6 Place the thin layer of batting on top of the wrong sides out blanket and attach to the seam allowances.

- 7** Turn blanket right side out and close the opening.
- 8** Make small tacks, through all layers, to hold all layers together.

