

Rowley project list: **Kitchen Seat - Wrap & Staple**

Re-covering a removable seat is an easy and fast way to update a chair. This is a technique anyone can do – whether you’ve ever upholstered anything before or not!



MATERIALS & SUPPLIES

Rowley Products
5 oz. Polyester Batting
Black Cambric
Fabric Stapler
Fabric Stapler Staples

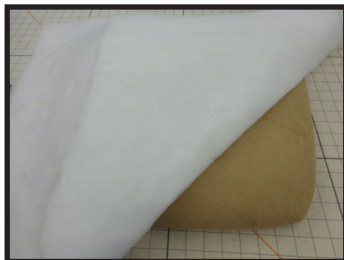
SKU
[PF72](#)
[PA40/](#)
[WW70](#)
[WW71](#)

KITCHEN SEAT - WRAP & STAPLE: STEP-BY-STEP INSTRUCTIONS

This project guide covers how to wrap & staple a removable seat. It does not show steps for adding welt cord detail, but if you wanted to add a row of decorative welt, simply staple it on before you staple on the Cambric.

Cutting and Prepping the Fabric:

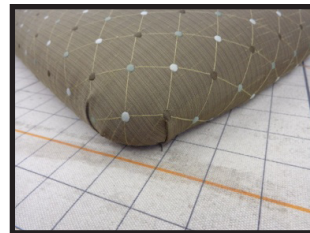
- 1** Remove the chair from the frame by unscrewing the seat from underneath.
- 2** Remove the old fabric by removing the old Cambric and then the staples holding the original fabric in place.
- 3** If the base padding (foam) is in good shape, just add a new layer of polyester batting; if the foam is not in good shape, replace it, then add a layer of batting.
 - A.** At the corners, do not fold the batting – ease the extra around the corner and staple. Cut off any excess.



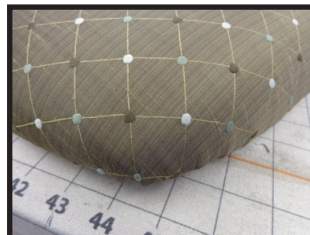
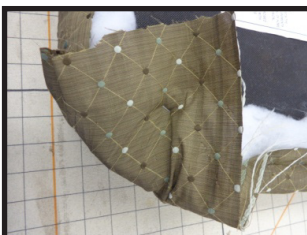
- 4** Position the new fabric over the top of the seat, aligning patterns as needed.
- 5** Holding the fabric in place, gently flip the seat over to expose the back.
- 6** Staple the back of the seat to hold the pattern placement, stopping about 3" from the edges.
- 7** Staple the front of the seat, stopping about 3" from the edges.
- 8** Staple one side and then the other side, again, stopping about 3" from the edges.



- 9** At the corners, decide what you want the corner to look like: pleated or smooth.
- 10** For a pleated look, where small folds will show to the front, pull the fabric tight around the corner and staple on the back.
 - A.** Fold in pleats on either side of the first staple.
 - B.** Be sure to match the right side of the seat to the left side of the seat.



- 11** For a smooth look, where no folds will show on the front, staple the middle first and then ease in the remaining fabric, folding small areas at a time.
 - A.** Place staples next to each other, not on top of each other, to minimize bulk.



- 12** Complete all four corners using the same method.
- 13** Cut two pieces of Cambric: one piece just large enough to cover the seat bottom that is not covered by fabric and the second piece slightly larger than the seat bottom.
- A.** Position the smaller piece over the exposed area on the seat bottom. Top staple in place.
 - B.** With the larger piece, tuck under the raw edges and staple to the seat bottom, staying at least ½" in from the edges.
- 14** If you have required labels to attach, staple them on now.

