

### Relaxed Roman Shade with an Arched Top

While flat shades are probably the most fabricated shade, doing one with an arched top is a bit more challenging. This shade has ribs to keep the width consistent and an arched top to fill our arched window. Explore this shade fabrication and what lift systems it can work on.



### Relaxed Roman Shade with an Arched Top: Step-By-Step Instructions

Our project covers the steps to make a basic relaxed shade with ribs and an arched top. It will be installed using Right Angle Hook Strip. Our shade was made of a striped sheer and finished at 58" W x 90" L with two permanent folds at the bottom.

### Materials & Supplies

#### Rowley Products

- Professional Shears / Scissors
- John James Hand Sewing Needles
- A&E Upholstery Thread
- Straight Edge Ruler, 72"
- Sure-Shade Encased Lift Cord Tube
- Glass Head Straight Pins
- Metal Sew-On Rings
- Cord Adjuster Orb
- Skirtex Stiffener
- Spray Adhesive
- Buckingham Blackout Lining
- Gimp Trim
- R-TEX Sew-On Hook & Loop
- Fringe Adhesive
- Solid Steel Rods
- Fabric Tubing for 3/8" Steel Rods
- Split Rings
- R-TEX Right Angle Hook Strip
- Standard Angle Irons
- Hex Head Slotted Screws

#### Item #

- [CU22](#)
- [TP118](#)
- [TU6K/](#)
- [MR26](#)
- [ELK14/](#)
- [TP49](#)
- [ST16](#)
- [RW19](#)
- [SKX55/](#)
- [AS30](#)
- [LNW26/](#)
- [G22L/](#)
- [LT100/](#)
- [FA30](#)
- [BR6/](#)
- [RSR5/](#)
- [ST13](#)
- [HS225/](#)
- [AG30/](#)
- [HH850 &](#)
- [HH8200](#)

## Doing the Math:

- 1 Do the math for your shade:
  - A. How long will your apron be and will it show?
  - B. How are you mounting?
  - C. How wide is the finished shade?
  - D. How wide will your side hems be?
  - E. What lift material are you going to use?
  - F. How many rows of lift will you need?
  - G. Are you doing permanent folds at the bottom?
- 2 Figure out your cut length (CL) and cut width (CW) for your project.
  - A. Our shade finished at 58" wide x 90" long with the apron hidden.
    - i. CW was 66" (58" + 8" side hems); CL was 120" (2" mount + 92" + 16" two permanent bottom folds) + 12" (apron and bottom hem).

## Preparing the Face:

- 1 Cut face material to width x cut length, making sure stripes are running straight up the table and the pattern is centered.
- 2 On both long sides, turn in double 2" side hems.
- 3 Press well.
- 4 Close side hems using your preferred method.



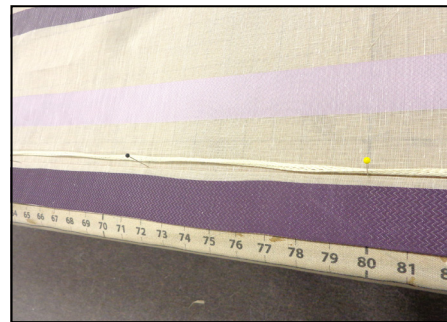
- 5 At the bottom, turn up a double 4" bottom hem.
- 6 Press well.
- 7 Cut a strip of black out lining the width of the finished shade x the depth of the hem – 1/8".
- 8 Unfold hem and lay in black out lining strip.
- 9 Refold hem.

- 10 Pin or staple at the very top of the hem but do not close yet.



## Adding the Lift Material:

- 1 Cut two lengths of lift material the cut length of the shade + 10".
- 2 On the back of the shade, mark the two side hems for lift material placement.
  - A. Starting at the top of the hem, measure up 8" all the way up both sides and in from the edge about 1/2".
  - B. Mark each location.
- 3 At the top of the hem and for the first two marks, sew on a shade ring for each mark.
  - A. You will have a total of 6 rings for this shade.
- 4 At the next mark and all other marks, attach lift material to marks.
  - A. If using lift tube, pull cord from tube at first attachment location and tie empty tube to third ring.
  - B. If using lift tape, pull cord from tape, turn under raw edges and attach tape to shade just above the third ring.
- 5 At the top of each row of lift, pull cord from shroud and run empty shroud up the back of the shade.



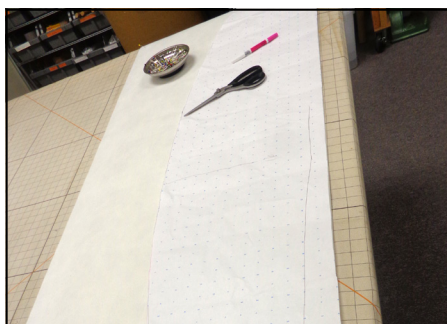
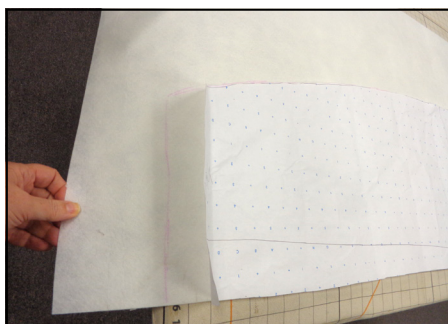
## Making the Arch:

- 1 Make a template of the arched window.
  - A. Be sure to mark where the first horizontal mullion comes on the window – this will be the bottom of your template.
- 2 Cut a piece of Skirtex, larger than the template, and steam to flatten.
- 3 Lay template on Skirtex.

4

Trace around shape and cut out.

A. Do not throw your template away – you will use it again for the black-out lining.



5

Lay template on the back of the shade so the top of the template is at the finished length.

A. Do not forget to measure from the third ring up for the finished length.

6

Lightly spray-glue template to shade.

7

Fold over top of fabric around the arched side.

8

Spray-glue fabric to back of Skirtex.

9

From the template, cut a piece of Black-Out Lining the same size but 1" shorter on the arch.

10

Place black-out of top of Skirtex, aligning the bottoms.

11

Spray-glue in place.

12

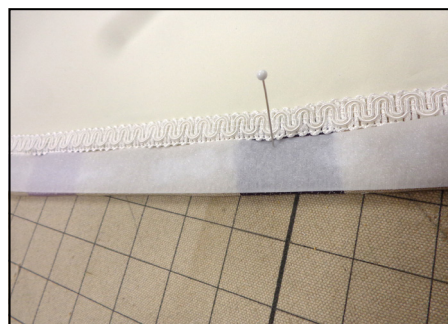
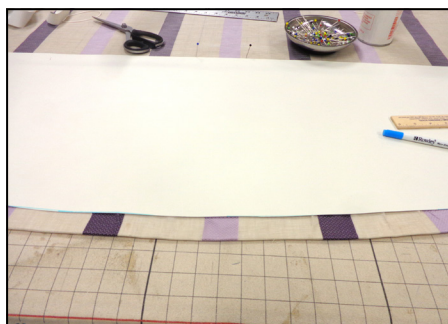
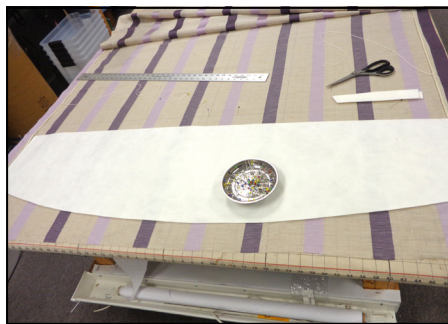
Glue a row of gimp over the raw edge of the black-out lining at the arch.

13

Place a row of loop tape between the top of the arch and the gimp.

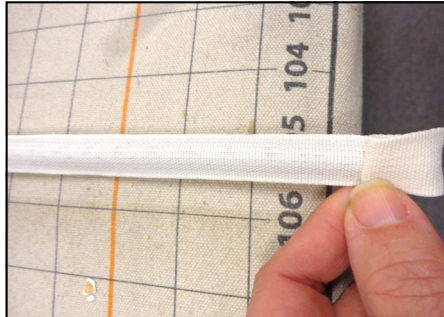
14

Sew loop tape to shade.



## Covering the Weight Bar:

- 1 Cut a length of weight bar to FW of shade - 1".
- 2 Cut a length of weight bar cover to FW of shade + 2".
- 3 Slip weight bar into cover.
- 4 Fold over ends to conceal raw edges and hand close.
- 5 Sew covered weight bar to shade at the bottom rings.



## Finishing the Shade:

- 1 Attach the three bottom rings together using a split ring.



- 2 Cover a dust board with lining.
- 3 Staple shade to dust board carefully stapling through the front to the side of the board.
  - A. You will be carefully moving the very bottom of the black-out lining and Skirtex out of the way to staple on the dust board. Replace these once finished to cover your staples.
- 4 Attach your preferred lift system to the dust board.

## Mounting the Shade:

- 1 Install Right Angle brackets to the side of the window at the height needed.
- 2 Install Right Angle Hook Strip into arch of window.

3 Place dust board on top of brackets and screw together.

4 Pressure-fit top of shade to hook strip.

