

### Flat Shade with Ribbs

Flat shades have a permanent fold at the bottom but stay mostly flat whether raised or lowered. Discover how to fabricate this simple shade plus tips for rib calculation and placement.



### Materials & Supplies

#### Rowley Products

	Item #
Cambridge Napped Sateen Lining	<a href="#">LNW49/</a>
Iron-On Roman Rib Tape	<a href="#">RSR7/</a>
Plastic Roman Shade Ribbs	<a href="#">RSR2</a>
Professional Shears / Scissors	<a href="#">CU22</a>
John James Hand Sewing Needles	<a href="#">TP118</a>
A&E Upholstery Thread	<a href="#">TU6K/</a>
Straight Edge Ruler, 72"	<a href="#">MR26</a>
Sure-Shade Encased Lift Cord Tube	<a href="#">ELK14/</a>
Glass Head Straight Pins	<a href="#">TP49</a>
Metal Sew-On Rings	<a href="#">ST16</a>
Cord Adjuster Orb	<a href="#">RW19</a>
Solid Steel Rods	<a href="#">BR6/</a>
Skirtex Stiffener	<a href="#">SKX55/</a>

### Flat Shade with Ribbs: Step-By-Step Instructions

Our project covers the steps to make a basic flat shade with ribs finishing at 50" W x 90" L. Our lift starts 4" above the top of the apron so the entire apron will show once raised and has an 8" spacing between ribs.

#### Doing the Math:

- 1 Do the math for your shade:
  - A. How long will your apron be and will it show?
  - B. How many multiples of 8" (folds) will you need to cover your length?
  - C. How are you mounting?
  - D. How wide is the finished shade?
  - E. How wide will your side hems be?
  - F. What lift material are you going to use?
  - G. How many rows of lift will you need?

- 2 Figure out your cut length (CL) and cut width (CW) for your project
  - A. Our shade finished at 50" wide x 90" long with 4" of the apron showing.
    - i. CW was 56" (Finished Width (FW) + 6" for side hems).
    - ii. CL was 100" (Finished Length (FL) + 2" mount + 8" bottom hem).

## Preparing the Face and Lining:

- 1 Table fabric face down.
- 2 Cut face fabric to CW x CL.
- 3 Turn in double 1 ½" side hems.
- 4 Press well but do not close yet.
- 5 At the bottom, turn up and press in a double 4" bottom hem.

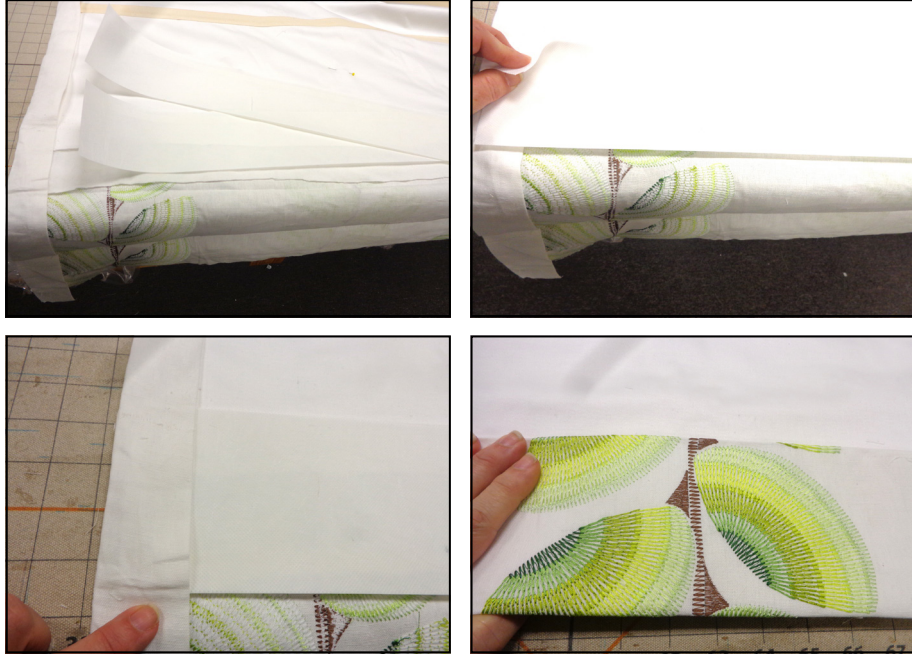


- 6 Cut lining to FW x FL.
- 7 Gently open side and bottom hems on the face fabric and lay in lining, face up.
- 8 Refold side and bottom hems but do not close.



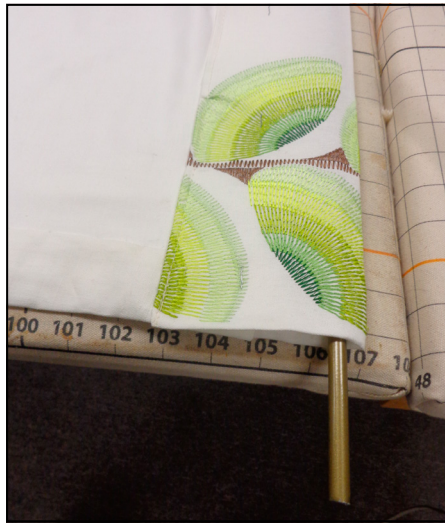
- 9 Cut a piece of Skirtex 2x the height of the bottom hem x FW of shade.
- 10 Fold Skirtex in half, lengthwise and finger press to crease.

- 11 Place folded Skirtex into bottom hem and refold.



- 12 Cut weight bar to FW - 1" and slip into hem.

- 13 Close hem and close side of bottom hems.

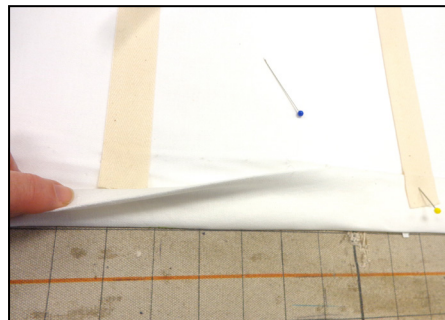


## Adding the Rib Tape and Ribs:

- 1 Decide on lift row placement.
- 2 Starting at the bottom, measure up 4" from the top of the bottom hem. Mark.
- 3 From that mark, measure up 8" and mark.
- 4 Complete measuring and marking, running up the shade, until you are 8" from the FL.

5 Cut widths of Iron-On Rib Tape to FW - 1".

6 Carefully lay tape, glue side down, on shade lining so the top of the tape is at your marks and the ends are tucked into the side hems.



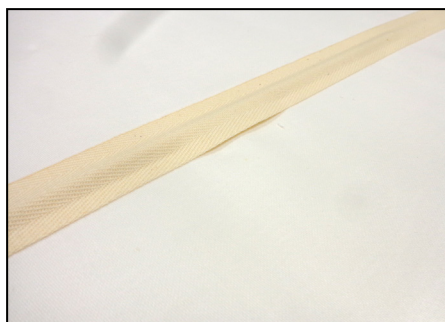
7 Open side hems.

8 Iron tape to melt the glue.

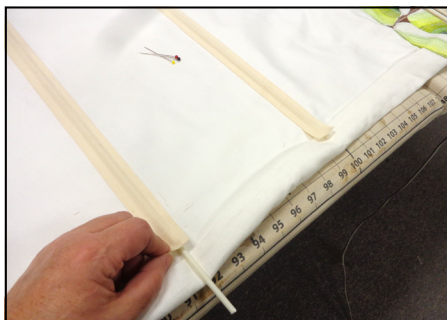
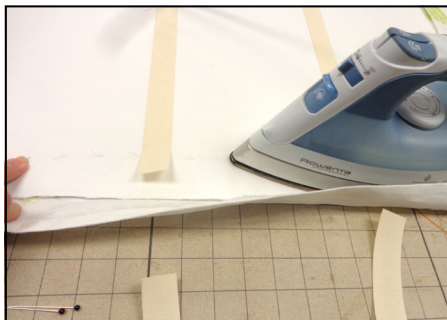
9 Cut a shade rib to FW - 1" for every row of rib tape.

10 Slide rib into tape.

A. If the tape lifts, remove rib and re-iron until it is completely glued down then re-insert rib.

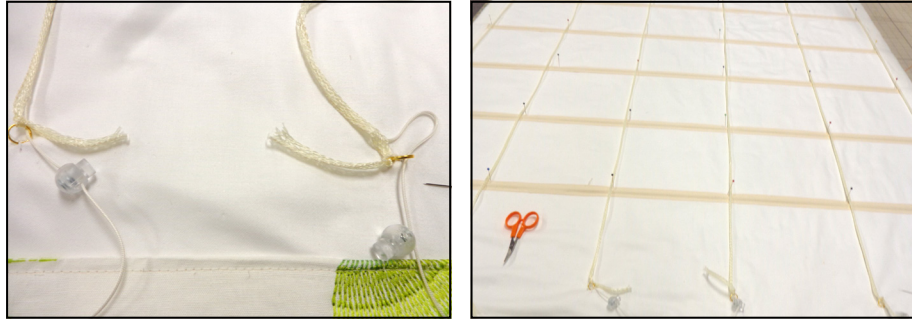


11 Refold and close side hem.



## Adding the Lift Material:

- 1 Cut lengths of lift material FL + 20".
- 2 At the first mark (the one 4" up from the bottom of the top of the bottom hem) sew on a shade ring for each row of lift.
- 3 Pull the cord from the shroud and run it through the shade ring and into an orb.
- 4 Tie the empty shroud around the shade ring and glue to secure.



- 5 Run the shroud up the shade at your lift row marks.
- 6 Sew shroud to shade, attaching it at the top of the rib tape, and sewing through all layers.
- 7 At the top-most tack point, sew on a shade ring, sewing through all layers.
- 8 Pull the cord from the shroud.
- 9 Tie the empty shroud to the shade ring and glue to secure.



## Mounting the Shade:

- 1 Measure and mark for finished length.
- 2 Iron to press in a crease.
- 3 Cut and cover dust board.
- 4 Staple fabric shade to lining covered mount board so the crease is at the front top corner.

5 Finish top of dust board as desired.

6 Add your lift system and string.

