

Materials & Supplies

Rowley Products

Polyester Batting
Jute Webbing
Jute Stretcher
R-TEC Upholstery Air Stapler
71 Series Staples - 3/8"
Utility Scissors
R-TEX Firm Double Welt Cord
High Temperature Glue Gun
High Temperature Glue Sticks
Fringe Adhesive
Magnetic Tack Hammer with Nylon Tip
Molded Tooth Zippers - #5
Molded Tooth Zipper Slides - #5
Handheld Drapery Steamer
Pen Style Chalk Marker
Upholstery Staple Remover
Extracting Pliers
R-TEX Black Cambric
Denim Deck Cover - Black

SKU

[PF76](#)
[CS32](#)
[MH24](#)
[NSG10](#)
[NS33/E](#)
[CU8/U](#)
[WC52](#)
[DT50](#)
[DT55](#)
[FA10](#)
[MH12](#)
[ETR52/](#)
[ETP5/](#)
[DS14](#)
[WW13/](#)
[MH22](#)
[MH40](#)
[PA40/](#)
[DK02/](#)

Other Materials Used:

Rolled Cotton
Burlap
Finishing Nails
4" Medium Density Foam
Hammer
Light duty sand paper
Wood filler (optional)
Primer, Paint and Sealer

Refinished Antique Chair with Contrast Welt Cord

Taking a worn out antique chair, refinishing it with a modern color and adding a textured velvet is a great way to modernize the design in an unexpected way.

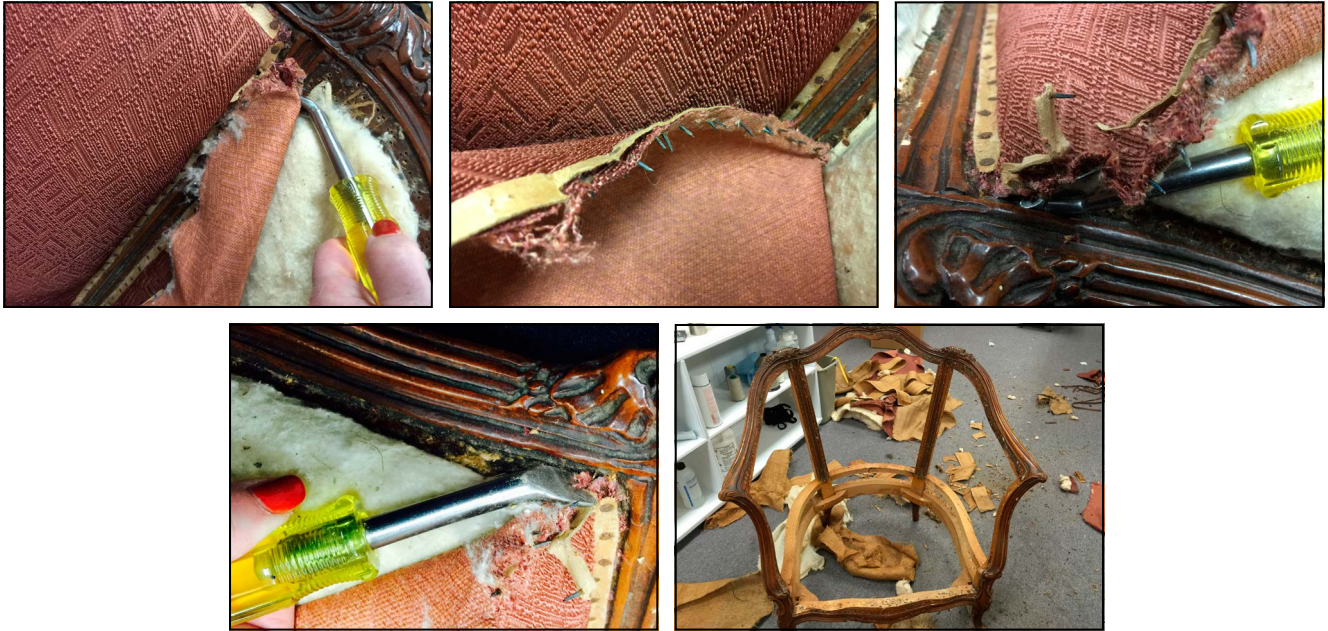


Refinished Antique Chair with Contrast Welt Cord: Step-By-Step Instructions

This how-to guide covers the steps to tear down, paint and reupholster, from the frame up, an antique chair.

Tearing Down the Chair:

- 1 Flip the chair over and take off the cambric from the bottom.
- 2 Due to the style of this chair, you can start the actual tear-down from any spot.
 - A. Pull off double welt trim.
 - B. Carefully remove staples.
 - C. Remove padding.
 - D. Remove webbing and springs.
 - E. Repeat until all fabric is off chair and all staples are removed.

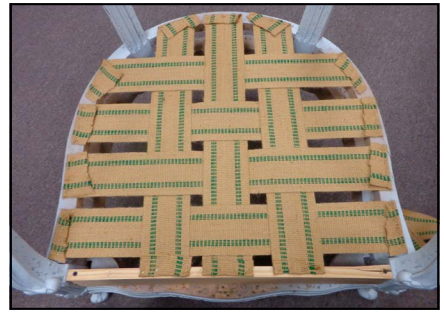
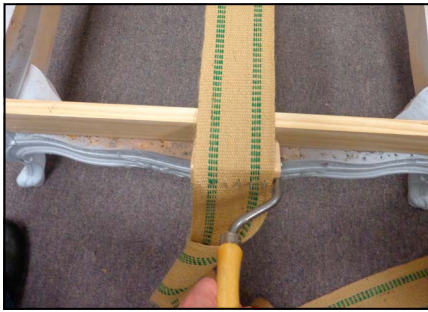


Prepping the Surface and Painting:

- 1 Lightly sand any rough areas from removing staples.
- 2 If you want a perfect finish, fill and sand any deep scratches / holes.
- 3 Spray a coat of primer on all exposed wood areas. Let dry.
- 4 Spray on color. Let dry.
- 5 Spray on sealer. Let dry.

Adding the Foundation:

- 1 With the chair on its legs, stretch webbing front to back, spacing about 1" apart, on the top of the seat frame. Staple.
 - A. If you plan to add springs you need to web the bottom of the seat frame to leave room for the springs.
- 2 Complete all front to back rows.
- 3 Stretch and staple side to side rows, weaving them under and over the front to back rows.
- 4 Complete all side to side rows.



- 5 Cover the webbing by stapling on a layer of burlap.



- 6 Add a layer of padding to cover the area. Staple sparingly.



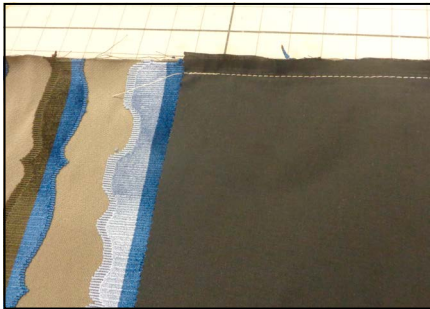
Making a Cut Plan and Cutting Fabric:

- 1 Measure each area of the chair both top to bottom and side to side.
- 2 Write down the measurements, adding a few inches to each one for pulls, tucks and play.
 - A. Don't forget to add measurements for the cushion and welting.
- 3 Plot all area measurements on a sheet of paper, using as much of the fabric width as possible.
- 4 Add up all plotted lengths and divide by 36 to get to yardage needed.
- 5 Transfer cut plan measurements and cutting guide to back of fabric.
- 6 Cut and mark each piece needed. Also, mark "UP" on each piece.

Completing the Seat Area:

- 1 Sew the denim deck cover to the Nosing fabric.
- 2 Place prepared fabric on chair seat, centering pattern to the front of the chair.

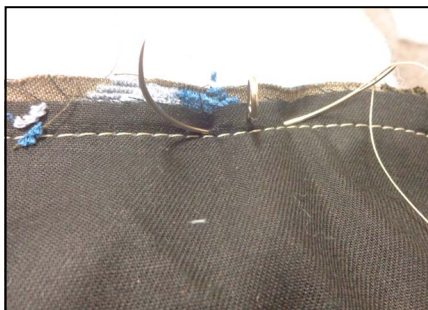
- 3 Staple the front fabric.



- 4 Fold the denim deck cover back to expose the join seam.

- 5 Place seam in its final resting place (correct tension and pattern alignment) then sew through seam allowance catching padding layers to secure Nosing to chair seat.

- 6 Unfold the denim deck cover to cover chair seat, top staple and trim.



- 7 At the front corners, make a peace sign relief cut and fold around leg. Trim, fold under and staple.

- 8 Finish stapling seat.



Adding Padding and Face Fabric:

- 1 Add webbing as needed to make a strong foundation.
- 2 Cover the webbing with burlap to close the hole.
- 3 Add padding in layers to build up curves.
- 4 Add a layer of batting on top of the padding, stapling all layers sparingly and behind actual fabric stapling area.
- 5 Add face fabric to area, trimming as needed and top stapling.
 - A. Your fabric may call for needing the edges turned under prior to stapling.
- 6 Complete each area of the chair.



Finishing the Chair:

- 1 Cut and make double welt cord.
- 2 Hot glue double welt to each area of the chair to cover staples, making good stops as needed.
- 3 Staple a new layer of black cambric to the bottom of the chair.

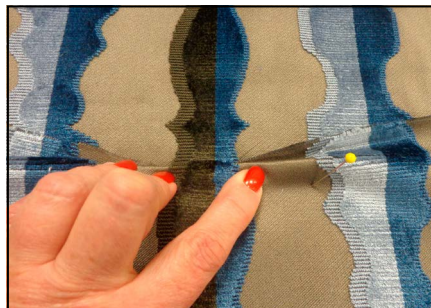
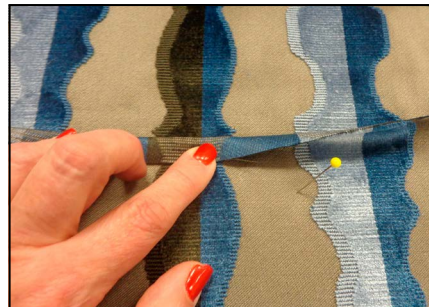
Making the Cushion:

- 1 Remove old fabric from cushion.
- 2 Check foam for age – revitalize old but good foam by steaming it to plump it back up.
- 3 Cover foam with a layer of batting, whip-stitching all edges together.

- 4 Make a pattern for the cushion in the newly padded seat area. Be sure to note pattern placement on the pattern.



- 5 Cut and make cushion cover, matching patterns at the boxing.



- 6 Insert wrapped foam into cover and close. Place in chair.



