

## Rowley how-to guide: **Hobbled Roman Shade**

Hobbled Roman shades combine beautiful soft folds with the functionality of a shade. The fabric can take this shade style from clean and modern to classic and timeless in a window.



### **MATERIALS & SUPPLIES**

#### **Rowley Products**

Hanes Classic Napped Lining  
 Straight Edge Ruler  
 Wood Ruler - 6"  
 Plastic Sew-On Rings  
 Erasable Fabric Marking Pen - Purple  
 Iron-On Roman Rib Tape  
 Plastic Roman Shade Ribs  
 Skirtex Stiffener  
 John James Hand Sewing Needles  
 A&E Upholstery Thread  
 Utility Scissors/Shears, 8"  
 Cord Adjuster Orbs  
 R-TEC EZ-Rig™ Lift System Kit  
 R-TEC Upholstery Air Stapler  
 71 Series Staples - 3/8"  
 Fabric Tubing for 3/8" Steel Rods

#### **SKU**

[LN48/](#)  
[MR19-MR28](#)  
[MR6](#)  
[ST15/W](#)  
[PM21](#)  
[RSR7](#)  
[RSR2](#)  
[SKX55/](#)  
[TP118](#)  
[TU6K/](#)  
[CU8/U](#)  
[RW19](#)  
[AHKK](#)  
[NSG10](#)  
[NS33/E](#)  
[RSR5/](#)

#### **Other materials Used:**

Blue Painter's Tape  
 Small screw driver  
 1x3 wood board for dust board  
 Screws for installation

### **HOBBLED ROMAN SHADE: STEP-BY-STEP INSTRUCTIONS**

This project guide covers the steps to fabricate a hobbled Roman shade using the EZ-Rig™ Lift System and Sure-Shade™ Encased Lift Cord Shroud Tape. This shade finishes at 39" FW x 65" FL. We used 10" of fabric in each hobble and 6" of lift per hobble to stay within industry guidelines.

Keep in mind that not all fabrics look good hobbled. Lay out the fabric into the hobbles to see the pattern interruption and to decide if the fabric will work for this style of shade.



## Cutting and Prepping the Face and Lining:

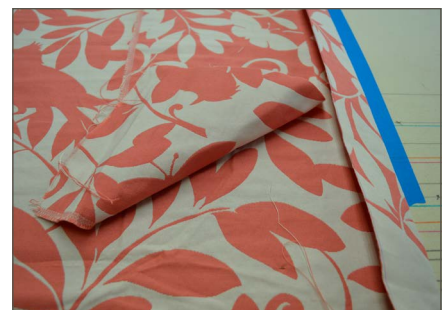
- 1 Using blue Painter's tape, measure and mark off the table top for the shade finished width and length.



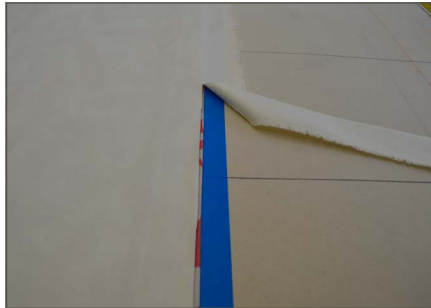
- 2 Lay fabric, face down, over tape, centering pattern.

- 3 Fold in sides to meet tape lines.

- 4 Measure and mark 2" in from each fold. Trim fabric.



- 5 Lay in a layer of lining, face up.
- 6 Trim to tape size.
- 7 Turn back 1" on both sides. Iron to set a crease.

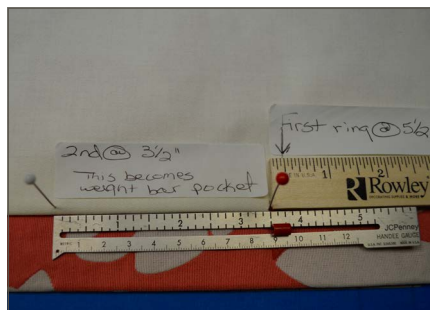


- 8 At the bottom, turn up 3" then fold into a 1 1/2" double hem. Press.



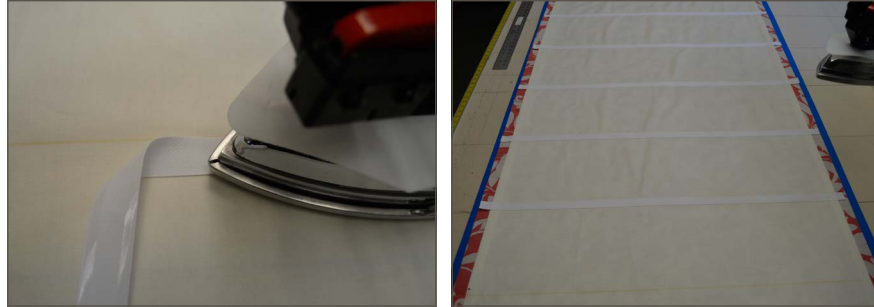
## Marking the Shade for Lift:

- 1 Mark the first row of rings 5 1/2" up from the bottom of the bottom hem.
- 2 Mark the second row of rings 3 1/2" up from the first mark. These two marks will make the weight bar pocket.
- 3 Measure and mark for Iron-On Rib Tape, measuring every 10" from the second row of rings.





- 4** Cut rib tape about 2" wider than the shade. Iron on rib tape.



- 5** For the bottom stiffener, cut a 10" piece of Skirtex, the width of the shade. Fold it over onto itself for a double layered 5" piece.

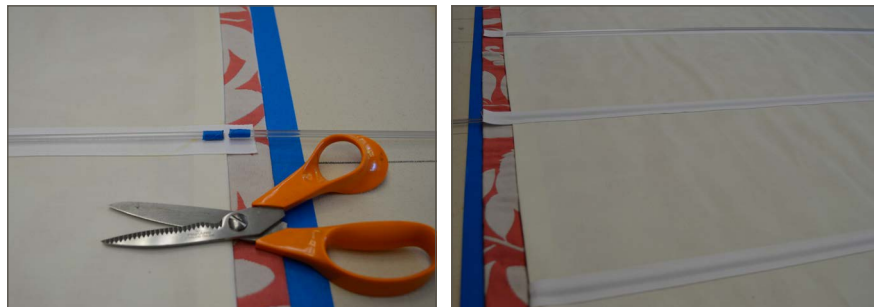
- 6** Slip folded Skirtex between lining and face fabric, tucking it into the bottom hem area.

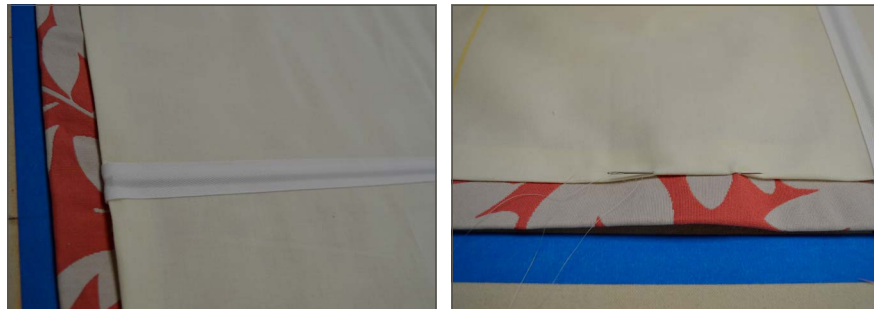


- 7** Measure ribs to finished width of lining minus 1". Cut ribs.

- 8** Slide ribs into rib tape, tucking empty end of rib tape into the lining.

- 9** Hand close the side hems and bottom hem.



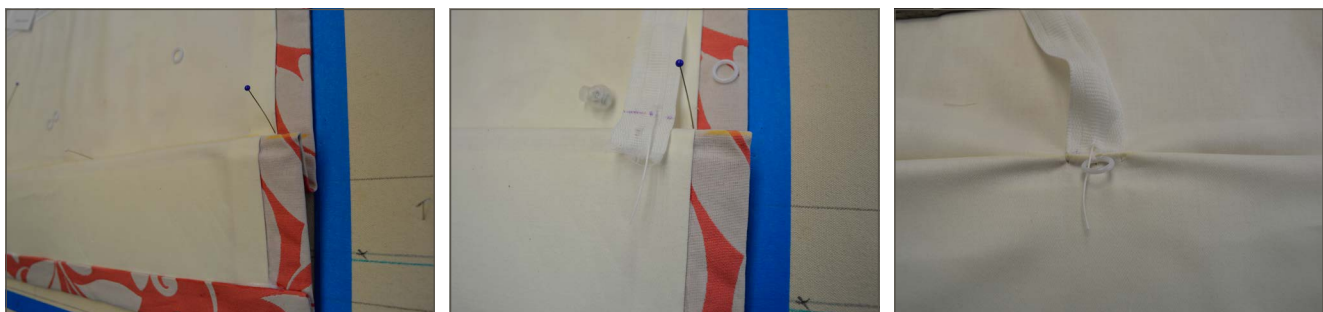


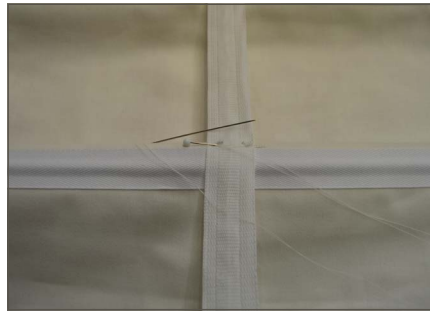
- 10 Measure and mark for tube placement going up the shade.
- 11 Starting with a 2" tail, measure and mark the Lift Tube every 6".
- 12 Match the 6" tube marks to the 10" shade ribs.



## Finishing the Shade:

- 1 At the bottom, align the first two rings for each row of lift.
- 2 Pull the cord from the Shroud Tube, run it through the rings and into an orb.
- 3 Tuck the empty end of the shroud tube into the weight bar pocket.
- 4 Sew rings and empty shroud tube, securing all layers. Sew on shroud tube to marks.
- 5 At the top of the shade, after the last tack point, pull the cord from the tube.
- 6 Run the empty shroud tube up the back of the shade – it will be caught on the dust board. The cord will go into the lift system.





**7** Cut and cover a weight bar. Slide it into the weight bar pocket. Close sides.



## Assembling the Lift System:

- 1** Cut the square drive rod and track according to the manufacturer's directions for the clutch you are using.
- 2** Insert bead chain into clutch.
- 3** Insert square drive rod into clutch.
- 4** Slide drums onto square drive rod.
- 5** Slide rod with drums into track.
- 6** Snap on end cap.
- 7** Align drums to lift cords and tighten.



## Mounting the Shade:

- 1 Measure and mark for finished length.
- 2 Staple shade to board.
- 3 Finish top as you wish (using welt cord or not and adding a dust cap or not).
- 4 Mount brackets to the bottom of the dust board.



- 5 Guide each lift cord into the appropriate drum and knotting it into the barrel. Slide the barrel into the drum.
- 6 Snap the head rail into the brackets.

## Installing the Shade:

- 1 Pop the track out of the brackets.
- 2 Screw bracket to wall.
- 3 Pop in head rail.
- 4 Test shade for function.
- 5 Measure, mark and install tension device.
- 6 Apply warning tags to bead chain.

