

## Upholstering a Channel Back Chair

Channel back chairs are a more advanced upholstery project due to the multiple steps needed to complete the inside back. Most any backed chair can be channeled with fore-thought and a lot of planning. Once the process is understood, it can be transferred to headboards, couches or even pillows.



## Upholstering a Channel Back Chair: Step-By-Step Instructions

Discover the steps to upholster our channel back chair. Our channels are straight (non-fanned) and are not cut for a specific pattern match.

This project will use the following terms: Inside Back, Outside Back/Arm/Wing, Arm Nosing, Inside Arm/Wing, Outside Arm/Wing, Decking and Cushion.

## Materials & Supplies

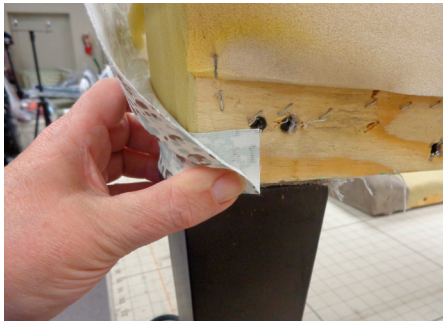
### Rowley Products

### Item #

Scissors	<a href="#">CU22</a>
Straight Edge Ruler - 60"	<a href="#">MR25</a>
Straight Edge Ruler - 72"	<a href="#">MR26</a>
Pen Style Chalk Markers	<a href="#">WW13</a>
R-TEC Upholstery Air Stapler	<a href="#">NSG10</a>
71 Series Staples	<a href="#">NS33/E</a>
Flexible Metal Tack Strip	<a href="#">CS60/</a>
Utility Scissors	<a href="#">CU8/U</a>
Upholstery Regulators	<a href="#">MH34</a>
White Rubber Mallet	<a href="#">MH44</a>
Tape Measure, 120" Flat	<a href="#">DT8</a>
W&I Oxford Everyday Lining	<a href="#">LNW70/</a>
Cardboard Tack Strip - ½"	<a href="#">CS50</a>
Glass Head Straight Pins	<a href="#">TP49</a>
Polyester Batting - 7 oz.	<a href="#">PF76</a>
Curved Needles	<a href="#">TP75</a>
A&E Upholstery Thread	<a href="#">TU6K/</a>
Upholstery Staple Remover	<a href="#">MH22</a>
Denim Deck Cover	<a href="#">DK01/</a>
Molded Tooth Zippers - #5	<a href="#">ETR52/</a>
Molded Tooth Zipper Slides - #5	<a href="#">ETP5</a>
Polyester Welt Cord - ¼"	<a href="#">WCP2/</a>
R-TEX Black Cambric	<a href="#">PA40/</a>

## Upholstering the Arm Nosing:

- 1 Cut strips of fabric wide enough to cover the area x long enough to cover + turn-unders.
- 2 Set the fabric over the Arm/Nosing area and adjust for pattern.
- 3 Turn under the bottom, by the leg, for a good start.
- 4 Staple to the sides (this will be stapled on the Outside Arm and Inside Arm areas).
- 5 At any bends, fold in a 45° corner and staple.
- 6 At the top, staple to the Outside Back area.



## Completing the Inside Arm/Wings:

- 1 If the frame is open, close the hole.
- 2 Run flexible metal tack strip pieces along the outside edges, keeping it back about one-eighth from the edge of the frame.
- 3 Stop and start pieces as needed for inside and outside bends.
  - A. Be sure to staple in each side of the first and last holes for added security.
- 4 Finger close the tabs halfway.





5 Add a layer of batting to the area, keeping the batting away from the teeth.

6 Lay the fabric over the area.

7 Rough cut fabric to shape.



8 Slightly tuck in some of the fabric into the teeth to temporarily hold it in place.  
A. You need to secure sides and top this way.

9 Staple the bottom in place, making relief cuts for the legs as needed.

10 Complete area by trimming a small section of fabric to ½" past the half-closed tack strip.

11 Tuck trimmed fabric into the teeth using an upholstery regulator and finger close to capture fabric in teeth.

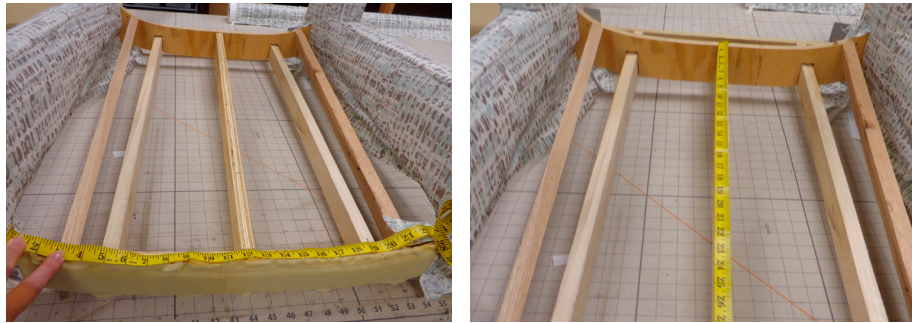
12 Make any relief cuts needed to get around chair rails.

13 Once all fabric is in place, pound tack strip closed using a rubber mallet.



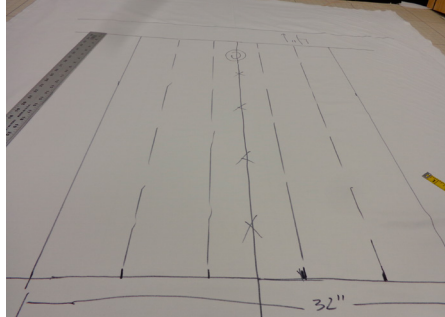
## Making the Lining Pattern for the Channels:

- 1 Measure for the lining pattern piece, measuring height x width + pulls on all four sides.
  - A. Be sure to leave at least 6" on top and at least 4" on the bottom of the lining pattern.



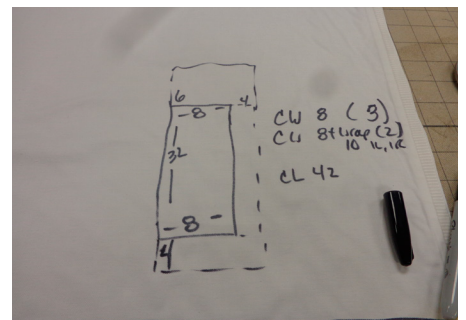
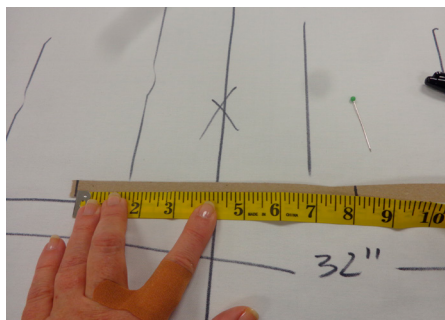
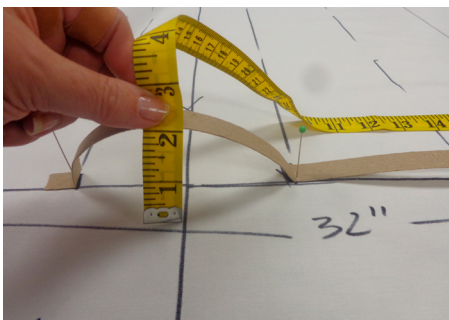
- 2 Transfer these measurements to the lining piece, from the center out.
- 3 Using the top width, decide on the number of channels.
- 4 Transfer channel lines to lining piece.
  - A. If you have an odd number of channels, the middle channel will split the center mark.
  - B. If you have an even number of channels, the center tow will butt up against the center mark.

**NOTE:** Do not cut your pattern but set it aside – you will be sewing the channel fabric to this piece later.



## Making the Channel Cuts:

- 1 Decide on the depth of the channels.
- 2 Once you have the measurement, transfer that width measurement to a new piece of lining as a pattern for your fabric.



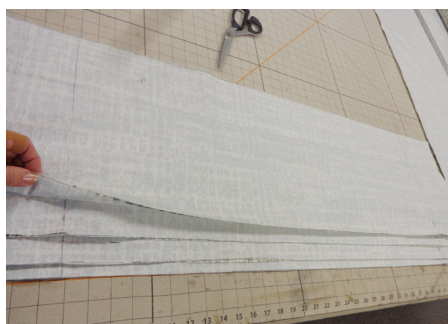


- 3 All center channels will need  $\frac{1}{2}$ " seam allowances added to the width, as well as 4" to the bottom for a bottom pull and 6" to the top for the top pull. These will all be the same.
- 4 Each outside channel will need seam allowances + additional fabric added to the outside edge for the pull onto the chair + the top and bottom pull amounts.
- 5 Transfer the five patterns to lining or directly to your fabric.
- 6 Cut pieces.

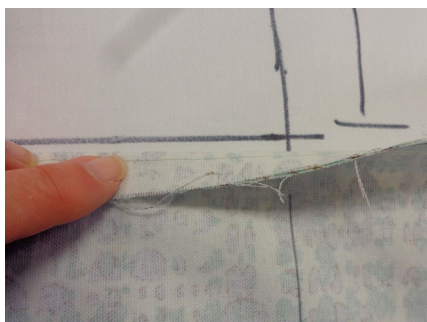


## Sewing the Channels:

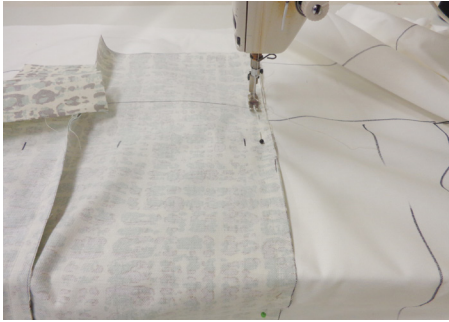
- 1 Layer all channel pieces in order and sew together, sewing only on the body area – do not sew the top and bottom pull areas together.



- 2 Lay your lining pattern on the table, face up.
- 3 Match the second line in to the first sewn stitch line of the face channels.

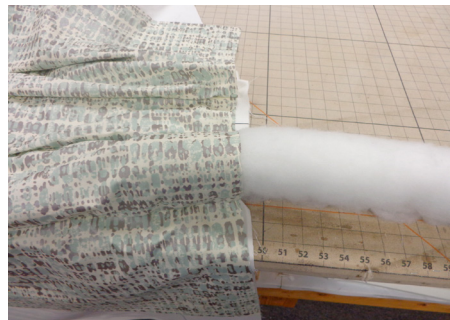


- 4 Sew that line, again only sewing where the channel seam is (leaving pulls open).
- 5 Move fabric over a line and align next seam to line.
- 6 Sew to attach using this method until all center channels are attached.
  - A. The two outside channels will not be completely sewn not the lining piece.



## Making the Channel Stuffing:

- 1 Cut a large piece of batting the length x enough to roll to get to a larger than channel size roll.
  - A. Once rolled and slightly compressed, it should be the size of the channel.
- 2 Make the first channel stuffing and whip stitch the edges closed.
- 3 Make the rest of the channel stuffing the same size, closing them also.
- 4 Stuff each inside channel with a channel stuffing roll.





## Finishing the Inside Back:

- 1 If your frame is open, close the hole.
  - A. There is no need to add a layer of batting to this chair.

- 2 Mark center of chair frame on the top and bottom.



- 3 Place prepared channels on the inside back area, matching centers on tops and bottoms.

- 4 Pull the lining onto the chair and staple, being sure it is staying straight up and down and centered.
  - A. Make relief cuts needed to get around the frame.



- 5 At the bottom, fold over channel fabric and top staple to secure to frame.



- 6 At the top, find the seam for each channel and staple, vertically, right next to the seam at the top of the frame.

- 7 Release the fabric layers up to the staple for each channel seam.



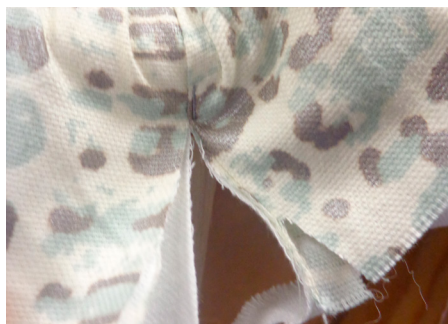
- 8 Add channel roll to the two outside channels.
- 9 Fold fabric over channel, match pattern marks to chair, make relief cuts as needed and staple to chair.
- 10 Complete the bottom of each outside channel.



- 11 Leave the top corner for last.
- 12 For each channel find the center of the fabric and staple to frame in the center area marked on the lining pattern.
- 13 Using the left-over fabric, fold it into folds or inverted pleats at each side of each channel so they rest right next to each other.



- 14 For the outside corners, fold fabric under two times to make a slightly angled finished fold.
- 15 Fit to chair and staple to secure.

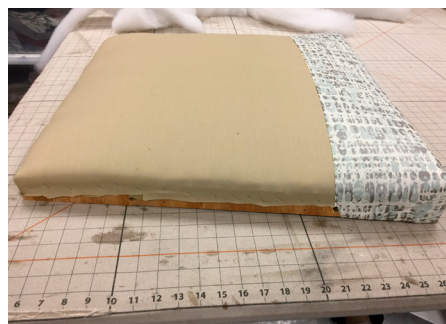
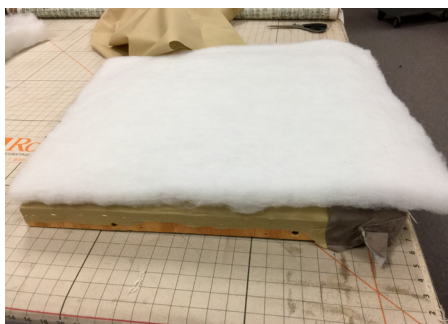




- 16 If any outside channels need additional stuffing, do so now from the back of the chair.
- 17 Once all channels are completed, remove lining staples on the back of the chair and fold fabric to cover the area. Re-staple.

## Completing the Decking:

- 1 Cover seat area with a layer of denim deck cover with a strip of face fabric sewn to the front 6" or so.
- 2 Pull onto frame and staple.
- 3 Replace seat into chair and secure.



## Making the Cushion:

- 1 Make a new cushion pattern by tracing the seat area.
- 2 Cut foam to match new pattern.
- 3 Wrap foam in batting and whip-stitch to close batting.



- 4 Cut top of cushion according to pattern, + seam allowances.
- 5 Cut the cushion bottom out of decking fabric + cut a strip of face fabric to make a front band.

- 6 Sew band to denim deck cover.



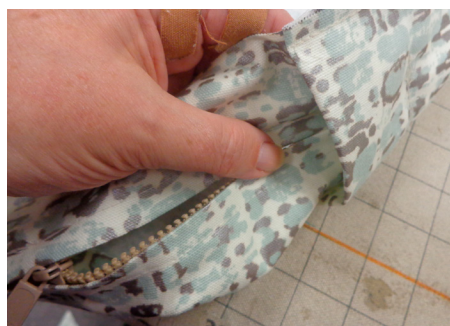
- 7 Cut boxing, + seam allowances.

- 8 Cut two strips for the height as the boxing.

- 9 Fold strips in half, lengthwise and press.

- 10 Install a flap zipper into the two strips.

- 11 Sew zipper to boxing, adding a parking garage for the pull.



- 12 Sew boxing to cushion top, centering the zipper on the back, wrapping a few inches onto the sides.

- 13 Find and mark all corners.

- 14 Match corners of boxing to cushion bottom.

- 15 Open zipper and sew on cushion bottom, making final cuts to boxing length as you come to it on the cushion.

- 16 Turn right sides out, stuff and close.





## Finishing the Outside Back/Arm/Wing:

- 1 Close the hole.
- 2 Cut and make enough covered welt cord to go around three sides of the chair + around the entire bottom + joins.
- 3 Staple welt to outside of chair frame, starting and stopping with good ends.
- 4 Staple on rows of flexible metal tack strip to the outside edge so it butts up to the welt cord.
- 5 Finger close halfway.



- 6 Add a layer of batting to the exposed area, keeping batting within the teeth of the tack strip.
- 7 Staple sparingly and only if needed.
- 8 Place fabric over area and align for pattern.
- 9 Rough-cut fabric to shape.
- 10 Secure fabric on side and top to keep it temporarily in place.
- 11 Complete the area using an upholstery regulator, scissors and a rubber mallet.
  - A. For specifics, see above steps on Completing the Inside Arm/Wing.
- 12 Staple a row of covered welt to the bottom of the chair, making the join slightly off center in the back and cutting away the welt lip around the legs.

13

Staple on a row of black cambric to close the bottom.

