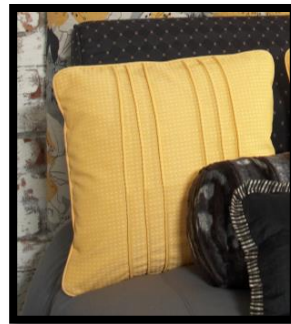


Rowley Project List: Decorative Welt Detail Pillow

Pillows add visual interest and dimension to a bed and are a great up-sale for workrooms and designers. This pillow grouping puts a contemporary twist on traditional designs and features four pillow styles including a unique foam pillow that can add depth and function to your top of bed designs.



Materials and Supplies

Rowley Products

Tapered Corner Pillow Template
 5/32" Polyester Welt Cord
 Lining
 Interlining
 Fringe Adhesive
 18" Down Insert
 Hand Sewing Needles

SKU

[PF08](#)
[WCP0](#)
[RN40](#)
[RN10](#)
[FA10](#)
[FD18/10](#)
[TP112](#)

Decorative Welt Detail Pillow: Step-By-Step Instructions

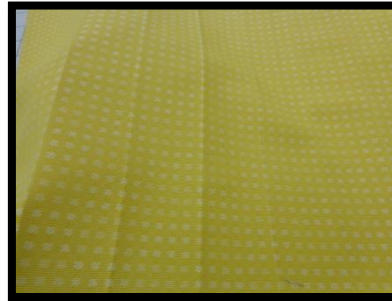
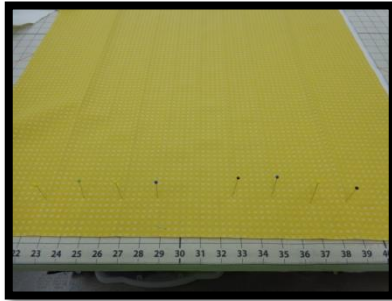
This pillow will finish at 18 x 18 and is filled with a 10/90 Down Insert. It was hand closed but could have been planned for a zipper closure. This pillow allows for 1/2" seam allowances.

Cutting and Prepping the Fabric:

1. Cut and make enough welt to go around the outside of the pillow.
2. To cut the back, lay the Tapered Corner Pillow Template on the face fabric. Mark for an 18" pillow.
3. Cut the back and set aside.
4. To cut the front, cut a rectangle at 22W x 20L. This can be a true rectangle cut since you will be matching it to the back and trimming before you sew the front to the back.



5. On the back of the front, mark the pattern for the welt detail. I marked the center, then every 2” out to the sides for a total of seven marked lines, centered.
6. Fold on the marks, wrong sides together, and iron to set a crease.



7. At the machine, fold wrong sides together, laying the welt in the crease. Sew the welt in the crease.
 - a. Use a slightly larger welt foot for a loose seam.



8. Complete all stitch lines for your design.
9. Lightly mist the welted fabric, stretch it to block it and pin to table. Allow the piece to dry.
10. Clip the welt cord out of the seam allowances.

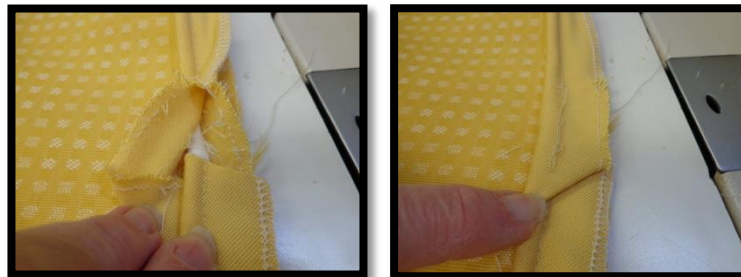


Finishing the pillow:

11. Lay the front and back, right sides together, on the table. Trim to the back size.
12. For the front and back pieces, layer lining and interlining then the pillow fabric.
13. Glue-baste all layers together. Trim off excess.



14. Sew welt to the front piece, joining at a side.



15. Sew the front to the back, leaving an opening for turning.



16. Turn right sides out and stuff.

- a. Always open inserts and allow them to breath before stuffing into casing.