

## Rowley Project List: Micro Pleat Detail Pillow

Pillows add visual interest and dimension to a bed and are a great up-sale for workrooms and designers. This pillow grouping puts a contemporary twist on traditional designs and features four pillow styles including a unique foam pillow that can add depth and function to your top of bed designs.



### Materials and Supplies

#### Rowley Products

Tapered Corner Pillow Template  
 Polyester Iron-On Batting  
 Perfect Pleating Tape  
 12" x 16" Down Insert  
 Hand Sewing Needles  
 Fabric Stapler / Staples  
 Magnetic Staple Remover

#### SKU

[PF08](#)  
[PA20/](#)  
[DYC86](#)  
[FD32/10](#)  
[TP112](#)  
[WW70; WW71](#)  
[WW72](#)



### Micro Pleat Detail Pillow: Step-By-Step Instructions

This pillow will finish at 12 x 16 and is filled with a 10/90 Down Insert. It was hand closed but could have been planned for a zipper closure. This pillow allows for ½" seam allowances. For full instruction on how to use the Perfect Pleating Tape please see the product instructions on our website.

### Cutting and Prepping the Fabric:

1. Using the tapered corner pillow template, cut a 12 x 16 rectangle for both the front and the back.
2. Iron on Iron-On Batting to the back of both the front and the back pieces.
3. Cut fabric strips for the pleats at 3 ¼ widths x 3"L.
4. Join strips into one long piece.
5. Fold wrong sides together along the length and iron to sew crease.
6. Top stitch or serge along the raw edge to keep layers from shifting.

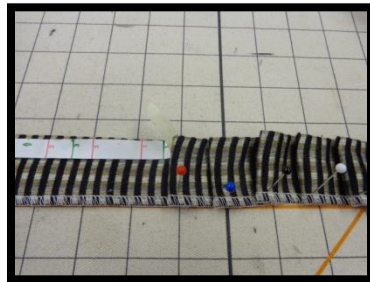




7. Choose the pattern for pleating by folding a strip of Perfect Pleating tape until you get to the pleat size you want. I chose to do a 1" pleat so I would have a full pleat at each corner.

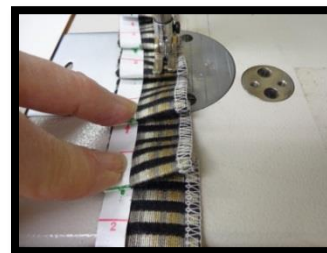
8. To pleat at the table:

- a. Lay the pleat strip on a grid-line
- b. Stick the pleating tape on the folded edge so you can read the numbers.
- c. Pin one end to the table to keep the strip from shifting.
- d. Fold into pleat pattern, pinning to hold pleats.
- e. To be able to move the pleated strip to the machine, staple at the folded edge of each pleat.



9. To pleat at the machine:

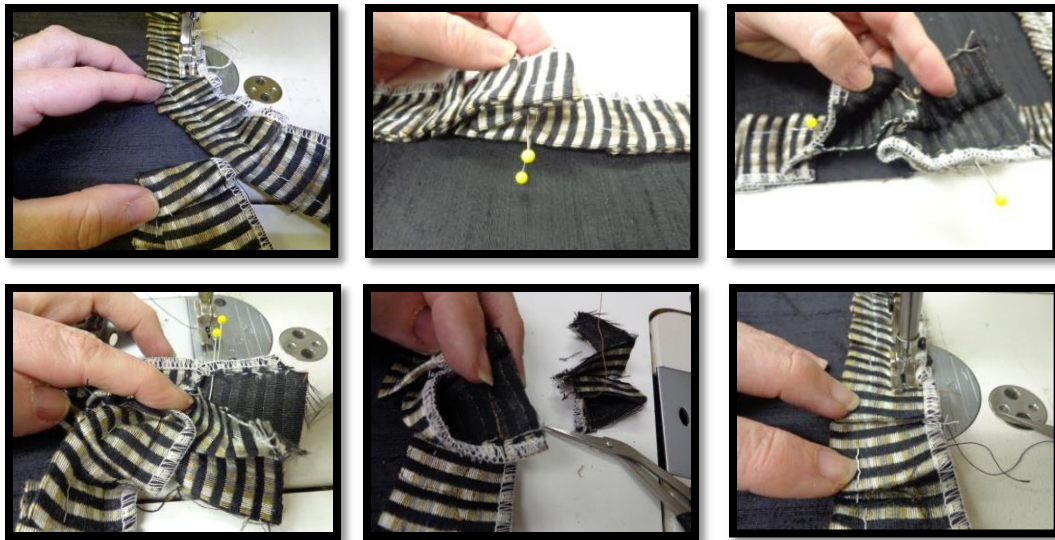
- a. Lay the pleating tape on the folded edge of the pleat strip.
- b. Fold into pleats as you sew through the layers.



10. Lay right sides together and attach pleats to face of front, joining at a side.



11. To join the pleats into a seamless join:
  - a. Fold the pleats together to get the join.
  - b. Place a pin where the two pieces need to be joined. Hide the join inside a pleat.
  - c. Unfold the two pieces and open the raw edges.
  - d. Match pins and stitch along the pin line to join the two pieces together.
  - e. Refold and continue to sew pleats to front.



12. Lay front to back, right sides together. Sew to join, leaving an opening for turning.



13. Turn right sides out.
14. Remove any staples.
15. Stuff and close.

