

Woven Center Field Pillow

Discover how to take weaving from basic to upscale in our decorative throw pillows with two rows of mitered banding, welt cord trim and upholstery-grade vinyl. Brushing up on this skill can create expanded opportunities for unique fabrication elements in chairs, window treatments and more.

Materials & Supplies

Rowley Products

Professional Shears / Scissors

A&E Upholstery Thread

R-TEX Micro Welt Cord - ⁴/₃₂"

Curved Needle

Glass Head Straight Pins

Fabric Stapler

Fabric Stapler Staples

Magnetic Fabric Staple Remover

SKU

[CU22](#)

[TU6K/](#)

[WC85](#)

[TP75](#)

[TP49](#)

[WW70](#)

[WW71](#)

[WW72](#)

Other Products Used:

Quilter's Clear View Ruler

Permanent Marker



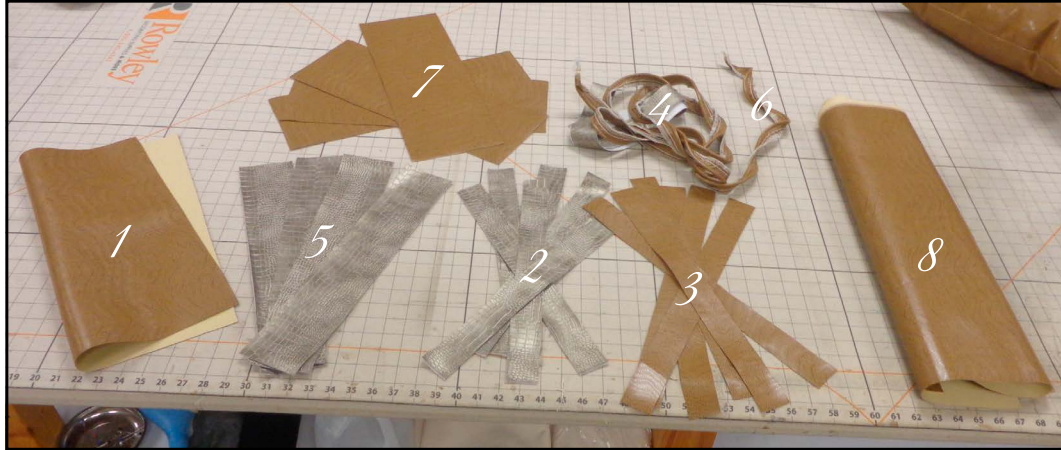
Woven Center Field Pillow: Step-By-Step Instructions

This how-to guide covers the steps to cut and fabricate the woven center field pillow with two mitered bands separated with micro-welt cord.

Cutting and Prepping the Front and Back Pieces:

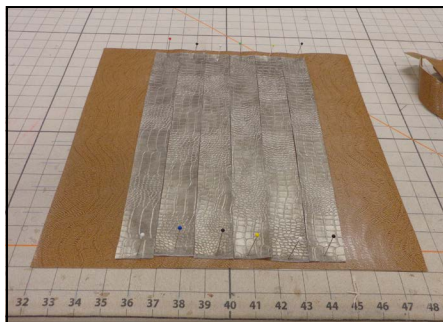
- 1 Cut 1 @ 16" x 16" for the back of the center out of B fabric.
- 2 Cut 6 @ 1 1/2" x 16" out of A fabric.
- 3 Cut 6 @ 1 1/2" x 16" out of B fabric.
- 4 Cut and make enough micro welt cord out of A fabric to go around a 12" square, plus joins.

- 5 Cut 4 @ 4" x 18" out of A fabric.
- 6 Cut and make enough welt cord out of B fabric to go around a 16" square, plus joins.
- 7 Cut 4 @ 5" x 24" out of either A or B fabric.
- 8 Cut 1 @ 21" square for the back out of B fabric.

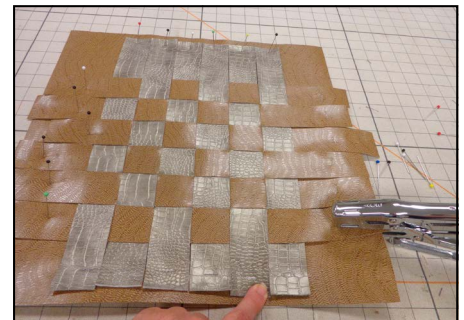
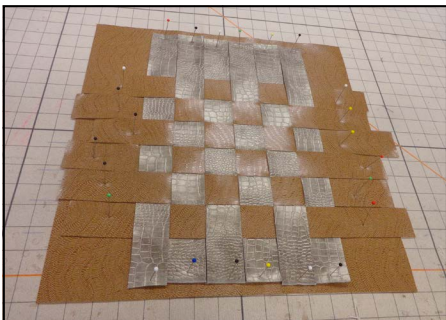


Making the Center Field:

- 1 Lay the back of the center fabric on the table, face up.
- 2 Lay the A strips running top to bottom, centered on the back fabric.
 - A. All strips should be snug up against each other and start and stop at approximately the same measurement.
 - B. Pin at both ends to keep these from moving much.

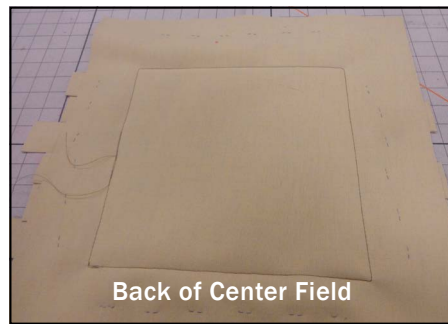


- 3 Weave B strips over and under A strips, snugging them tight together.
- 4 Pin at both ends to keep these from moving much.
- 5 Using the fabric stapler, staple the ends of the strips, all the way around the pillow center.



- 6 At the machine, sew welt to the face. The seam for the welt should be at the very edge of the last strip of woven fabric.
- A. Be sure to cut the welt lip at the corners so you end up with tight, square corners.
 - B. Make the join at the machine.

- 7 Remove staples from edges.



Adding the First Mitered Band:

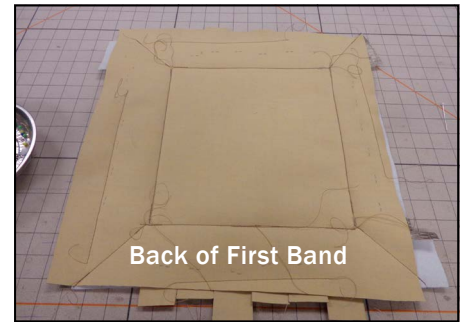
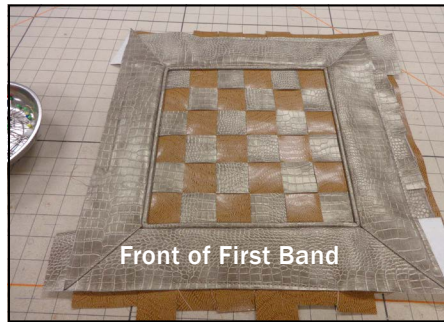
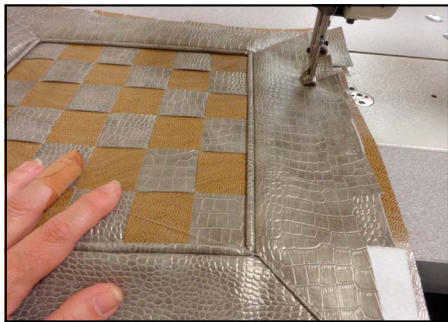
- 1 Sew one of the four smaller strips to the welt cord seam, starting and stopping at the corner.
- 2 Do all four sides.



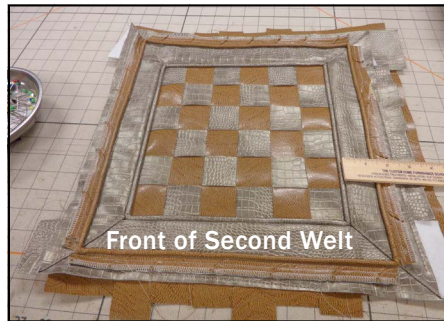
- 3 Miter the corners by folding under the top layer and machine stitching to secure.



- 4 At the very outside edge of the fabric square, top stitch all layers together to keep them from shifting as you add more layers.



- 5 Sew on a row of welt so that the welt runs 1 1/2" out from the center welt.
A. This should make your first band 1 1/2" wide.
B. Make the welt join at the machine.



Adding the Second Mitered Band:

- 1 Sew one of the four larger strips to the welt cord seam, starting and stopping at the corner.
2 Do all four sides.



3 Miter the corners by folding under the top layer so that the miter runs on the same layer as the first miter.

4 Top stitch to secure.

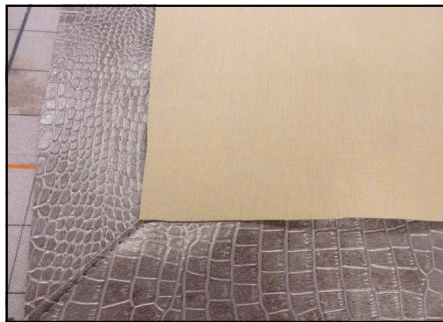


Finishing the Pillow:

1 Place front on the table right sides up.

2 Center the back over the front, matching mitered corners to the back corners.

3 Staple in from seam allowance to hold all layers together.



4 Sew front to back, leaving an area for turning.

A. On the side with the opening, be sure to sew far enough in to pass the miter bulk.

5 Trim away edges and clip corners.



6 Turn right sides out and punch out corners, being very careful not to go through the vinyl.

7 Stuff and hand close using a curved needle and upholstery thread.

