

Double Layered Treatment for a Single Rod

Corner windows pose a plethora of potential problems that flat wall windows typically do not, including bracket projection options and corner support. Discover how we've created a double treatment to fit a single rod, taking into account the corner and window specifications, then calculating bracket placement accordingly for a designer window treatment.

Materials & Supplies

Rowley Products

Professional Shears / Scissors

Fringe Adhesive

Gutermann Polyester Thread

Glass Head Straight Pins

Drapery Weights

R-TEX Micro Welt Cord - ³/₃₂"

Fabric Stapler

Fabric Stapler Staples

Magnetic Fabric Staple Remover

Hanes Drapery Interlining

Hanes Classic Sateen Lining

Gimp Trim

R-TEX Pressure-Sensitive

Adhesive Buckram - 4"

John James Hand Sewing Needles

Straight Edge Ruler

Wood Ruler, 6"

Drapery Pins

AriA™ Antiquities Hardware

SKU

[CU22](#)

[FA10](#)

[TG5M/](#)

[TP49](#)

[SW37](#)

[WC83](#)

[WW70](#)

[WW71](#)

[WW72](#)

[LN10/](#)

[LN46/](#)

[G22S/](#)

[BXP34/T](#)

[TP108](#)

[MR26](#)

[MR6](#)

[DP53](#)

[FM138](#)

Other Material Used:

3" Clear-View Ruler



Double Layered Treatment for a Single Rod: Step-By-Step Instructions

We planned a double treatment that would hang on a single decorative rod. To do this, we made a peak-through sheer that lined the entire panel but peaked-through only at the leading edge with pleats. We also pleated to pattern, with two different pleats to add interest and used holdbacks at 38" for a more modern look and feel. Our panel finished at 112" with the attached sheer finishing at 118".

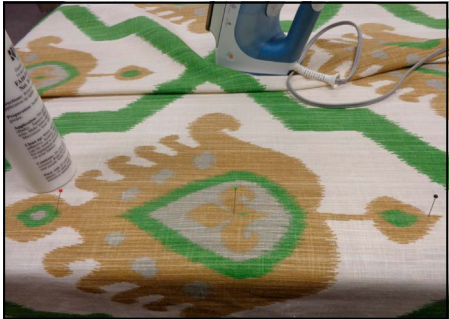
Making the Panel:

Preparing the Pieces:

- 1 Cut face fabric to Finished Length + bottom hem + top header.

2 Cut the number of widths needed for your project.

3 Join widths as needed, matching patterns at the join seam.



4 Measure and press in double-folded 4" bottom hem.

5 Close hem, adding a drapery weight at the join seams.



6 Measure and press in a double-folded 8" header.

7 Open the header and cut along the width at 1/2" down from the fold.

8 Cut and make micro-welt cord for the header.

9 Sew in a row of micro-welt to the original press line.

10 Sew on back facing to header.

11 Press seams toward top.

12 Refold header.





- 13 Cut interlining to FL - 2".
- 14 Serge bottom hem.
- 15 Cut lining to FL - 1" + 6".
- 16 Fold in a double 3" bottom hem and press.

Finishing the Panel:

- 1 Table face fabric, face down.
- 2 Lay interlining, face down on top of face fabric, 2" up from bottom hem.
- 3 Lay lining, face up on top of interlining, 1" up from bottom hem.



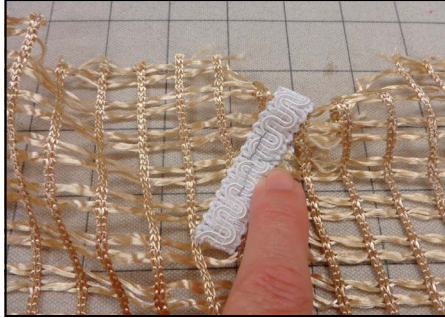
- 4 Fold in and press double 1 1/2" side hems.
- 5 Staple to keep closed.
- 6 Close leading edge side hem, stopping about 5" from the header, and adding a weight at the bottom corner.
- 7 Leave the return side hem staples for now, but add the weight at the bottom corner.



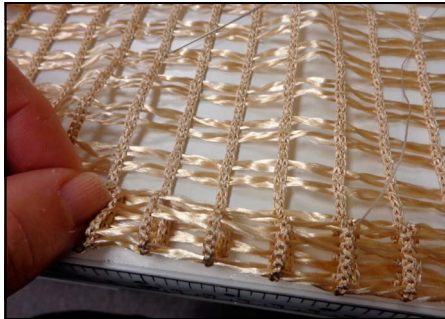
Making the Sheer:

Preparing the Pieces:

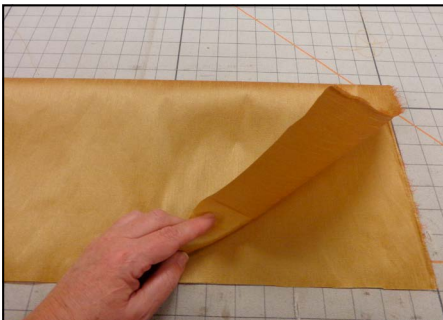
- 1 Cut lengths as needed.
 - A. If your sheer does not allow for the finished length in one cut, add pieces as needed.
- 2 Join widths together as needed.
- 3 Mark top and face of each piece.



- 4 Hem the bottom and leading edge side of the sheer.
- 5 On the return side, hem about 20" up from the bottom only.



- 6 Fabric wrap an 8" piece of buckram the width of the finished panel.
- 7 Serge the three raw sides to keep the buckram enclosed.

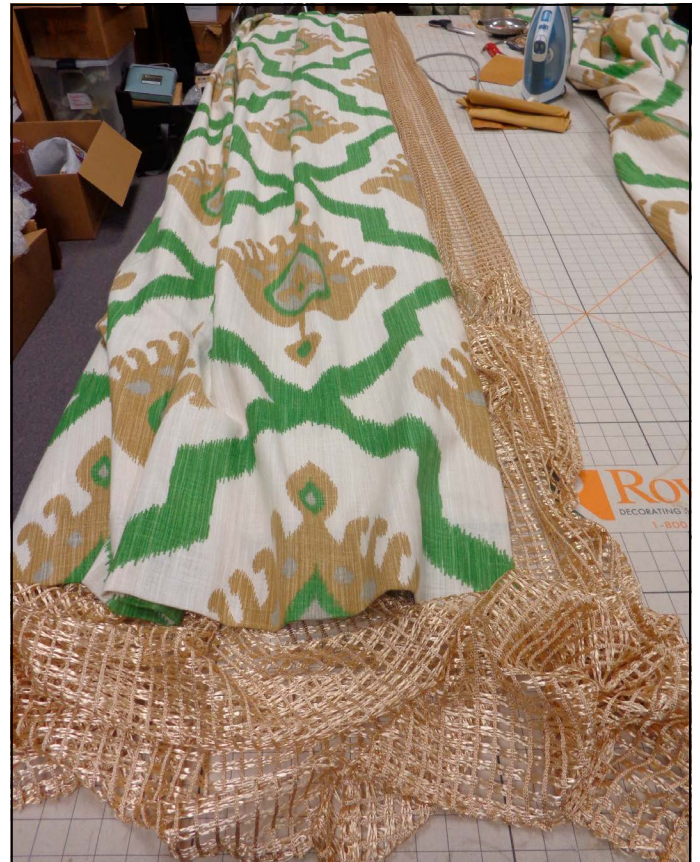
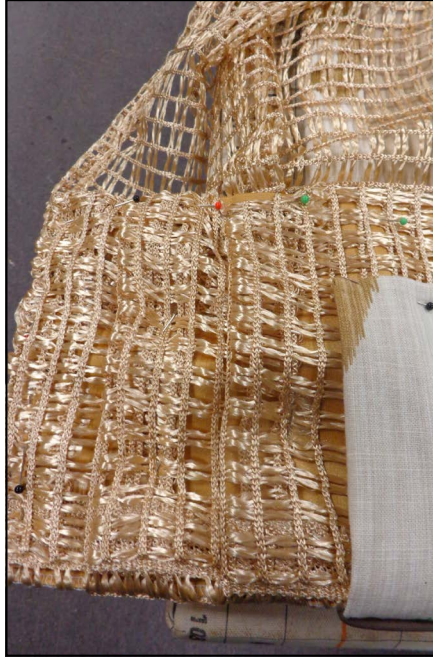


Finishing the Sheer:

- 1 Table sheer face down so the leading edge is closest to you.
- 2 Fold in two 2" pleats, starting 3" in from the outside edge.
- 3 Pin folds well.



- 4 Lay prepared buckram in header so that the last pleat sits right next to the side hem.
- 5 Tuck the edge of the sheer under itself, so that no sheer from the double header fold shows on the front.
- 6 Hand close header and header side, catching all layers.
- 7 Tuck the other side of the sheer into the return side hem.
- 8 Close side hem.



Making Pleats:

- 1 Mark for pleats and spaces.
- 2 Sew in pleats.
- 3 Hand tack pleats.
- 4 Place a drapery pin in the back of each pleat and at the leading edge of the sheer.



Installation:

- 1 Install hardware as directed from the manufacturer.
- 2 Place treatment onto rings.
- 3 Dress by puddling sheer (it is an underlayer and will dress easy).
- 4 Pull sheer and treatment back to the holdback, bellying as needed.
- 5 Dress out pleats and face fabric puddle.

