

Rowley project list: **Roman Shade with Color Block Banding**

Roman shades can be fabricated many different ways and the classic flat Roman shade is one of the most subtle yet elegant styles. Add another layer of style by incorporating a color block banding to the hem that coordinates the shade with the rest of the design elements in the room. The shade is fabricated to function by incorporating a standard-approved shrouded lift cord and a lift system.



FLAT ROMAN SHADE: STEP-BY-STEP INSTRUCTIONS

This project guide covers the steps to fabricate a flat Roman shade with color block banding technique.

Measuring:

- 1 Determine if you are going to place the Roman shade inside of the window frame (inside mount) or outside of the window frame (outside mount).

MATERIALS & SUPPLIES

Rowley Products

- Lining
- Interlining
- Fusible Stabilizer
- Metal Sew-On Rings
- Cord Adjuster Orbs
- Sure-Shade™ Encased Lift Cord
- Shroud Tube
- Upholstery Air Stapler
- 71 Series Staples - 3/8"
- EZ-Rig™ Soft Shade System

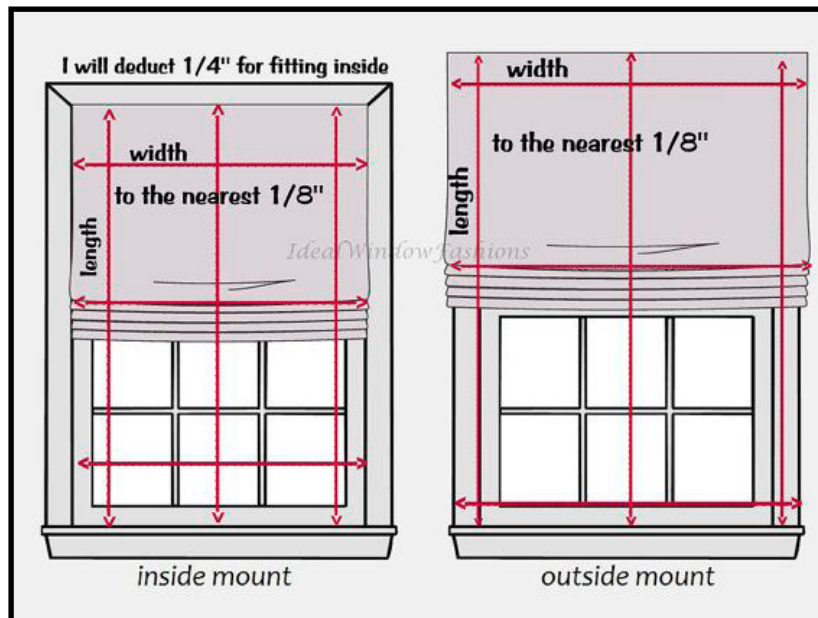
SKU

- [LN40](#)
- [LN10](#)
- [FB12](#)
- [ST16/N](#)
- [RW19](#)
- [ELK14/W](#)
- [NSG10](#)
- [NS33/E](#)
- [Custom Solutions](#)

Other Materials Needed

- 1 x 3 Wood Board
- Screws for Installation

- 2** For an inside mount width, measure exact distance to the nearest $\frac{1}{8}$ " between inside surfaces of the window frame at the top, middle and bottom; use the narrowest width. For height, measure exact distance to the nearest $\frac{1}{8}$ " from the inside surface at the top of the window to sill at the left, middle and right; use the longest height. If you prefer the shade not to touch the sill, deduct $\frac{1}{4}$ ". If there is no sill, measure height to point where shade is to reach.
- 3** For an outside mount width, measure exact distance to the nearest $\frac{1}{8}$ " between the outermost points where the shade is to be placed. For optimum light control, this measurement should extend $1\frac{1}{2}$ " to 3" beyond the window opening on each side.
- 4** For height, measure exact distance to the nearest $\frac{1}{8}$ " from where top of the shade will be located to the top of the sill. If there is no sill or if the shade is to overlap the window frame, measure to the point where the shade is to reach.



Calculating the Yardage:

Vertical repeats are important to understand when calculating yardage. The average repeat is 27"; however, always check your repeat dimension. If you are using more than one width of fabric, calculate in the repeats so that when the pieces are seamed together, the pattern matches.

- 1** For the length of the flat classic Roman shade, add 20" to the overall length based on your window measurement. (The extra 20" accounts for hems and mounting.)
- 2** Add the thickness of the banding desired + $5\frac{1}{2}$ " for the hem + $\frac{1}{2}$ " for the seam allowance. In this example the band was 3", $5\frac{1}{2}$ " was added for the hem, + $\frac{1}{2}$ " for the seam allowance = 9")
- 3** Measure one piece of primary fabric the finished width of the window plus 4" for side hems. Remember, if seaming pieces together allow for width of the seams as well.

Cutting & Assembling the Shade:

- 1 Make sure the cutting line is square by using a carpenter's square or by placing the fabric along the straight edge of a cutting table.
- 2 Cut the primary fabric to the calculated length minus the amount needed for the color block band.
- 3 Cut the lining and the interlining the same width and length as the overall shade.
- 4 Place the face side of the fabric up and the color block fabric down on top. Sew the face fabric to the color block with ½" seams. Press seams open or to the side if serged.
- 5 When making a Roman shade, always off center a seam so you don't have an unsightly seam running down the middle of the shade. If you are using two panel widths of fabric, cut one panel in half vertically and sew one of the split panels onto each side of the whole panel (left and right).
- 6 Sew the widths together using a ½" seam, matching the patterns if necessary. Press the seams open or to the side if serged.
- 7 Place the right side of the face fabric down. Place the interlining on top. Place the right side of the lining up (wrong sides together). Match the seams as close as possible. Keep the bottom edges of the fabric even. Pin on the seam lines and around the outer edges to hold in place.
- 8 Determine the width of the fabric needed. Add 4" to the width for side hems. Find the center of the panel and measure from the center over ½ of the determined fabric width. This example: desired finished width = 39" + 4" = 43". Divide by 2 = 21.5".
- 9 Measure from the center out 21.5" on each side and trim off the excess.
- 10 On the sides, fold in a 1" hem and press. Fold in another 1" and press.
- 11 Top stitch or run through a hemmer.



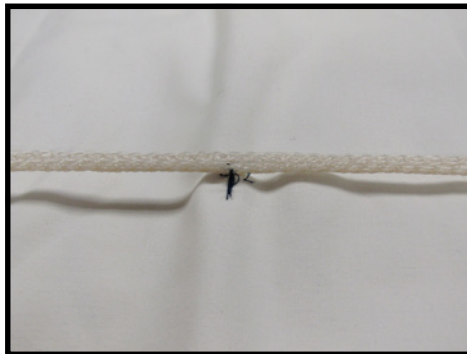
Side hem view with shroud tube attached.

- 12 Double check your width measurement here. (Your width should equal your bracket to bracket measurement.)

- 13** Place the primary fabric right side down with the bottom edge up. Press the bottom up 1", then press up another 5 1/2". (This will give a rod pocket 1 1/2" and a 4" flap at the bottom of the shade.)
- 14** From the bottom edge, mark at 4" and draw a line across (use tailor's chalk or erasable fabric pen).
- 15** Top stitch along the chalk/pen line and along the fold.



- 16** Place the shade on the table, lining side up.
- 17** Prepare the Sure-Shade Encased Lift Cord Shroud Tube: cut the tube to the length of the shade + 6" - 12". There is a 9" minimum between the rows of shroud tape on the EZ-Rig system. The example shade finished width was 39". Deduct 2" from both sides of the shade to allow for the outer columns (39" - 4" = 35"). Divide the width of the shade by 9 to calculate the number of rows needed for the shroud tube (35" ÷ 9 = 3.89"). Round down for the number of rows. Therefore, the total number of shroud tube rows is 3. Each row is 11.66" apart.
- 18** Place one row of Sure-Shade Encased Lift Cord Shroud Tube 1" from the edge and 2" from the fold. Tack a ring at the 2" mark. Move over 11.66" and tack another ring at 2". Tack the remaining spots. Tack the tube in place every 8". Place the next row 11.66" in and tack every 8". Continue for the remaining rows of shroud tape (rows 3, 4 and 5).
- 19** Release the shroud tube cord and string cord through the ring at the bottom of the shade. Secure the cord with a Cord Adjuster Orb. Repeat stringing for all the individual rows. Please see the Sure-Shade Encased Lift Cord Shroud Tube product information for further instruction.



- 20** Place the shade flat out on the table. Measure up from the bottom to the desired length. Fold along the line and press. Add an additional 2" for mounting on the board and cut.
- 21** Mounting board – cut the board $\frac{1}{8}$ " less than the finished width. Cover the board with face fabric or lining.
- 22** Staple the shade on to the mounting board



Assembling EZ-Rig and Shroud Tube:

- 1** Insert the brass rod into the small pocket just below the fold.
- 2** Install with angle irons or by screwing the optional mounting board directly into the wall or window frame .

