

Rowley project list: **Pillow & Duvet Flange Detail**

Adding contrast banding to custom home goods is an add-on embellishment that may be subtle or could add quite the color statement. Adding a double band will not only add color but additional texture to dust skirts or any fabrication project. Let's get right to it in the simple step-by-step instructions below.



MATERIALS & SUPPLIES

Rowley Products

Fusible Stabilizer (White)

*Fusible Stabilizer is also available in Ivory (FB11), Tan (FB12) and Black (FB13) to fit any project.

6" Wood Ruler

Optional Materials

Lining

Interlining

SKU

FB10

MR6

LN44

LN10

FLANGE DETAIL: STEP-BY-STEP INSTRUCTIONS

This project guide covers the steps to fabricate a flange detail that can be added to pillows and duvets for the perfect accent.

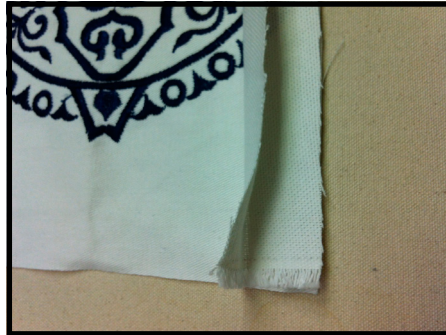
Note: The flat flange is a detail that is becoming more popular in today's industry. On pillows and duvets, this detail replaces covered welt cord as a decorative element. However, if extra length is needed on a duvet cover, a wider flat flange may be added as a way to increase the overall finished width and length of a duvet cover.

Creating the Flange:

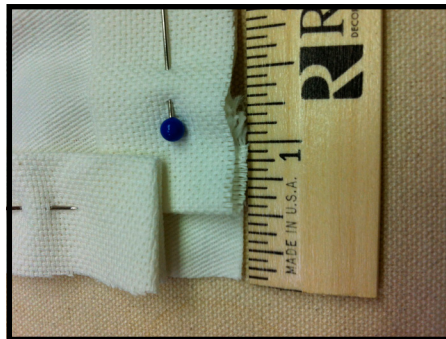
- 1 For a finished flat flange of 1/2", cut strips of the flange fabric that are 2" wide, 1 for each side of the pillow or duvet that will be flanged. The flange fabric length needs to be the same as each side of the pillow or duvet. So, for a 18" pillow cut, you will need 4 bands at 18" x 2".



- 2 Fold the flange fabric strips in half lengthwise and press. Place the strips on top of the pillow or duvet front, matching the raw edges.



- 3 Fold in the short ends of the flat flange by 1/2" on each end. Pin onto pillow front, starting and stopping each flange 1/2" from the edges. Stitch a 1/2" seam allowance. Serge raw edges.



- 4 The corners should look like the image below.



- 5 Place the pillow or duvet back over the front, right sides together and stitch in place, leaving an opening for a zipper.



- 6 Turn the pillow or duvet cover right sides out to reveal the beautiful flat flange detail.

