

## Rowley project list: **Swag Overlay**

This formal treatment features an embroidered silk panel with a beautiful silk swag overlay. To complete the window, a stationary, relaxed Roman shade was installed. Decorative hardware from Finestra is showcased to pull the look together for a breathtaking formal look. We will only cover the fabrication steps of the swag overlay in this project guide.



### MATERIALS & SUPPLIES

#### Rowley Products

- R-TEX Standard Wt. Interlining
- Classic Napped Lining
- Fusible Stabilizer
- Sausage Bead Weight
- Fringe Adhesive
- Glass Head Pins
- Drapery Pins

#### SKU

- [RN10](#)
- [LN48](#)
- [FB11](#)
- [LW80](#)
- [FA10](#)
- [TP49](#)
- [DP53](#)

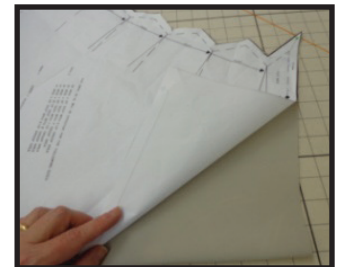
## BEADED SWAG OVERLAY: STEP-BY-STEP INSTRUCTIONS

This swag overlay finished 20" wide and had a drop of 22" not including the beaded trim. It is interlined and lined and is installed using drapery pins. 2 1/2" drop glass beads were added for bottom trim. M'Fay pattern 9258: Drapery Swags II was used.

### Cutting and Prepping:

- 1 Rough cut one yard of fabric.
- 2 Iron on Fusible Stabilizer to the back of the fabric.
- 3 Fold the fabric right sides together on a bias.
- 4 Lay the cut-out pattern on the fabric fold, matching the fold lines.

- 5 Trace around/cut out pattern piece.



- 6** From stabilized fabric, cut and make bias-cut welt strips, using scraps from the stabilized face fabric.
- A.** Instead of welt cord, use the sausage bead weight for a fully distributed weight along the curve of the swag. Set aside.
  - B.** Connect all strips at the machine. Clip apart for one long continuous strip.

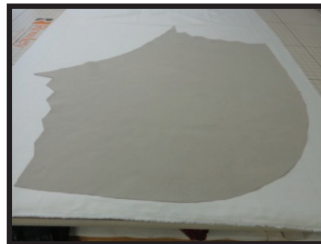


- 7** From stabilized scraps, cut two 4" x 8" facing rectangles. Set aside.  
*-Since the face fabric was cut on a bias, the interlining and lining also need to be cut on a bias.*



- 8** On the table, lay out the lining face up, then the face fabric face down. Top that with the interlining. These are all laid out on a bias.

- 9** Cut around the top and bottom layer to match the swag fabric. You do not need to cut the fingers yet.



- 10** Pin all layers together, pinning well away from the edges.

- 11** Without unpinning, lift the interlining and face fabric at the curved area. Glue-baste the lining and face layers together using small drops of glue within the seam allowance.

- 12** Glue-baste the covered sausage weight to the curve.

- 13** Glue-baste the interlining to the welt, gluing only in the seam allowance.

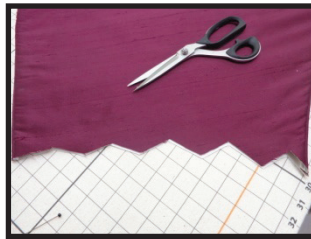
- 14** Complete the same gluing and welt layers for the top of the swag.

- 15** Once dry, machine-sew all layers together, sewing the top and bottom curve.



## Finishing the Swag:

- 1 Turn right sides out.
- 2 Press from both the front and the back.
- 3 Trim the sausage bead weight out of the welt casing at the seam allowances, cutting it back at least 1".
- 4 Trim the "fingers" so that all edges line up.
- 5 Carefully cut the interlining back to the edge of the finger scallops.
- 6 Glue-baste the interlining to the lining.



## Adding Trim:

- 1 Lay the trim on the bottom curve of the prepared swag, adjusting side to side so that the beads are evenly distributed.
- 2 Using lines of Fringe adhesive, glue the trim to the swag.
- 3 Pin in place and let dry.



## Folding the Fingers and Finishing the Top:

- 1 Following the cuts, fold in pleats.
- 2 Machine-sew across all layers, within the 1/2" seam allowance, to hold all pleats together.





- 3** Still at the machine, lay the facing rectangle of stabilized fabric right side up, then lay the pleated fingers also right sides up, matching top raw edges.
- 4** Fold both edges of the facing back over the pleats.
  - A.** The pleats should be centered on the rectangle on the 8" side.
- 5** Sew to secure all layers, sewing at the ½" seam allowance.
- 6** Flip the facing piece up, tucking in the sides and fold over to the back, tucking under any raw edges.
- 7** Hand close.
- 8** Add one drapery pin to the top, middle of the pleats at both ends of the finished swag.

