

Rowley project list: **Parsons Chair's Decorative Pillow**

This project guide will cover how to make the coordinating decorative pillow for our Parsons Chair.



MATERIALS & SUPPLIES

Rowley Products

5/32" Medium Welt Cord
Chalk Marker
Fringe Adhesive
Scissors
Classic Napped Lining
12" x 18" Polyester Cluster
Pillow Insert

SKU

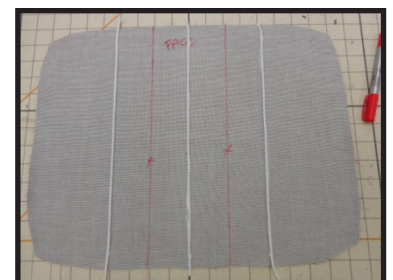
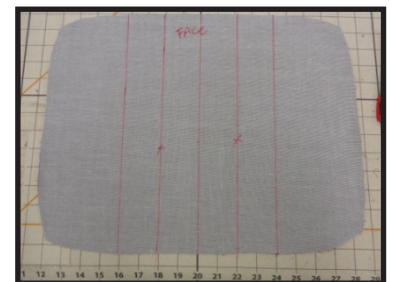
[WC10](#)
[WW13/](#)
[FA10](#)
[CU22](#)
[LN48](#)
[PJ31](#)

PARSONS CHAIR'S DECORATIVE PILLOW: STEP-BY-STEP INSTRUCTIONS

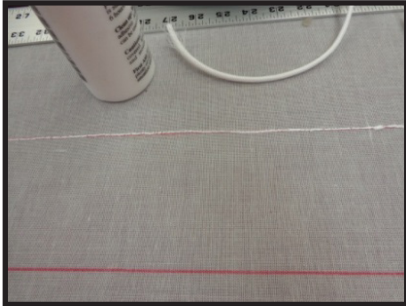
This pillow will finish out at 12" x 18".

Cutting and Prepping the Fabric:

- 1 Cut the front of the pillow at 16" x 22". This will be trimmed down later.
- 2 Cut the back of the pillow at 13" x 19".
- 3 Make enough covered welt to go around the outside of the pillow.
- 4 Decide on the pattern for the welt decoration.
- 5 Mark the back of the front, starting at the center and working toward the sides.
- 6 Lay a row of Fringe Adhesive along the lines.



- 7** Lay a pre-cut piece of welt cord over the glue.



- 8** Pin to keep it in place. Allow to dry.

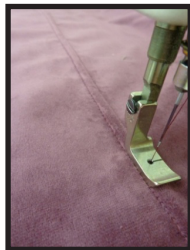
- 9** Glue a small scrap of lining over the exposed welt cords. Let dry.



- 10** At the machine, sewing on the face, sew on one side of one row of welt, from top to bottom.

- 11** Flip the fabric the other direction and sew the other side of that row of welt from bottom to top.
A. Changing sewing directions equalizes any take-up.

- 12** Complete all rows of welt.



- 13** Trim the front to match the back.

- 14** On the face piece, clip the welt out of the seam casing, clipping it back at least 3/4".

- 15** Sew covered welt to face, sewing around perimeter, joining cord as you come to it.

- 16** Place front and back right sides together.

- 17** Sew around all four sides, leaving an opening for turning.

- 18** Turn right sides out. Stuff and close.

