

Multi-Width, Double Layer Ripplefold Panels

Fabricating multi-width panels can be a challenge to plan and execute. Follow along in this how-to guide for making a six-width, double layered Ripplefold panel with pattern match and join seams that fall into the folds for a clean look.

Materials & Supplies

Rowley Products

Straight Edge Ruler

Glass Head Straight Pins

Scissors

Lead Weights, Square, Uncovered

John James Hand Sewing Needles

Jumbo Wonder Clips

Lead-Free Weights, Sausage Bead

Fringe Adhesive

Clear Ripplefold Tape

Small Stiffener for Ripplefold

SKU

[MR25](#)

[TP49](#)

[CU14](#)

[LW60](#)

[TP116](#)

[QC42](#)

[SW80](#)

[FA10](#)

[ST40/C](#)

[BT3124/N](#)

Hardware Used:

4003N Baton Draw System Track – Brown

Double Wall Brackets – Brown

Ripplefold Roller Carriers – 100% fullness – Brown

Exposed Baton Master Carrier – Brown

End Caps – Ripplefold – Brown

Finestra® Wood Fluted Fascia – Espresso

Finestra® Wood Knox End Cap Finials – Espresso

Finestra® Wood Decorative Baton – Espresso

Fascia Clips

Finial Clips

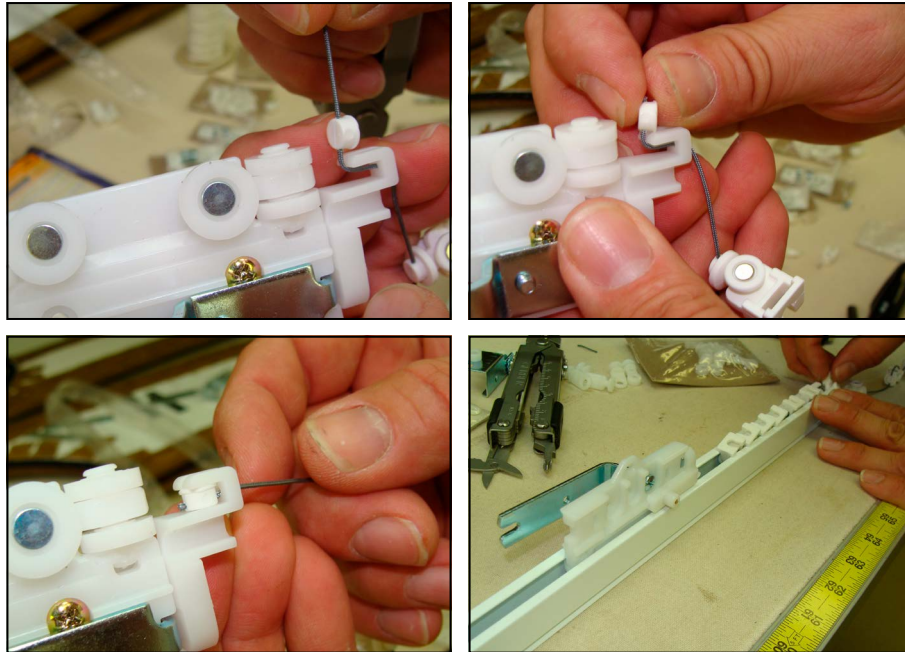


Multi-Width, Double Layer Ripplefold Panels: Step-By-Step Instructions

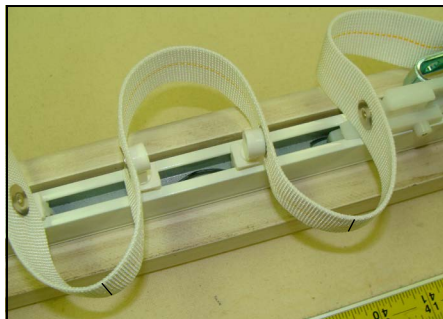
Our front panel finished at 97" long x 126" wide with a 6" return while our back sheer panel finished at 96" long x 126" wide with a 0" return. We used an exposed baton master carrier and a small stiffener.

Preparing the Track:

- 1 Cut the track to FW - $\frac{5}{8}$ ".
- 2 Load master and carriers into track.



- 3 Load snap tape onto carriers, adjusting spacing for the stiffener and the return.
 - A. Remember that the first snap will snap into the side of the master carrier.
- 4 Staple tape to keep spacing.
- 5 Mark the tape at each back fold.
 - A. This is so you will know where the join seams need to fall.



- 6 Remove the tape from the track and set aside.

Making the Front Panel:

Preparing the Pieces:

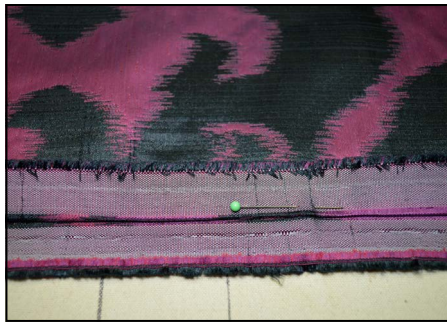
- 1 Lay out fabric to determine the first cut, according to the pattern match.
 - A. Be sure you have matches on either the top or the bottom.
- 2 Mark for Finished Length and Cut Length. Cut the first width.

3 Pattern-match the second width. Cut.

4 Cut all needed widths, matching patterns.

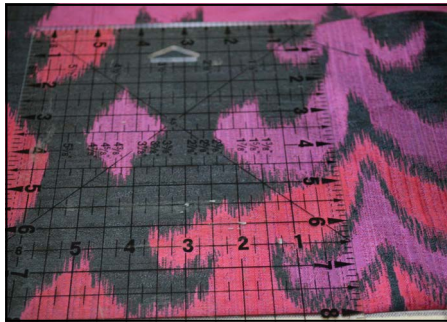


5 Match patterns at join seams and join all widths.



6 Fold under Header and footer to Finished Length.

7 At the bottom hem, fold and press in a double 4" hem.



8 Add weights to all join seams.

9 Close using your preferred method.

10 At the top, cut away excess material, leaving a 3/4" double turned header.

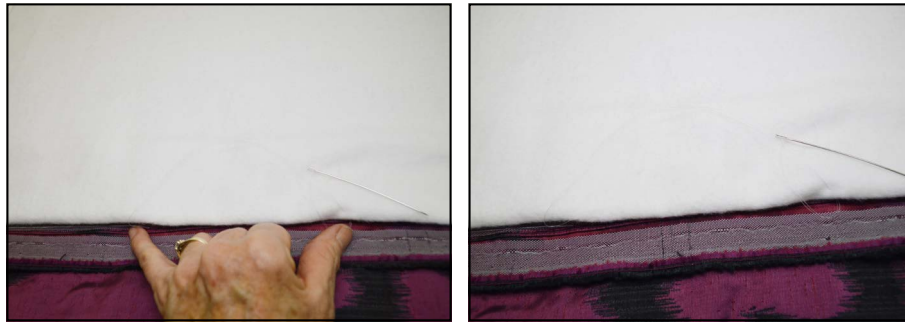


Preparing the Lining:

- 1 Cut and join widths of lining.
- 2 Fold under a double 3" hem and press. Close hem.

Finishing the Panel:

- 1 Table the face fabric face down and the lining face up.
- 2 Fold back the lining to expose the join seams.
- 3 At each seam, hand tack the lining seam to the face fabric seam about every 6".
- 4 Fold lining back into place.



- 5 Fold in the leading edge side hem, doing a double 1 1/2" hem. Press.
- 6 Add a weight and close hem using your preferred method.



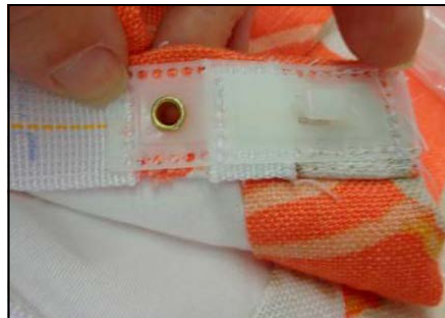
- 7 At the header, place and staple on header tape and stiffener (if using an exposed baton master carrier).
- 8 At the return side hem, remove any excess fabric, fold in and press a double 1 1/2" hem.
- 9 Add a weight and close using your preferred method.
- 10 Place then sew on stiffener and tape.



11 Snap on pendants to each snap.

12 Cut hole for stiffener baton.

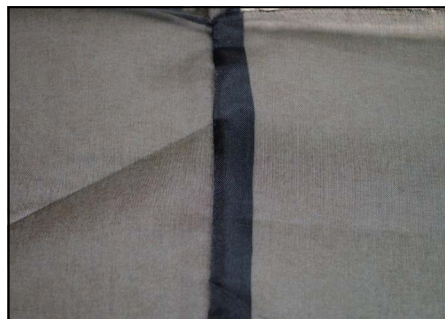
13 Load and set eyelet for stiffener.



Making the Sheer Panels:

1 Follow directions above to cut and load track, join widths, complete bottom and side hems, apply stiffener and tape.

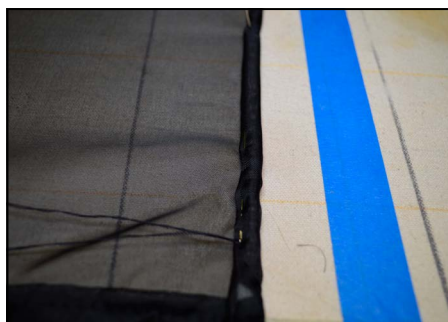
- A. To make a French (enclosed seam), start with fabric wrong sides together.
- B. Sew widths together.
- C. Fold over seam so right sides are together and sew again to enclose the raw edges.



2 To make the rolled bottom hem, glue sausage bead chain to the finished length press line.

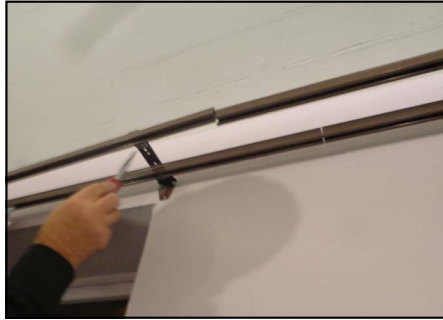
3 While the glue is still wet, roll hem twice to enclose chain.

4 Hand close.



Installing the Panels:

- 1 Measure and mark for bracket placement.
- 2 Install brackets.
- 3 Snap track into bracket and turn cam to lock.
- 4 Load fabric by snapping pendants into the carriers.
- 5 Place baton on master and lock in using the shoulder screw.
- 6 Steam and dress as needed.



Adding the Decorative Fascia:

- 1 Screw finial clips onto fascia at each end.
- 2 Screw fascia clips onto fascia about every 30".
 - A. The fascia clips cannot be placed where the brackets are installed.
- 3 Screw on finials.
- 4 Snap fascia into track, locking in each fascia clip.

