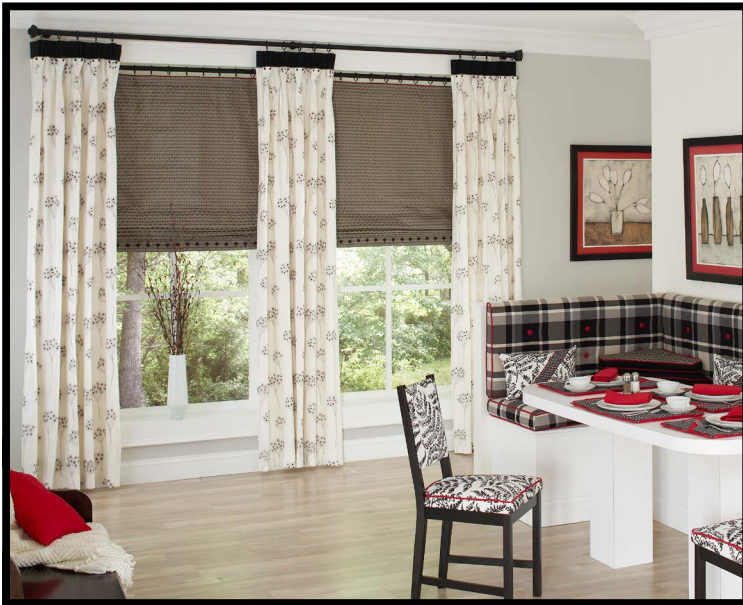


# Rowley project list: **Creative Breakfast Nook Window Treatments**

Add loads of charm to a breakfast nook with creative window treatments that keep the space bright and cozy. We dressed our breakfast nook windows with functional, flat Roman shades and stationary drapery panels with a double pleat header construction. Both treatments were installed on coordinating drapery hardware rods with rings, creating a fresh approach to this style combination.



## **CREATIVE BREAKFAST NOOK WINDOW TREATMENTS: STEP-BY-STEP INSTRUCTIONS**

This project guide covers the steps to fabricate a flat, functional Roman shade and stationary double pleat panels.

### **Stationary Panels with a Double Pleat Header:**

#### **Cutting and Prepping the Back Layer**

- 1** Cut a width of fabric down to the width needed once pleated + side hems x depth of back header + 1" for the header.
- 2** Cut a length of lining by the same width as the back layer fabric finished length - 1" + 6" for hem + 1" for header.
- 3** Sew the lining to the back layer fabric.

## **MATERIALS & SUPPLIES**

### **Rowley Products**

Classic Napped Sateen Lining  
 Micro Welt Cord  
 R-TEX Heavy Weight Interlining  
 R-TEX Lead Drapery Weights  
 Metal Upholstery Nails  
 Upholstery Nail Locks  
 Plastic Backs for Nail Locks  
 Upholstery Nail Lock Tool  
 EZ-Rig™ 4' Shade Starter Kit  
 Plastic Sew-On Rings  
 Angle Irons  
 R-TEX Pressure-Sensitive  
 Adhesive Buckram

### **SKU**

[LN48/W](#)  
[WC85](#)  
[RN12/W](#)  
[LW45](#)  
[UN20/MB](#)  
[UN11/L](#)  
[UN11/W](#)  
[MH07](#)  
[AHKK](#)  
[ST15/W](#)  
[AG15](#)  
[BNP34/B](#)

- 4 Turn right sides out so that the face fabric shows only ½" to the back.
- 5 Place a row of buckram into the header. Set aside.



### Cutting and Prepping the Front Fabric:

- 1 Cut one width of face fabric x finished length + 8" for the hem + 1" for the header.
- 2 Fold in and press the bottom hem to a double 4" hem. Add a layer in interlining to the hem to stop bleed-through to the front fabric. Close bottom hem.
- 3 Measure and mark for finished length.
- 4 Fold the excess fabric at the top down and press.
- 5 Cut and make a row of welt cord the cut width of the front fabric.
- 6 Sew the welt to the top of the front panel at the finished length fold.
- 7 Cut interlining one width x finished length – 2". Serge the bottom hem.

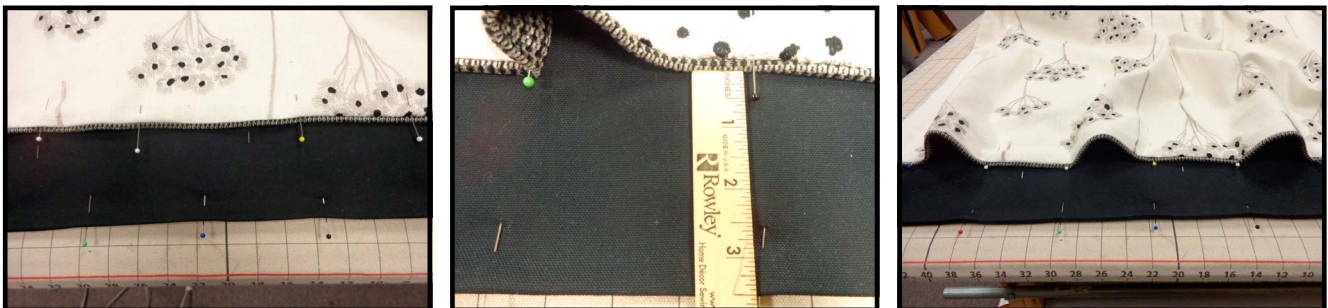


## Tabling the Panel

- 1** Lay the front fabric face down.
- 2** Lay in the layer of interlining.
- 3** Lay the back pleat header on top, making sure the amount of back pleat you planned for is above the back panel header, and aligning one side.
- 4** Fold in and press double 1 ½" side hem. Pin.
- 5** Move the back fabric to align on the other side.  
**NOTE:** You will have more fabric in the front than in the back.
- 6** Fold in and press a double 1 ½" side hem. Pin.



- 7** Add drapery weights at the corners and side hems.
- 8** Flip the panel over and mark for back and front pleats.





## Sewing in the Pleats

- 1 At the machine, fold the fabric to the pleat marks and sew in pleats, sewing down to the front header depth, sewing through all layers.
- 2 Finger pleat the back pleats and secure.
- 3 Dress the front pleats as you designed.



## Adding Decorative Nails to the Front Pleats

- 1 Flatten the sides of the front pleats and insert decorative nails.
- 2 Lock the nails in place using the nail lock tool and nail locks.
- 3 Cut the nail shank off using wire cutters.
- 4 Finish securing the bottom of the front pleat by hand tacking.



## Installing the Panels

- 1 Measure for and install the mount plates to the brackets.
- 2 Screw the brackets on to the mount plate and adjust as needed.
- 3 Load the rod with rings and finials.
- 4 Place the loaded rod in the brackets.
- 5 Load the panels onto the rings.
- 6 Complete final steaming and dressing.

## Functional, Flat Roman Shade:

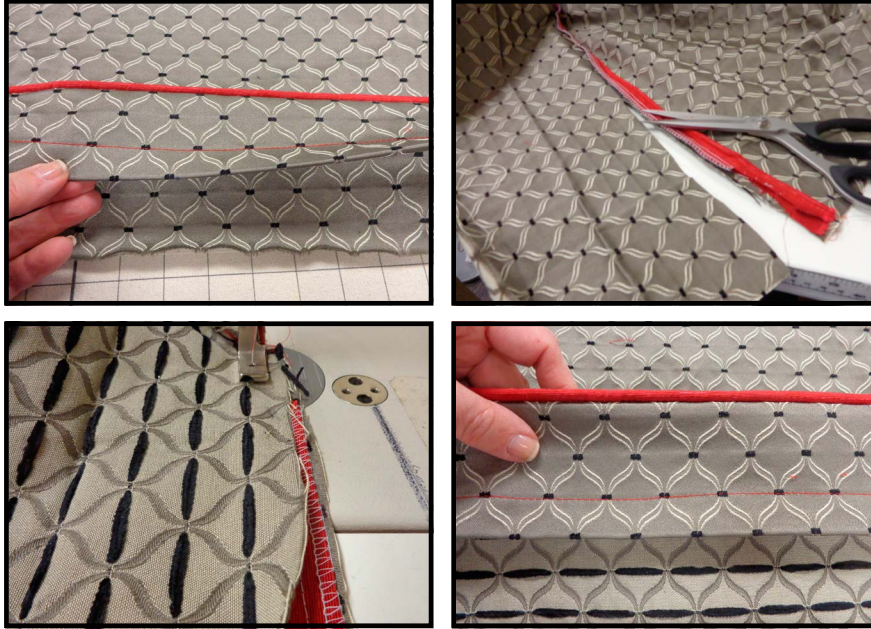
### Cutting and Prepping the Face and Lining

- 1 Cut the face fabric the finished width + 8" x the finished length + 8" (bottom hem) and + 10" (top hem).
- 2 Cut lining and interlining, if using, the finished width x finished length.
- 3 Cut and make a piece of welt cord the cut width of the shade.
- 4 Lay the shade fabric face down on the table.
- 5 Layer the interlining and lining on top.
- 6 Fold in double 2" side hems and close.
- 7 At the bottom, fold in a double 4" hem but do not close.
- 8 At the top, fold and press at finished length.

### Finishing the top for Rings

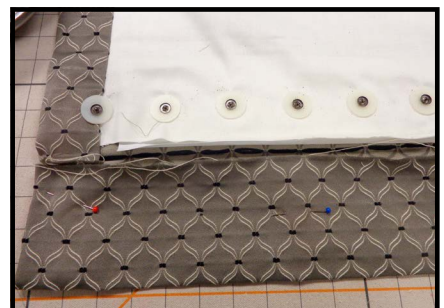
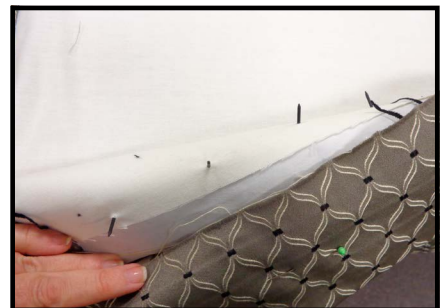
- 1 Glue-baste covered welt to the crease line for the finished length.
- 2 Sew on welt and trim the excess header fabric off.
- 3 Replace the excess header fabric and sew, joining it to the shade and welt cord.

- 4 About 3" down, stitch a 1" pocket for the dust board mounting area.
- 5 Refold the top hem but do not close yet.
- 6 Add a layer of buckram and pin closed.



## Finishing the Bottom of the Shade

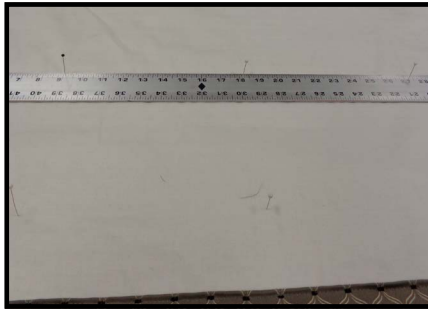
- 1 At the top fold of the hem, sew in a 1" pocket for the weight bar.
- 2 Add a layer of stiff buckram to the hem, laying the buckram against the back of the face fabric.
- 3 Mark and insert decorative nails.
- 4 Lock nails in place with the nail lock tool, nail locks and nail lock washers.
- 5 Cut the back shanks off the nails.
- 6 Refold hem but do not close yet.





## Adding Encased Lift Cord

- 1 Measure for lift cord placement.
- 2 For all rows: Sew on bottom rings.
- 3 Hand tack encased lift cord to shade at marks.
- 4 At the top, pull the cord from the shroud and run the empty shroud up to the header.
- 5 At the bottom, pull the cord out of the shroud and tie to bottom ring. Run the empty shroud tube down under the hem.

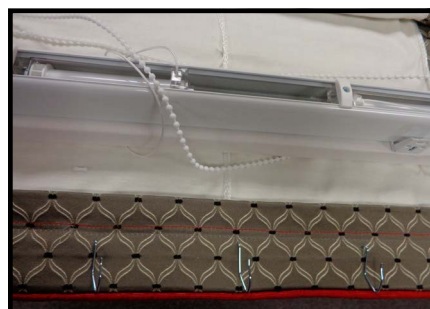


- 6 Close the top and bottom hem.
- 7 Add the weight bar to the bottom hem.
- 8 Hand-close the sides of the bottom hem.



## Finishing the Shade with Rings

- 1 Add drapery pins to the top of the shade – one for each ring needed.
- 2 Assemble the lift system and mount to a dust board.
- 3 String the lift system.



## Installing the Shade

- 1 Install inside mount brackets, rod and rings.
- 2 Load shade onto rings.
- 3 Measure down for dust board installation placement.
- 4 Install angle irons at the bottom of the dust board measurement.
- 5 Lifting the shade out of the way and popping the shade out of the head rail, screw the bottom of the dust board to the angle irons.
- 6 Replace the head rail, install tension device and dress the shade.

