

Medallion Hung Arched, Pleated Panels

Medallion treatments are perfect for arched windows and can be traditional or modern depending on fabric and materials used. We've installed our Elaborate Entryways arched drapery treatment on medallions from the AriA Antiquities 1 3/8" metal collection and used finials to create custom holdbacks using the new Finial Wall Mount Adaptor.



Materials & Supplies

Rowley Products

- R-TEX Heavy Weight Interlining
- Hanes Classic Napped Lining
- Glass Head Straight Pins
- Drapery Weights
- Pattern Making Paper
- Sausage Bead Weight Chain
- Sealah No-Sew Adhesive Tape
- R-TEX Micro Welt Cord
- John James Hand Sewing Needles
- Gutermann Polyester Thread
- R-TEX Hook Tape, Sew-On - 1" Beige
- R-TEX Loop Tape, Sew-On - 1" Beige
- Professional Shears / Scissors

SKU

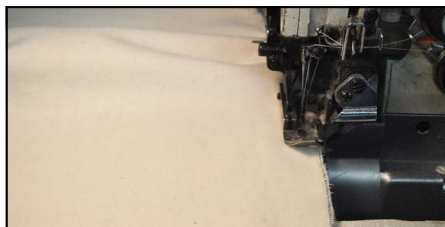
- [RN12/](#)
- [LN49/](#)
- [TP49](#)
- [SW37](#)
- [DYC18/](#)
- [SW80](#)
- [SLT50/](#)
- [WC85](#)
- [TP116](#)
- [TG1M/](#)
- [HT100/B](#)
- [LT100/B](#)
- [CU22](#)

Medallion Hung Arched, Pleated Panels: Step-By-Step Instructions

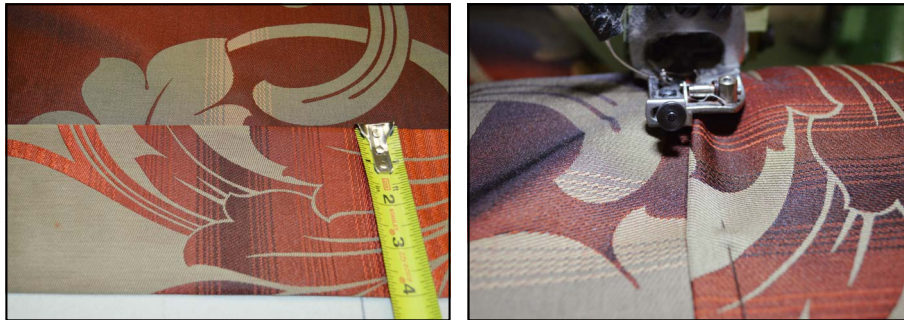
This how-to guide covers the steps to plan, fabricate and install the arched pleated panel, using decorative medallions.

Cutting and Prepping the Face and Lining:

- 1 Cut interlining to CL - join widths.
- 2 Serge bottom hem.
- 3 Cut lining to CL - join widths.
- 4 Fold in a double 3" bottom hem. Press and close.



- 5 Cut face fabric to CL – join widths matching patterns at seam.
- 6 Fold in and press a double 4" bottom hem.
- 7 Add drapery weights at join seams. Close bottom hem.



Decide on Pleat Pattern:

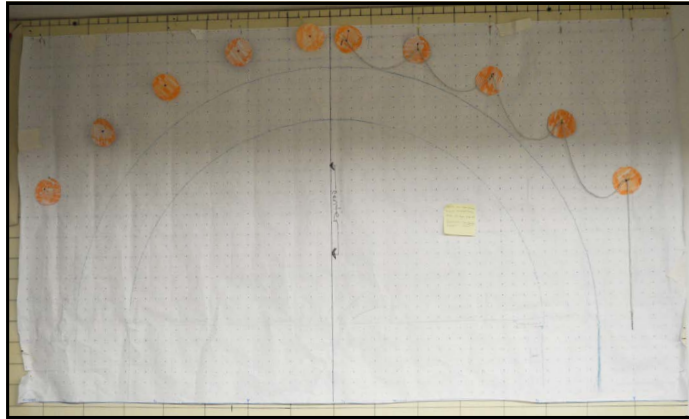
- 1 Look at fabric to see if it can be pleated to pattern.
- 2 Mark width(s) for side hems, returns and pleats.



Finding the Swoop for the Spaces:

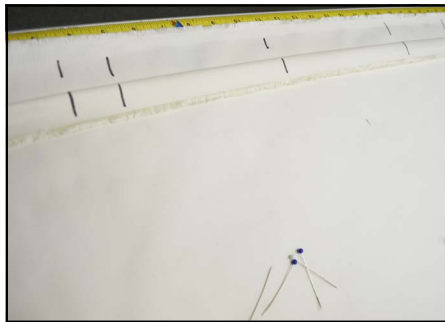
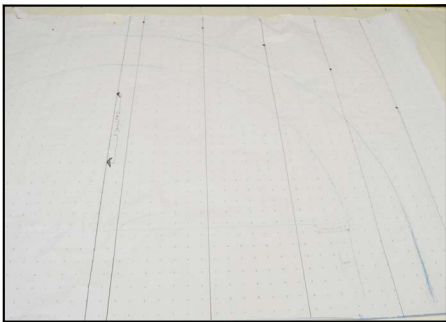
- 1 On the template mark for medallion placement.
 - A. It helps to mark the true size of the medallion base and front.

- 2 Drape a Sausage Bead Chain between medallions to find the desired swoop.
- 3 Measure and mark chain for space drop.

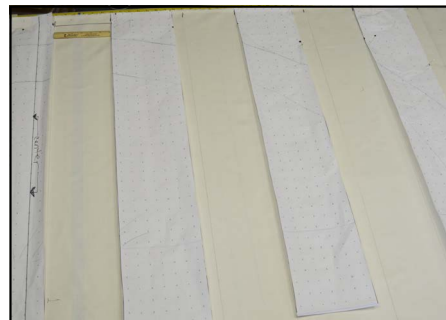


Adjusting the Template for Cutting:

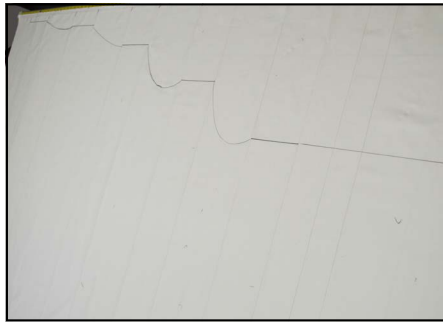
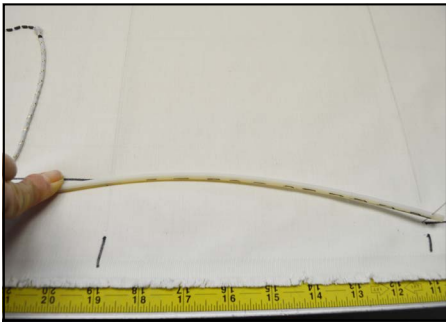
- 1 Back on the template, mark the medallion placement according to the math spacing.
- 2 Cut the same width out of lining to be used as a pattern.
- 3 Transfer marks from template to lining pattern.
- 4 Fold the lining pattern in half, right sides together so bottom meets top.
- 5 Mark the bottom of the pattern from the top marks.
- 6 Connect the lines from top to bottom.



- 7 Cut the paper template apart on the lines.
- 8 Lay paper template pieces on the lining pattern.
- 9 Pin template to lining pattern and double check math.



- 10 Transfer swoop marks to the lining pattern; mark all swoops. Pleats are marked with horizontal straight lines.
- 11 Cut the top of the pattern to the shape, plus seam allowances.
 - A. When you are done with this step, tape the paper template back together to be used as an installation guide.
- 12 Hang the lining pattern, folding in pleats and recheck swoop depths and pleat spaces.

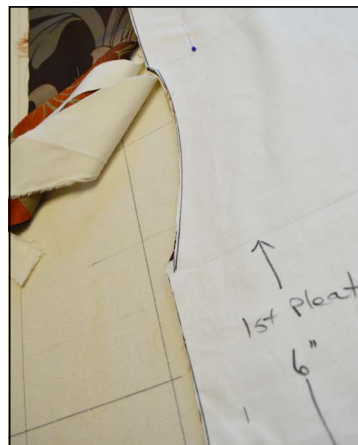


Making the Panel:

- 1 Layer interlining, lining and face fabric on table.
- 2 Lay out lining pattern on top of the face fabric.
- 3 Pin well.
- 4 Pin lining pattern to entire length of fabric layers.



- 5 Mark the top of the face fabric to the shape of the lining pattern.
- 6 Cut top plus seam allowances to new shape.
- 7 Pin well.



- 8 Keep the cut off fabric as it can become the back facing for the opposite panel.
- 9 On the back facing, turn under 1/2" on the long straight edge and prep using Sealah Tape or Iron-On Bonding Tape.
- 10 Slip the prepared back facing between the face and the lining.



- 11 Cut and make welt cord.
- 12 Place welt in seam and sew through all layers attaching all layers together at once.
- 13 Trim seam allowances and clip curves.



- 14 Turn panel right sides out and press the top and facing.
- 15 Complete attaching the back facing by removing paper and ironing.



Finishing Up the Panel:

- 1 Place lining pattern on face fabric.
- 2 Transfer marks for pleats and spaces.
- 3 Add drapery weights at the bottom corners.



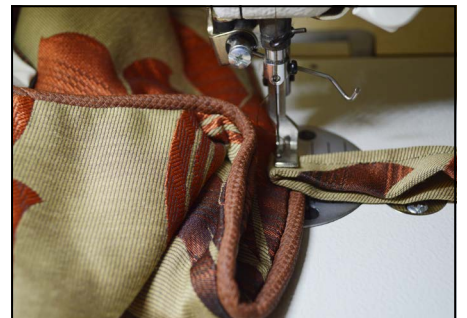
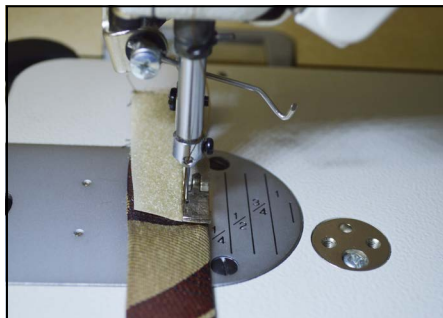
- 4 Turn under and press in a double 1 1/2" side hem on both sides.
- 5 Close side hems.



- 6 Pin in the pleats but do not sew them yet.
- 7 Recheck all against the paper template for accuracy.



- 8 Cut and make ties, adding hook and loop to the ends.
- 9 Attach medallion ties inside the pleat area.



10 Sew in pleats.

11 Finish pleats as designed.

