



# WINDOW TREATMENT MASTER CLASS



HOW-TO GUIDE

## PILLOW EDGES

Why to use a different kind of finish based on the pillow, the fabric or the design style.

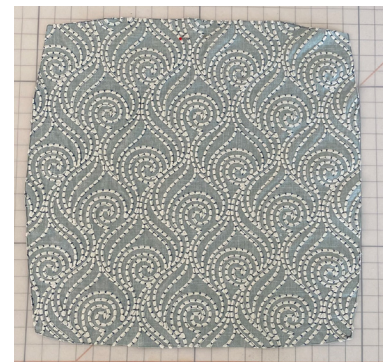
ROWLEY PRODUCTS	ITEM #
Pillow Template, Tapered Corners	<a href="#">PF08</a>
Pillow Template, Standard	<a href="#">PF10</a>
R-TEX Pillow Stuffing - Polyester Fiber	<a href="#">PF91</a>
Pillow Inserts	<a href="#">Pillows</a>
Invisible Zipper Chain	<a href="#">EVR32/</a>
Invisible Zipper Slides, Nylon	<a href="#">EVP3/</a>
Zippers by the Roll	<a href="#">ENR25/</a>
Zipper Slides, Non-Locking	<a href="#">ENP2/</a>

In this guide you will learn three different pillow edges for beautiful pillows. While this only touches the surface of all the creative edges, this will get your creative juices flowing for your pillow projects. You will also learn when to taper pillow corners and when it is best not to taper the corners.

FOR MORE INFORMATION ON TO TAPER OR NOT TO TAPER PILLOW CORNERS, READ DONNA'S BLOG HERE:

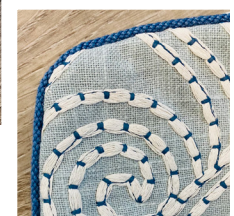
[BIT.LY/PILLOW-DOG-EARS](https://bit.ly/pillow-dog-ears)

- 1 Beautiful pillows begin with pattern placement. When using fabric with a design, use a pillow template to decide the pattern placement. Some fabrics are tricky so you may need to adjust before cutting and sewing.
- 2 For the knife edge pillow in this example, the PF08 Tapered Corner Pillow Template was used. It automatically removes the 'dog ears' and nicely tapers the pillow's corners.
- 3 When planning the fabric cut size, measure from seam to seam on the pillow insert.
- 4 Mark and cut the fabric the for the finished pillow cover size you are making. Remember on the tapered corner pillow template, the seam allowance is already figured in on the sizes marked on the template.
- 5 If you closely look at the two pillow cuts of fabric, you will notice they are slightly different. The photo on the left has the pattern centered more correctly than the photo on the right. Just a slight shift in the cutting of the fabric makes a difference to the overall pillow design.



# PILLOW EDGE 1: Contrasting Decorative Braid Cord

- 1 For this pillow, a contrasting 1/8" contrasting decorative braid cord was used as a pop of color to bring out the darker blues in the drapery fabric.
  - 2 Look at the seam along the edge of the tapered corner pillow. The pattern match is achieved by correcting the pillow cut as shown in the previous photos. This is a true sign of high quality custom-made pillow designs.
  - 3 An invisible zipper next to welt cord was the closure method for these pillows.
  - 4 A common fear when sewing invisible zippers next to welt cord is trying to get close enough to the zipper teeth that the zipper tape does not show. In actuality, the welt cord will roll over the zipper tape so that it doesn't really show.
- Watch this YouTube video where Donna shows how easy it is to insert invisible zippers next to welt cord:  
[bit.ly/Inv-Zip-Welt](https://bit.ly/Inv-Zip-Welt)
- 5 When an invisible zipper is sewn well, the only thing that shows is the zipper pull. And sometimes it's even hard to find it at all.
  - 6 One last TIP when using the tapered corner pillow template: the pillow forms fill out the corners very nicely due to the taped edges.



# PILLOW EDGE 2: Stitched Flange

1 Not all pillows have stitched welt around the edges. For this rectangular shaped pillow in a beautiful embroidered fabric, a simple stitched flange is used.

2 Always map out the pillow repeat design.

3 Take photos of the possible designs and look at those prior to cutting the fabric. Sometimes the difference is slight, other times, it is quite noticeable.

4 For this pillow design we chose to use the option on the right, but either one would have been a good choice.

5 The fabric cut size for a pillow with a stitched flange is the pillow body size (without the flange) plus the flange size times two plus the seam allowance size times two.

So, for a 18" x 12" finished pillow body, with a 1/2" flange, and a 1/2" Seam Allowance (SA), the cut size equals, 20" x 14".

6 The closure method for this pillow was a flap style zipper. This gave the appearance of having a stitched flange along the bottom of the pillow.

Look closely above where you will see the zipper pull. This may be hidden under the flap but is pulled out as an example for this zipper method.

7 Sewing this pillow is simple with only a pillow front and a pillow back. The pillow edges inside the pillow will be encased by the stitched flange, so it is not necessary to serge for a clean finish. However, the bottom edge where the zipper will be sewn should be serged prior to inserting the zipper.

- To create the stitched edge, turn the stitched pillow with the zipper stitched, right sides out and press the edges.
- If you wish, pin the three edges to hold both layers in place. Sew around the two sides and the top, sewing a 1/2" flange.
- If necessary, press the pillow cover.
- Insert your pillow form and enjoy your pillow creation!



4



# PILLOW EDGE 3: Fringed using the Warp & Weft of the Fabric

1 Using a fabric with texture and a weave where the threads are easy to pull is best for this style. Cutting the fabric square, not with tapered corners is necessary to create this design.

2 Determine the finished size of the pillow cover.

Determine the fringe size you want to create.

Add these two together to figure the fabric cut size.

3 Cut the pillow front and back.

4 Begin by pulling the threads one or just a few at a time along all four edges until you have the fringe size desired.

5 Sew a stay stitch around all edges of the pillow front and back to keep additional threads from coming loose.

6 Pin the pillow front and back together, right sides out.

7 Stitch around the pillow, keeping a hole in the bottom open for turning.

8 Insert the pillow form and stitch the hole closed.

