

Oval Back Chair with a Hand-Beaded Back

Hand beading and unique trims offer your customers something they truly cannot get anywhere else. In our Oval Back Chair, we've incorporated stylish welt cord trims and metal bead chain on the back for a one-of-a-kind accent chair.



Materials & Supplies

Rowley Products

#10 Metal Bead Chain – Nickel
Polyester Upholstery Batting
R-TEC Upholstery Air Stapler
71 Series Staples - 3/8"
Scissors
R-TEX Black Cambric
R-TEX Polyester Welt Cord - 1/4"
High Temperature Glue Gun
High Temperature Glue Sticks
Side Cutter

SKU

[BCH10](#)
[PF76](#)
[NSG10](#)
[NS33/E](#)
[CU22](#)
[PA40/](#)
[WCP2/](#)
[DT50](#)
[DT55](#)
[MH18](#)

Other Materials Needed:

Medium Grit Sandpaper
Loctite® Glue
Water Based KILZ®
Paint Color
Paint Sealer

Oval Back Chair with a Hand-Beaded Back: Step-By-Step Instructions

Follow along with this how-to guide for full upholstery steps and tips for adding decorative trims and hand-beaded details.

Preparing the Chair:

- 1 Remove all old trim, fabric and padding.

- 2 Sand surface with a medium grit sandpaper to remove rough spots and dirt.
- 3 Glue joints as needed using Loctite® glue. Let dry overnight.
- 4 Spray entire frame with a layer of KILZ®. Let dry overnight.
- 5 Spray entire frame with two to three coats of paint, letting dry completely in between coats.
- 6 Spray on sealer coat. Let dry.



Cutting the Fabric:

- 1 Measure chair for fabric pieces, measuring tallest and widest areas.
- 2 Measure for welt cord needed.
- 3 Cut Outside Back (OB).
- 4 Cut Inside Back (IB) to match OB piece pattern.
- 5 Cut Seat (ST) to waterfall from IB piece.
- 6 Mark all pieces with "UP" and area.
- 7 Cut bias strips of fabric for welt cord.
- 8 Join strips and make welt cord as usual.



Upholstering the Seat (ST):

- 1 To create a new crown, place a small piece of batting in the center of the seat.
- 2 Place larger piece on top of the smaller one.
- 3 Finally, wrap the entire seat in a layer of batting, stapling to the sides.
- 4 Remove any excess batting that falls under the seat.
- 5 Place seat fabric on seat and determine best pattern placement.
 - A. Remember, you will need to be able to line this up to the IB and OB.



- 6 Pull fabric under seat and staple, first stapling North-South-East-West to secure pattern.
- 7 If pattern is good, continue to staple sides, leaving corners for last.
- 8 Decide on pleat pattern for corners and staple.
 - A. Make all four corners match.
 - B. Remove as much bulk as possible.



- 9 For the arm cutouts, make a “peace sign” relief cut going up to the opening.

10 Fold and staple the sides to the bottom of the frame.

11 Leave the "V" as is.



12 Using a scrap of fabric that has a 90% pattern match to the area, fold under edges and tuck into opening.

13 Make relief cuts on bottom, tuck under and staple.

14 On the top, trim to ½", tuck under and hand close using a curved needle and heavy thread.

A. This should be down far enough that it will not show once the seat is placed back on the chair.



15 Staple on a double layer of black cambric to the bottom, trimming away excess as you tuck the edges under.

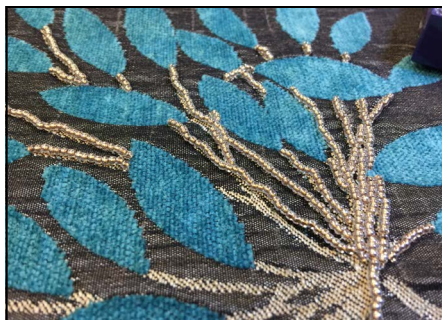
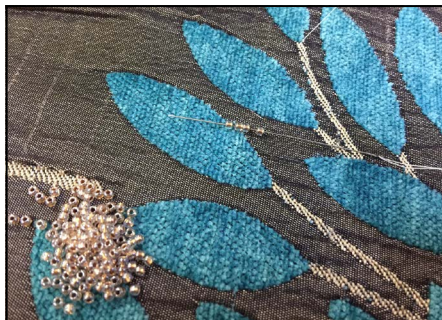


Upholstering the Outside Back (OB):

- 1 Place fabric face down, centering pattern.
- 2 Mark placement on the back of the fabric.



- 3 Complete hand beading.
 - A. Place the fabric, centered, in a hoop for consistent tension.
 - B. Load needle with two arm's length of thread.
 - C. Come up from the back to the start point.
 - D. Load three to five beads on the needle and push the bead down through the fabric.
 - E. Push the needle down at the end of the beads.
 - F. Come back up between the last two beads, thread through the last bead and go down through the fabric again.
 - G. Repeat until done.



- 4 Once the beading is completed, place back on the chair, adjusting for pattern placement.
- 5 Staple to inside of OB opening, stapling from the inside of the chair.
- 6 Staple near the edge but not right up tight to the edge of the frame opening.
- 7 Tuck in excess fabric to help pad out IB and protect beading threads.



Upholstering the Inside Back (IB):

- 1 Create a small crown with layers of batting.
- 2 The last layer of batting needs to cover all smaller layers and stay within the frame stapling area.
- 3 Staple and trim in small areas at a time.
- 4 Complete stapling and trimming.



- 5 Place fabric so the ST is a continuous pattern flowing from the IB to the ST.
- 6 Trim edges and tuck under, completing a small area at a time.
- 7 Continue to staple until IB is completed.



Upholstering the Arms:

- 1 Replace batting on arms, keeping it within the staple area.
- 2 Place fabric on arms and trim to size plus 1" all around.
- 3 Make relief cuts as needed to follow curves, tuck under edges and top staple.

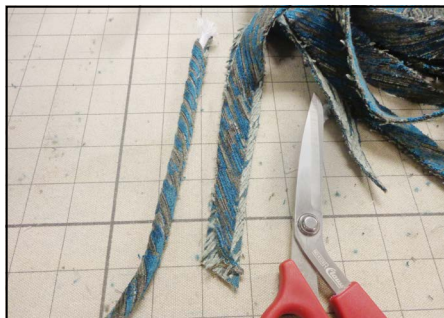


*At this point the chair is upholstered. All we need to do is add decorative welt to cover the top staples. Place seat in frame and screw down.



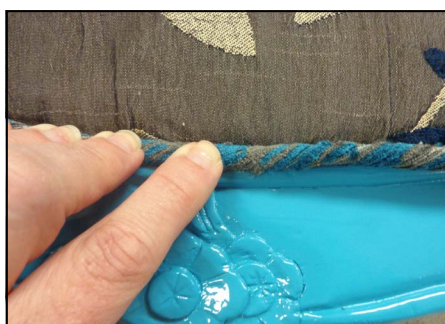
Adding the Decorative Welt and Bead Chain Trim:

- 1 Trim welt lip to $\frac{1}{8}$ ".



2 Place welt on top of staples, placing the welt lip in the ditch created by the staples.

3 Hot-glue the welt in place, making a join at the bottom just off center.



4 Do the same around the arm fabric.



8 Glue a row of metal bead chain to the inside of the welt on the IB and the Arms.

9 When you come to a join, cut chain to length and glue.

