

One-Of-A-Kind Beaded Pillows

Decorative throw or bedding pillows are an easy way to transform a room with minimal cost + make a great upsell item. See how we've incorporated unexpected materials like metal bead chain in our beaded pillows from the Stylishly Curated Living Roomscape.

Materials & Supplies

Rowley Products

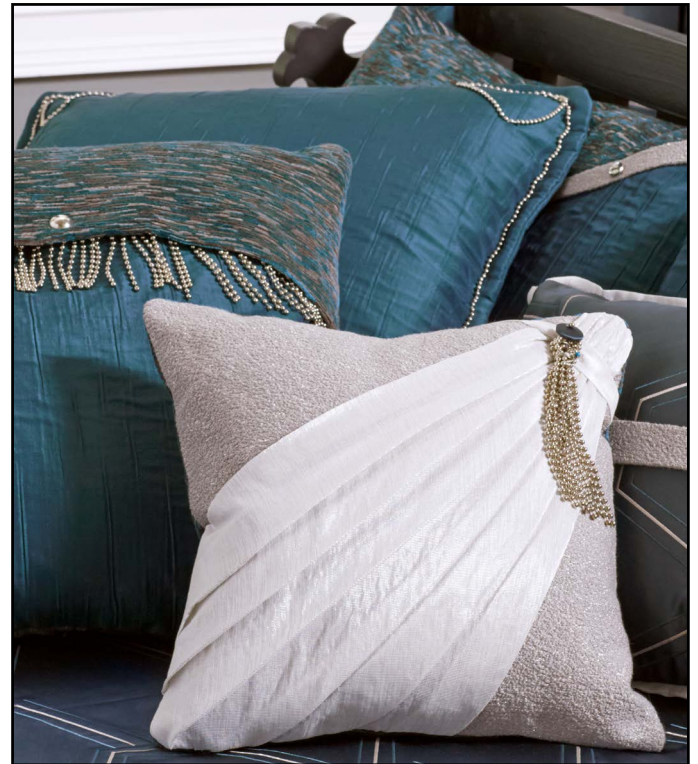
- #10 Metal Bead Chain - Nickel
- Down/Feather Pillow Inserts
- Acrylic Gem Upholstery Nails
- Upholstery Nail Lock with Cap
- Bias Tape Maker
- R-TEX Iron-On Bonding Tape - 1/2"
- Invisible Zipper Chain - #5 - Gray
- Invisible Zipper Slides - #5 - Gray
- Glass Head Straight Pins
- John James Hand Sewing Needles
- A&E Upholstery Thread
- Thread Clipper
- Pillow Template - Standard
- Pillow Template - Tapered Corners
- Pen Style Chalk Markers
- Wood Ruler - 6"
- Sealah No-Sew Adhesive Tape
- Flat Worktable Weights
- Basting / Tacking Gun
- R-TEX Cotton Welt Cord - 1/4"
- Fringe Adhesive
- W&I Hampton Cotton Interlining
- Side Cutter

SKU

- [BCH10](#)
- [FDXX/10](#)
- [UN25/NS](#)
- [UN11/B](#)
- [WWT24](#)
- [FT50](#)
- [EVR52/G](#)
- [EVP5/G](#)
- [TP49](#)
- [TP116](#)
- [TU6K/](#)
- [WW20](#)
- [PF10](#)
- [PF08](#)
- [WW13/](#)
- [MR6](#)
- [SLT50/](#)
- [QC20](#)
- [ST26](#)
- [WCC2/](#)
- [FA10](#)
- [LNW10/](#)
- [MH18](#)

Other Materials Used:

- Blue Painter's Tape



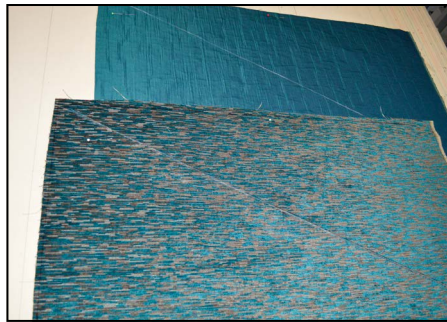
One-Of-A-Kind Beaded Pillows: Step-By-Step Instructions

Get fabrication steps for 5 different pillow designs in this how-to guide.

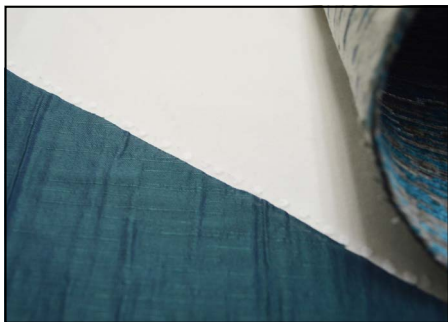
Dual Field Pillows with Curved Banding and Decorative Nails:

Preparing the Pieces:

- 1 Cut 2 pillow tops and 2 bottoms to full size.
- 2 On one set, mark from top left to bottom right.
- 3 On the other set, mark from bottom left to top right.

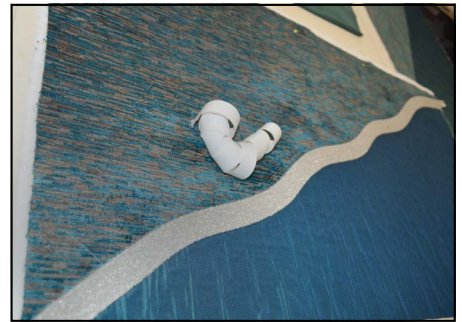
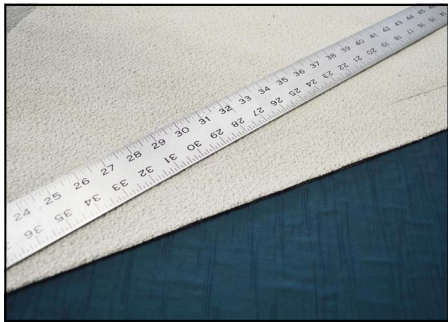


- 4 Cut both sets on the lines.
- 5 Arrange into front face pattern – set non-used pieces aside.
- 6 For each set, glue-baste them to a layer of interlining so the bias cuts touch.
- 7 Let the glue dry then trim to size plus seam allowances.



Putting the Pillow Together:

- 1 Cut and make bias tape with iron-on bonding tape applied to the back.
- 2 Remove bonding tape back and place on pillow front to cover bias cuts.
- 3 Iron down to secure.



- 4 Serge around all raw edges on front and back.
- 5 Place right sides together.
- 6 Insert an invisible zipper into the bottom seam.
- 7 Complete sewing front to back.
- 8 Turn right sides out.



- 9 Add decorative nails.
- 10 Trim shank and lock on with nail locks with caps.



Flanged and Banded Pillow:

Preparing the Pieces:

- 1 Cut front and back to size, plus seam allowances.
- 2 Cut and make bias banding.
- 3 Add a row of iron-on bonding tape to the back of the band.
- 4 Fuse band to center of front and back.



- 5 Cut four bias strips for flange, cutting them at least 2" longer than the pillow sides.
- 6 Fold in half, lengthwise and iron to set a crease.



Putting the Pillow Together:

- 1 Tuck in raw edges and place on side of pillow, starting and stopping in 1/2".
- 2 Sew each strip to the pillow front, overlapping at the corners.

3 Complete all four sides.



4 Place right sides together and insert an invisible zipper into the bottom seam.

5 Complete sewing front to back.

6 Turn right sides out.



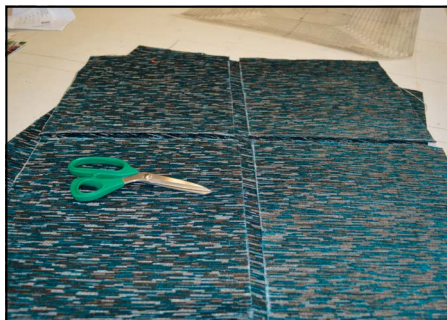
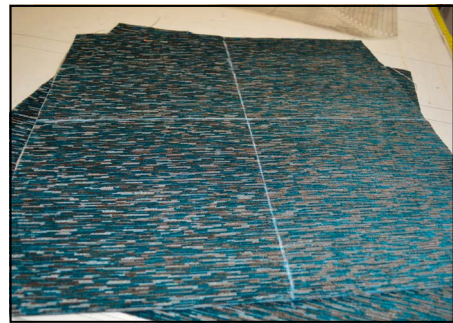
Decked Out Envelope Pillow:

Preparing the Pieces for the Back:

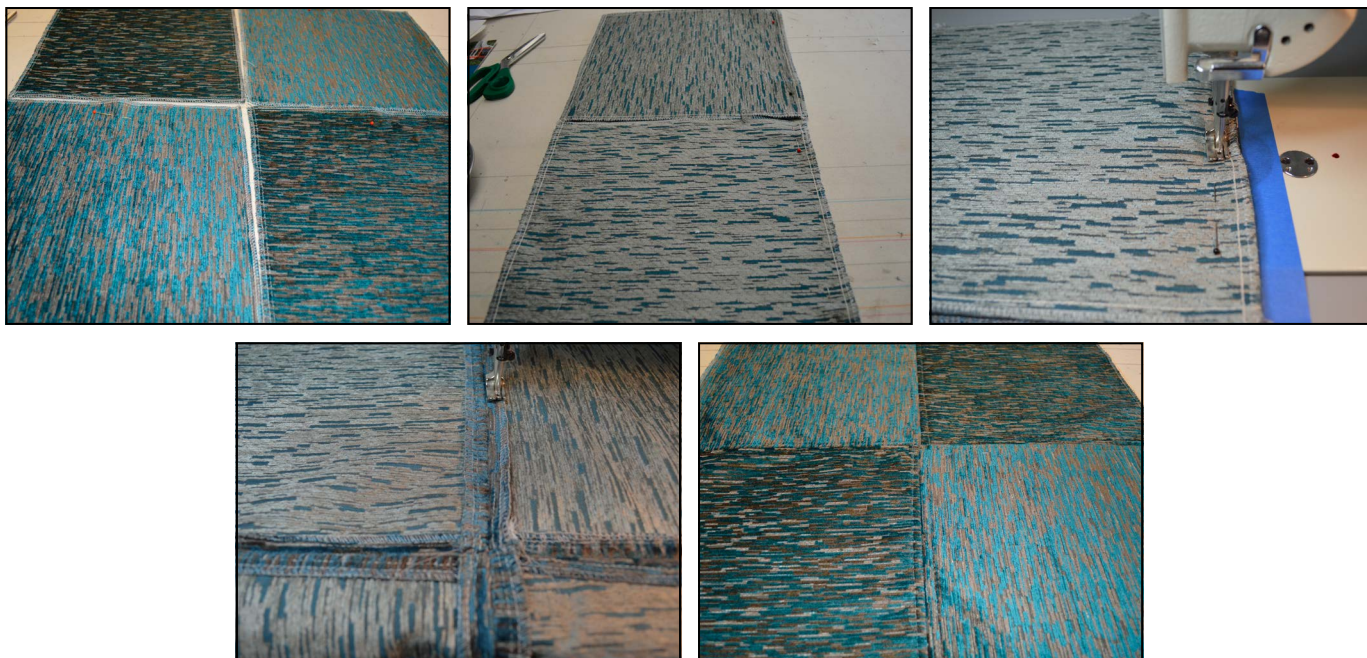
1 Cut back to size, plus 1" all the way around.

2 On the back, mark at quarters.

3 Cut apart quarters and arrange so top left and bottom right nap is the same.



- 4 Paying attention to the nap pattern, sew two sets of two pieces together then join those two pieces for a completed 4 quarter back.
- 5 Open all seams on the back and eliminate bulk at the center.
- 6 Press seams open.
- 7 Top stitch on each side of each seam, catching the seam allowances.



- 8 Your back piece should now measure the same as the front piece.

Preparing the Front Piece:

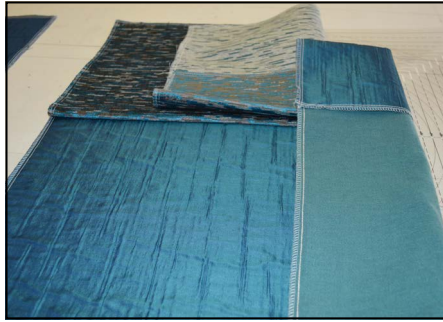
- 1 Cut the main front fabric to size plus seam allowances.
- 2 Cut the top front piece to at least $\frac{1}{3}$ the length x same width as main fabric.
- 3 Serge all edges on all pieces.



- 4 Lay bottom face right sides up on the table.
- 5 Lay top piece on top of the top of the bottom piece.

6 Fold under the bottom of the top and the top of the bottom so there's a 3" - 5" overlap.

7 Press to set creases.



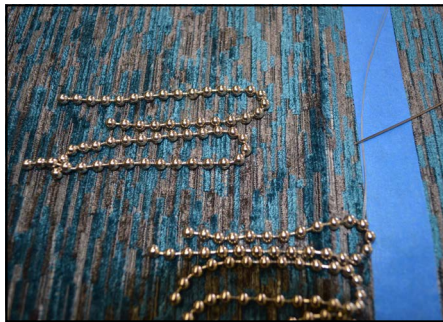
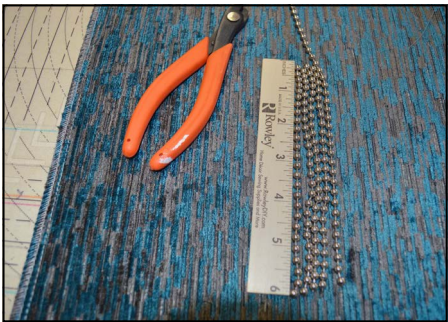
8 To set the placement of the bead chain fringe, unfold the top piece and place a row of painter's tape about 1" above the crease line.

9 Cut lengths of metal bead chain to 6".

10 Fold each bead chain piece in half and butt up against the blue tape.

11 Hand sew to secure chain.

12 Use a row of sealah no-sew adhesive tape to secure the folded flap back in place.

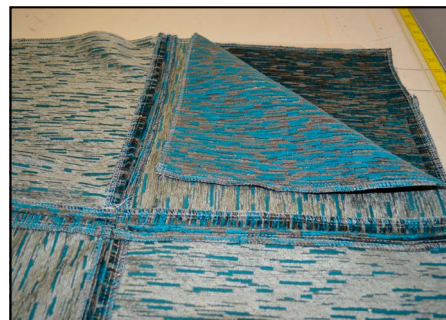
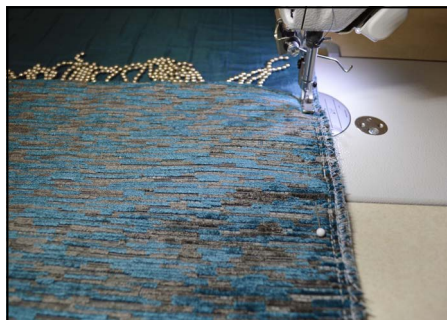


Putting the Pillow Together:

1 Secure front top and front bottom together at side seams, tucking in bead chain.

2 Place right sides together and join around all four sides.

A. This pillow will be stuffed through the envelope opening.



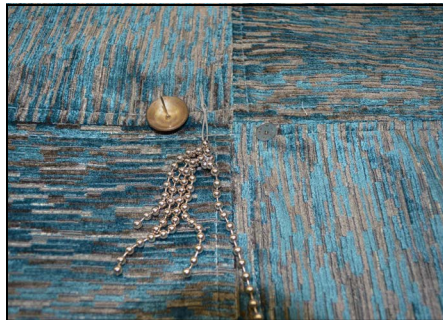


- 3 Turn right sides out.



Adding Decorative Nail Detail:

- 1 On the back, push a decorative nail through the back layers at the center.
- 2 From the inside, push the nail tight against the fabric and cut shank to $\frac{1}{8}$ " past fabric depth.
- 3 Snap on a capped lock.



Silk Wrapped Pillow with Hand Made Tassel:

Preparing the Front:

- 1 Cut front and back to size plus seam allowances.
- 2 Cut the silk pleat fabric to 2x length and width of front.
- 3 Gather one corner of the silk and lay it on one corner of the front.
- 4 Hand sew the layers together, sewing within the seam allowance.

5 Place a table weight on the sewn corner to hold it in place.



6 Pleat the top area, pinning as you go, folding under raw edges.

7 Hold top pleats with a tag gun, removing pins as you tag.



8 Hand sew top pleats where you tagged.

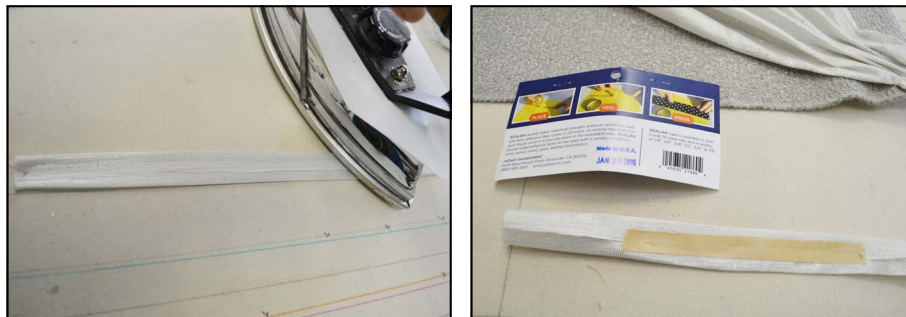
9 Cut and make a bias strip wide enough to cover the tags.



10 Add a row of sealah no-sew adhesive tape to the back of the strip.

11 Place prepared strip over tags.

12 Remove back paper and iron down, covering hand tacking.



13 Complete pleating down the silk piece, fanning to cover corner evenly.

14 Pin and press well.

15 Remove excess silk and serge around all four edges.



Finishing the Pillow:

1 Insert an invisible zipper in the bottom seam.

2 Finish sewing front to back.



3 Turn right sides out.

4 Add a decorative bead chain tassel just under the band securing with a decorative button.



French Mattress Pillow with Bead Chain Detail:

Preparing the Pieces:

1 Cut front and back to size plus seam allowances, using the pillow template - tapered corners.

2 Lay out bead chain pattern on the same size pillow using the pillow template - standard. Cut chain to length plus a few inches.



3 Lay fronts and backs on a layer of interlining.

4 Glue-baste front and back to interlining.

5 Trim to size and serge around all four sides.



Putting the Pillow Together:

- 1 Insert an invisible zipper into the bottom seam.



- 2 Sew pillow front to back.
- 3 Within the seam allowances, place a row of welt and sew along outside edge of seam allowance to encase welt.
- 4 Turn right sides out.
- 5 Hand stitch, using a large, long running stitch, the mattress sides in.
 - A. Stitch both sides if the zipper end individually.



Adding the Decorative Bead Chain Detail:

- 1 Lay bead chain into ditch caused from the hand tacking.
- 2 Hand tack bead chain in place, making corner detail as you go.
 - A. Be sure to only sew through the front layer.

