

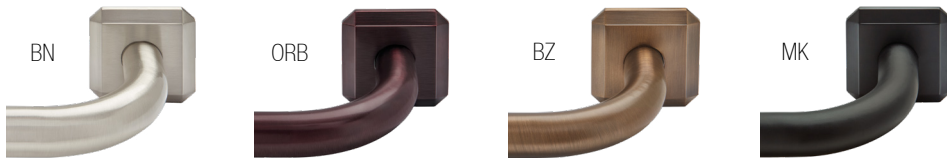
French Returns



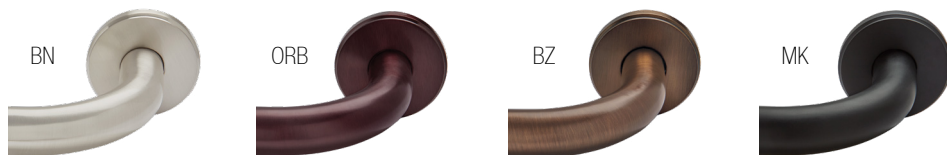
Our curved 1 1/8" French Return elbows with stylish mounting plates allow panels to wrap all the way to the wall for a clean transitional look and can be paired with our French Return Bands to help reduce sidelight.

choose from 4 on-trend metal finishes and 2 mounting styles:

Faceted Square Mounting Plate, 4" and 6" projection - FM118440/

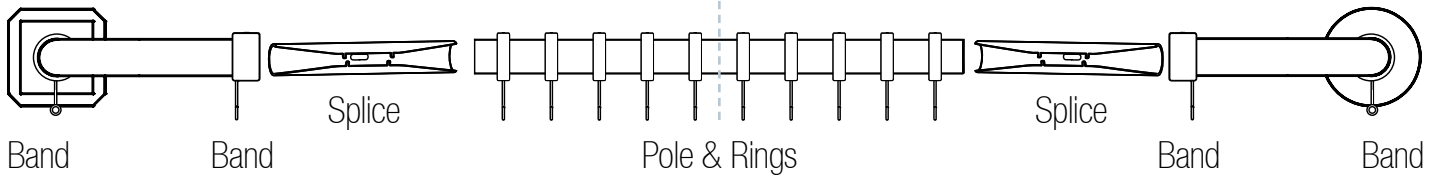


Beveled Round Mounting Plate, 4" and 6" projection - FM118441/



Mount/Elbow

Mount/Elbow



use French Return Bands to hide sidelight:

Use optional french return bands to secure drapery panels for minimal light gap and to cover pole seams. Each French Return Elbow includes one splice for attachment with a 1 1/8" pole to fit your custom window.

French Return Band - FM118449/



pair with our coordinating rings:

All rings include plastic inserts for smoother gliding & clips.

Ring with Eyelet - FM200/

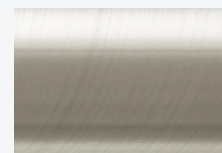
C-Ring with Eyelet - FM202/

Square Ring with Eyelet - FM204/

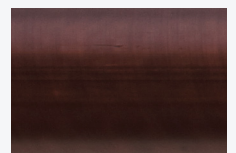
*Available in SG, BZ and MK.



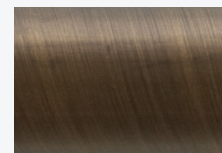
French Return finishes:



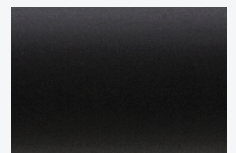
Brushed Nickel - BN



Oil Rubbed Bronze - ORB



Brushed Bronze - BZ



Matte Black - MK

fixed poles and splice:

All French Returns include splice. Fixed poles sold separately.

4' Fixed - FM284/

6' Fixed - FM286/

8' Fixed - FM288/

Splice - FM403

