

Flat Back Hobbled Roman Shade Using an EZ Rise Cordless Roman Spring System



Utilize the EZ Rise Roman Shade headrail system to create a safe window treatment, Certified Best for Kids™.



Materials & Supplies

Rowley Products

Item

Sure-Shade™ Encased Lift Cord:

- Shroud Tube

[ELK9/](#)

Plastic Sew-On Rings

[ST15/W](#)

Cord Adjuster Orb

[RW19](#)

EZ Rise Cordless Roman Spring Shade Starter Kit:

- with Encased Lift Cord

[ERKK](#)

- with Lift Band

[ERLK](#)

Wood Tassel for Center Pull Cord

[CT39/](#)

Weight Bar

[BR6/](#)

Whyte & Ivory Lining

[Linings](#)

Flat Back Hobbled Roman Shade: Step-By-Step Instructions

Cut the Fabric:

This type of Roman shade has fabric folds along the front and the lining is flat on the back.

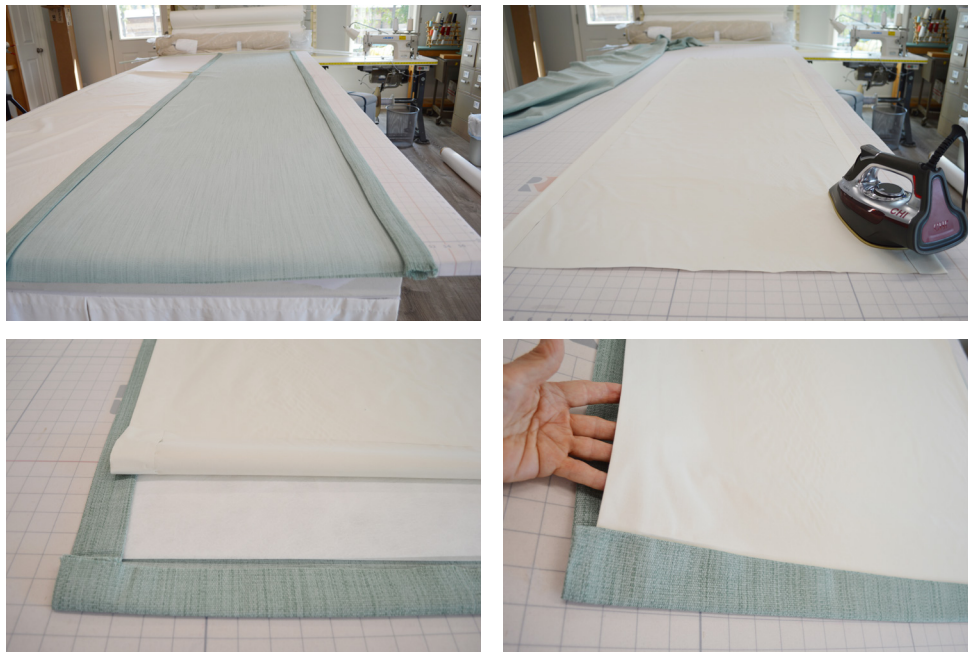
- 1 Cut the face fabric the shade finished width plus the side hem allowances. For this project, the side hems are double 2" hems.
- 2 Cut the face fabric two times the finished shade length plus 20".
- 3 Cut the lining the shade finished width minus 2" plus two side hem allowances. For this project, the lining side hems were double 1 ½" hems.



Prepare the Face Fabric & Lining:

- 1 Press the side hems of the face fabric.
- 2 Cut a piece of Skirtex 10" x the finished width of the shade minus 1". Fold in half, matching the long edges, and press a crease along one long edge.
- 3 Place the Skirtex on the face fabric just above the hem, tucking the edges into the face fabric side hems.
- 4 Close the side hems in your method of choice.
- 5 Press the lining side hems and close in your method of choice.
- 6 Fold and press the bottom hem of the face fabric.
- 7 Center the lining, wrong side down on the face fabric, placing the bottom of the lining inside the face fabric hem.
- 8 Close the bottom hem in your method of choice.

NOTE: The face fabric and lining sides are separate at this point.



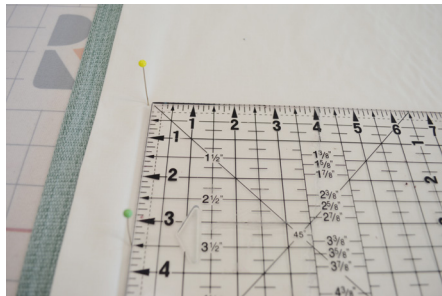
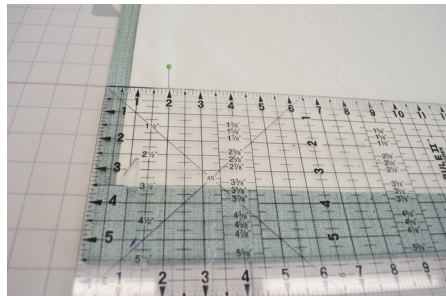
Prepare the Back of the Shade:

- 1 Determine the horizontal spacing for the shroud tube placement. The outer most placement is 2" from the sides of the shade.
- 2 This shade must have a center cord to release the EZ Rise spring.
- 3 The first three vertical tack points from the bottom of the shade will be stitched together through the lining and face fabric.

4

Working from the bottom of the shade, mark for the first three tack points.

- The first tack point will be 5 ½" above the bottom hem.
- The second will be 3 ½" above the first tack point. This is where the weight bar will be inserted.
- The third tack point will be 8" above the 3 ½" tack point.
- Fold and stitch these three marks together and sew a ring at each placement.
- Cut shroud tube long enough for the shade plus enough to wrap around the tube 3 times when the shade is in the lowest position.
- Attach the bottom of the shroud tube behind the ring at each tack point.
- Pull some of the shade cord out of the shroud tube and through the ring.
- Place the cord through an orb to secure the shade cord.



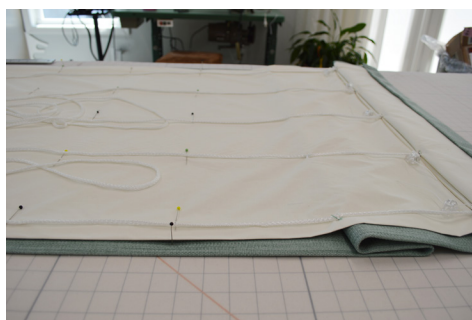
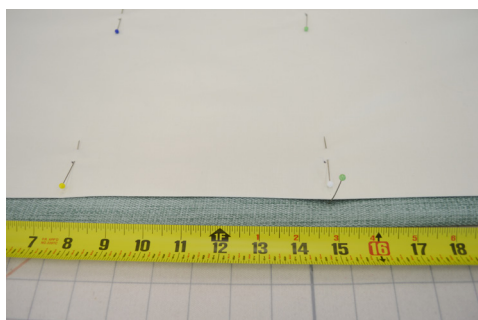
5

Determine the vertical spacing for the shroud tube tack points.

6

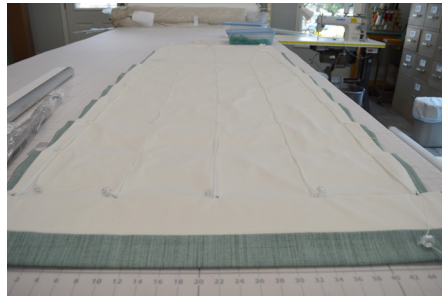
The vertical tack points may be no closer than 8" apart.

- Working with the lining only, mark the placement for the vertical tack points. Pin through the lining only.
- Next, mark for the vertical tack points on the face fabric. For two times fullness on the hobbles, these tack points will be two times the vertical tack points of the lining measurements.
- Starting at the bottom of the shade up, pull the lining tack points to meet the face fabric tack points.
- Smooth the fabric and stitch the shroud tube through the lining and face fabric. You will notice a fold has formed on the front of the shade.
- Repeat this step until all the shade tack points have been stitched between the lining and face fabric.

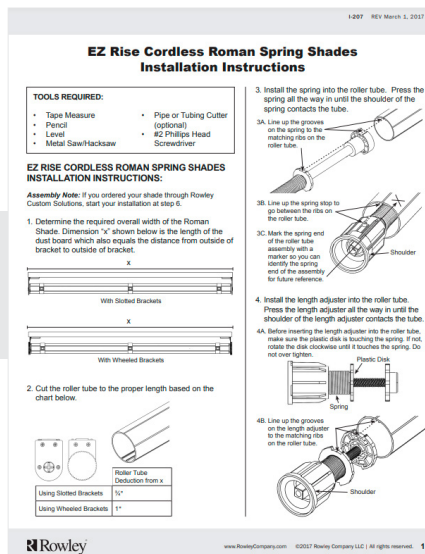


Complete the Shade:

- 1 Pull the shade cord out of the shroud tube or tape just above the last tack point.
- 2 Attach the shade to the shade board.
- 3 Prepare the shade board.
 - Place the shade brackets on the shade board.
 - Insert the EZ Rise Spring into the shade tube.
 - Mark the tube indicating the spring placement.
 - Insert the length adjuster into the other side of the tube.
 - Tie the shade cord to the shade clips.
 - Attach the shade clips to the shade tube, offsetting them from the rows of shroud tube.
 - Pretension the spring prior to inserting the shade tube into the brackets.
 - Finish the bottom of the shade by tying the shade cord to the rings. Do not tie the center cord.
 - Attach the center cord to a tassel to activate the EZ Rise Cordless Spring.



Download the instructions:
bit.ly/EZ-Rise-Roman



Top Tips for Using EZ Rise Spring System:

1. What parts do I need to order if I plan to make this system myself?

- Aluminum Roller [RC60/](#)
- Spring [1 1/2" with Slow Rise Damper](#) - Appropriate for your shade weight and length
- Spring Crank [RSA](#)
- Length Adjuster [RSLA](#)
- Weight Bar [BR6/](#)
- Encased Lift Cord Shroud Tube [ELK9/](#)
- Soft Shade Roller Clips [RWRC112](#)
- Warning Tag [ANS20](#)
- Pair of Brackets Wheeled [RSBE3/](#), [RSBE4/](#); Slotted [RSBE1/](#), [RSBE2/](#)
- EZ Rise Cordless Shade Mount Brackets [RSBM](#)
- Dust Board [FirmaFlex™](#)

2. How do I select which spring I need for my shade?

- The springs have a minimum tube width and maximum shade weight. These are show in the Rowley Catalog and on the Rowley Company website.

3. Does my custom spring system come pre tensioned?

- No.

4. How do I remove the tube/spring to set the tension?

- Remove the screws that attach the shade bracket to the dust board bracket. This will allow you to remove the tube from the brackets for spring tensioning.

5. Can I over tension the spring and what happens if I do?

- Too much tension on the spring may cause the shade to raise too quickly.

6. What does standard mount mean?

- The lift cords off the back of the roller tube assembly.
- NOTE: On the standard mount the spring should be located on the left side of the roller tube assembly.

7. What is a waterfall mount?

- Front or Waterfall mount the lift cords come off the front of the roller tube assembly.
- NOTE: On the front or waterfall mount the spring should be located on the right side of the roller tube assembly.

8. Why do I have to have three turns of lift cord on my shade when it's fully extended?

- This will allow the locking mechanism in the spring to release and raise the shade.

9. What is the purpose of adding a cord tassel on the center cord in step 7A?

- The cord tassel acts as a pull handle to allow the spring to turn ¼ turn, releasing the spring so the shade will rise.

10. What is the purpose of the length adjuster?

- This allows the adjust the stopping location of your shade after it has been installed.

11. My shade won't pull down, what is wrong?

- Check that the spring is on the correct side for the mount method of your cords.
- Check that you have the proper tension on the spring.
- Check that the shade clips are correctly positioned on the shade tube.
- Check that your brackets are correctly installed.

