

 ROOMSCAPES

# How-To Guide

MID-CENTURY MODERN DINING

## TABLE RUNNER

TABLE RUNNER WITH GEOMETRIC DETAILS





ROWLEY PRODUCTS	ITEM #
Glass Head Straight Pins	<u>TP49</u>
Gutermann Polyester Thread	<u>TG1M</u>
Professional Sheers	<u>CU22</u>
Thread clipper	<u>WW20</u>

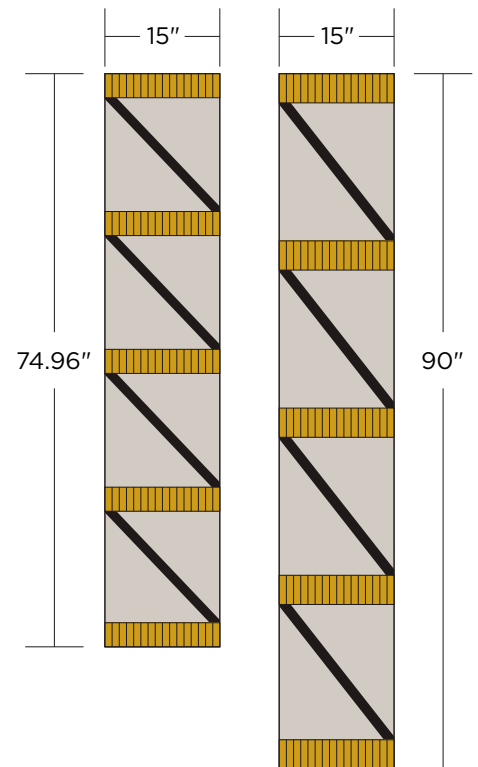
- Determine table runner size. Cut fabric for table runner front and back.
- Add a SA (seam allowance) to all four sides. For this project, a 1/2" SA is used.



TABLE RUNNER FACE FABRIC



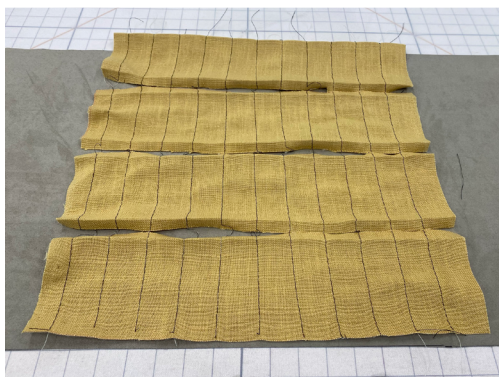
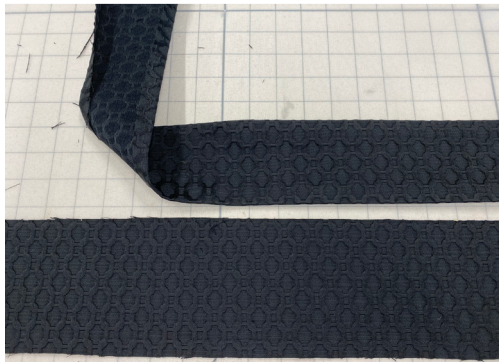
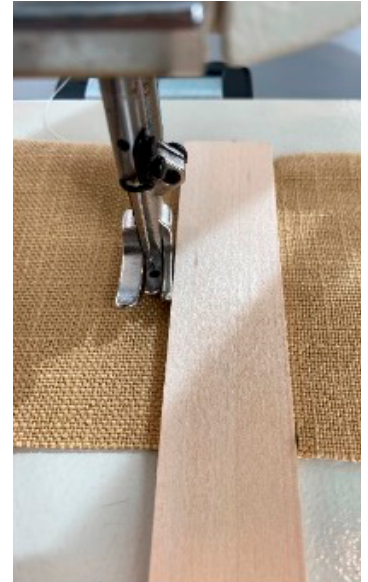
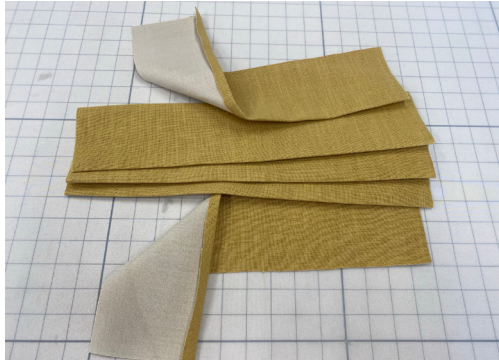
TABLE RUNNER REVERSE FABRIC



CREATING A SCALED RENDERING IS USED FOR A VISUAL REPRESENTATION AS WELL AS DETERMINING CUT SIZES FOR THE FABRIC AND THE BANDS.

# Prepare the contrast bands

- 1 Cut the fabric for the horizontal bands for the table runner.
- 2 Press under  $\frac{1}{2}$ ", towards the back side of the fabric, along each long edge for three of the horizontal bands. Two bands only need one long edge pressed towards the back of the fabric.
- 3 Cut the fabric for the diagonal bands for the table runner.
- 4 Press under  $\frac{1}{2}$ " towards the back of the fabric along each long edge of the diagonal bands.
- 5 If desired, add topstitching detail to the horizontal bands — but first unfold the bands allowing you to stitch all the way across the bands.





# Add the contrast bands. Add top stitching if desired.

- 1 Place the diagonal bands on the background fabric. Pin in place.
- 2 Place the horizontal bands on the background fabric. Pin in place.
- 3 If desired, mark for topstitching, starting and stopping just under the placement of the contrast bands.
- 4 Sew topstitching to table runner top fabric if using.
- 5 Topstitch diagonal bands.
- 6 Top stitch horizontal bands.





# Complete the table runner

1 Place table runner back fabric and table runner top, right sides together. Pin. Stitch around all four sides, leaving a hole for turning.

2 Turn right sides out. Press. Close hole to complete your project.

