

 ROOMSCAPES

# How-To Guide

MID-CENTURY MODERN DINING

## CUSTOM REVERSIBLE CHAIR CUSHIONS





ROWLEY PRODUCTS	ITEM #
Polyester Upholstery Batting	<u>PA50</u>
Medium Welt Cord	<u>WC10</u>
Glass Head Straight Pins	<u>TP49</u>
Worktable Padding	<u>TC10</u>
Pattern Making Paper	<u>DYC18</u>

1 Cut top and bottom fabric according to the chair template. Add a larger SA (seam allowance) to accommodate for the quilting take up. For this project a 1" SA was added.

2 Cut batting the size of the template without a SA.

3 Cut lining the same size as the cushion fabric.

4 Layer fabric, batting, lining and pin all layers together.

5 Stack all layers together as you quilt your desired quilting pattern. There is no right or wrong.



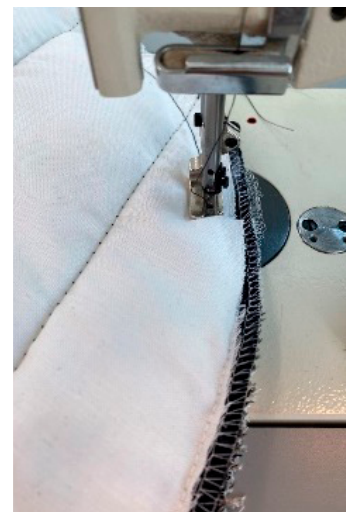
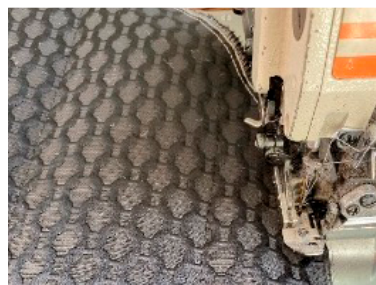
## Sew cushion top and bottom together

1 Check the size of the quilted pieces against the cushion template.

2 For a clean edge, serge all the way around the cushion sections.

3 Pin the cushion top and bottom together, stitch. Leave a hole for turning. Clip curves where necessary.

4 Turn the cushion right sides out. Press.



# Complete the cushion

1 For a cushion with more loft, insert a  $\frac{1}{2}$ " to 1" piece of foam. Or if you have any workable padding TC10 remnants, insert a layer into the cushion.

2 Close the hole in your method of choice. Here, Jumbo Wonder Clips were used to hold the layers of fabric together as the hole was hand stitched.

3 As an alternative to welt cord, a top stitch was added  $\frac{1}{2}$ " away from the edge of the cushion.

