

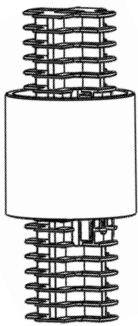
Aria® Metal Hardware

Atelier Mix & Match Finials Installation Instructions

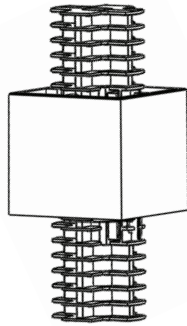
Finials - 1 1/8"

Thank you for purchasing your new decorative mix & match finials. With proper installation and care, they will provide you with many years of beauty and trouble-free use. Clean with a soft cloth. Do not use harsh or abrasive cleaning supplies or polishes which may damage the finish.

Components included for Mix & Match Finial Bases:



Cylinder Metal Base
FM6081/

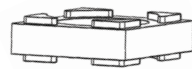


Cube Metal Base
FM6091/

Components sold separately for Mix & Match Finials:



Cylinder Metal or
Shagreen Band
FM6082/

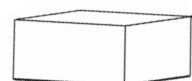


Cube Metal or
Shagreen Band
FM6092/

NOTE: The metal or shagreen band is designed to lock in place when installed. Removing the metal or shagreen band is not recommended.



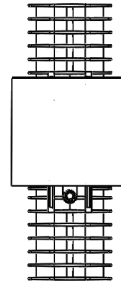
Cylinder Metal Cap
FM6083/



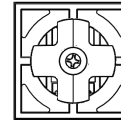
Cube Metal Cap
FM6093/

Mix & Match Component Installation

1. Locate the base.

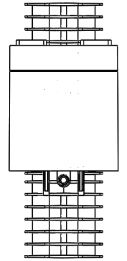
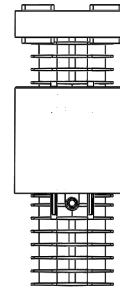
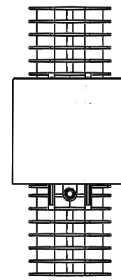


2. Rotate the base to the open end.



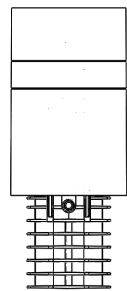
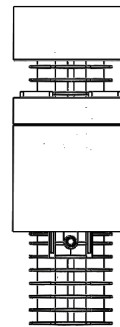
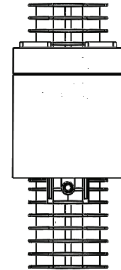
3. Assemble the metal or shagreen band by pushing it over the plastic plug.

NOTE: The metal or shagreen band is designed to lock in place when installed. Removing the metal or shagreen band is not recommended.



4. Assemble the metal cap by pushing it over the plastic plug.

NOTE: Removing the metal cap after installation is not recommended.



5. To complete your finial assembly, firmly press all parts together.

